



Caro Point, 5 Gatliff Road
London SW1W

GARTON JONES.COM



Caro Point, 5 Gatliff Road London, SW1W

£725 Per Week

GARTON JONES.COM

8 Gatliff Road
Grosvenor
Waterside
Chelsea
London
SW1W 8DP

Lettings:
+44 (0) 20 7730 5007
gws@gartonjones.com
www.gartonjones.com

A ONE DOUBLE BEDROOM apartment to rent of approx. 518sq.ft (48.08sq.m) in Caro Point, part of the popular Grosvenor Waterside development in Chelsea that surrounds the historic Grosvenor Dock. This FURNISHED apartment benefits from an open plan reception room with full width floor to ceiling windows. There is an integrated kitchen, double bedroom with built in wardrobes and wood flooring and there is a utility cupboard/storage housing washing machine. 24 HOUR CONCIERGE, GYM and SPA. On-site Sainsbury's Local, coffee shop and private kids club. SLOANE SQUARE and VICTORIA station with Gatwick Express are within walking distance. Battersea Park is also just a short stroll away across Chelsea Bridge.

Available via Garton Jones' on-site office at Grosvenor Waterside (underneath Bramah House).

Please note furniture may differ to that shown in the current photos.

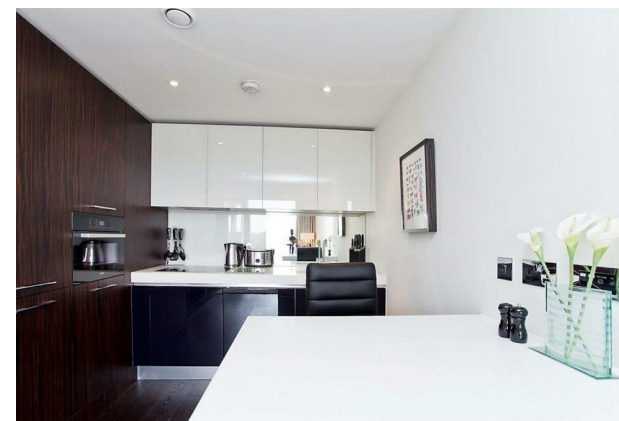
EPC Rating: B (81)

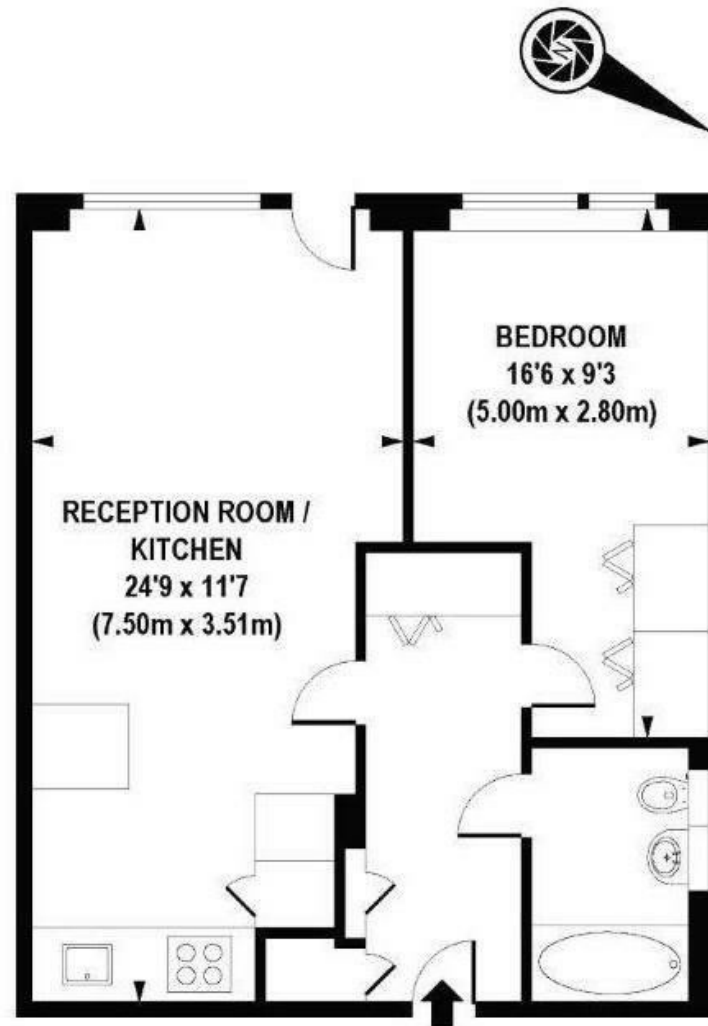
Council Tax: Westminster Council (band E).

12 month minimum term. 5 week deposit required.

To check broadband and mobile phone coverage, please visit Ofcom: ofcom.org.uk/phones-telecoms-and-internet/advice-for-consumers/advice/ofcom-checker

- 518 Sq.ft (48.08 Sq.m)
- 2 Double Bedrooms
- Open Plan Reception Room
- Modern Integrated Kitchen
- Luxurious Bathroom
- 24 Hour Concierge
- Private Balcony
- Residents Leisure Suite with Gym & Spa Facilities
- On-Site Sainsbury's, Creche, Coffee Shop & Purple Dragon Private Kids Club
- Walking Distance to Sloane Square & Victoria Station





APPROX. GROSS INTERNAL FLOOR AREA 518 sq. ft / 48.08 sq. m

