



Moore House, 2 Gatliff Road
London SW1W

GARTONJONES.COM



Moore House, 2 Gatliff Road London, SW1W

£692 Per Week

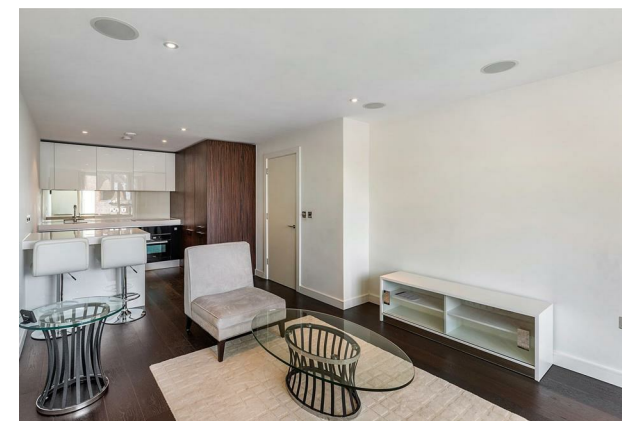
GARTON JONES.COM

8 Gatliff Road
Grosvenor
Waterside
Chelsea
London
SW1W 8DP

Lettings:
+44 (0) 20 7730 5007
gws@gartonjones.com
www.gartonjones.com

A one bedroom apartment to rent of approx. 606ft (56.3sq.m) in Moore House, Grosvenor Waterside development, located close to the banks of the River Thames by Chelsea Bridge. The apartment is FURNISHED with option to UNFURNISH and benefits from an open plan reception room, kitchen with Miele integrated appliances including a wine cooler. There is wood flooring, modern bathroom, good storage including a utility cupboard housing a washer dryer and built in wardrobes to the master bedroom. Parking available by separate negotiation. Residents have the use of 24-HOUR CONCIERGE, GYM & SPA. On-site Sainsbury's Local, coffee shop and private kids club. SLOANE SQUARE & VICTORIA station with Gatwick Express are within walking distance.

- 606 Sq.ft (56.3 Sq.m)
- 1 Double Bedroom
- Luxury Bathroom Suite
- Dual Aspect Open Plan Reception Room
- Kitchen with Miele Integrated Appliances
- 24 Hour Concierge
- Parking Available By Separate Negotiation
- Residents Gym with Spa Facilities
- On-Site Sainsbury's, Coffee Shop & Bakery, Purple Dragon Private Kids Club & Crèche
- Walking Distance to Sloane Square & Victoria Station



Available via Garton Jones on-site office at Grosvenor Waterside (underneath Bramah House).

Council Tax: Westminster City Council (band E).

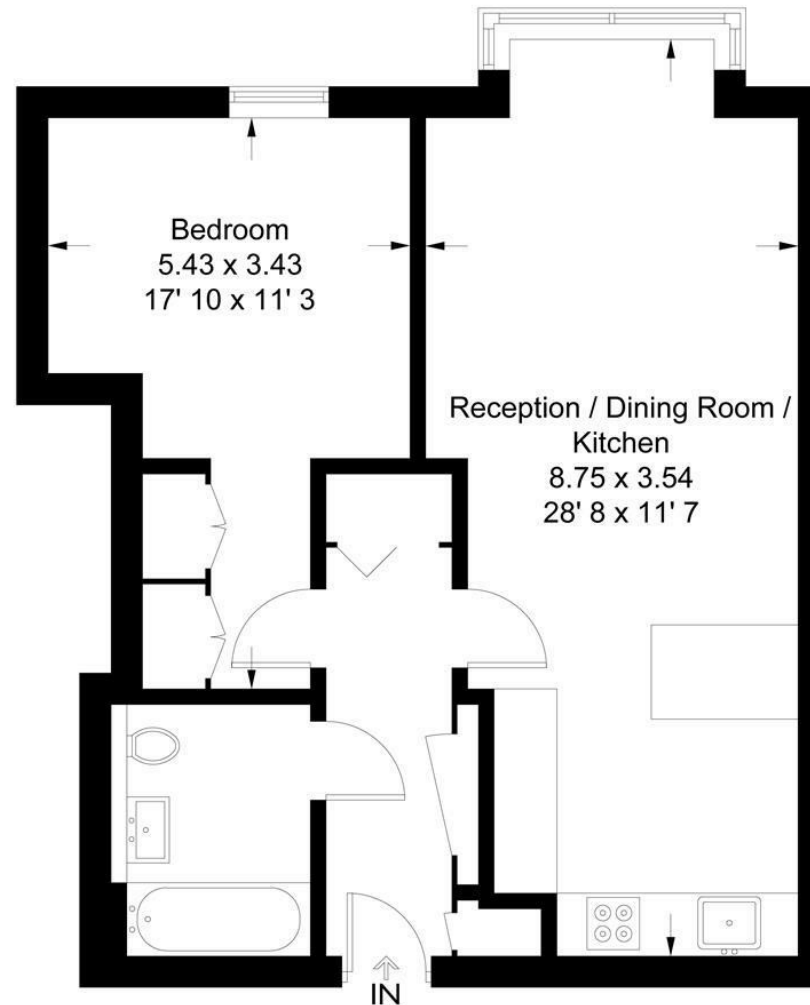
12 month minimum term. 5 week deposit required.

EPC Rating: B (82)

To check broadband and mobile phone coverage, please visit Ofcom: [ofcom.org.uk/phones-telecoms-and-internet/advice-for-consumers/advice/ofcom-checker](https://www.ofcom.gov.uk/phones-telecoms-and-internet/advice-for-consumers/advice/ofcom-checker)

Moore House

Approximate Gross Internal Area = 606 sq ft / 56.3 sq m



Not to scale, for guidance only and must not be relied upon as a statement of fact
All measurements and areas are approximate only and have been prepared in
accordance with the current edition of the RICS Code of Measuring Practice

