



Cubitt Building, 10 Gatliff Road
London SW1W

GARTON JONES.COM



Cubitt Building, 10 Gatliff Road London, SW1W

£775 Per Week

GARTON JONES.COM

8 Gatliff Road
Grosvenor
Waterside
Chelsea
London
SW1W 8DP

Sales +44 (0) 20 7730 5007
gws@gartonjones.com
www.gartonjones.com

A bright and spacious ONE DOUBLE BEDROOM apartment to rent of approx. 578 sq.ft (54sq.m) on Grosvenor Waterside, located close to the banks of the River Thames by Chelsea Bridge. This well-presented apartment has an open plan reception room with integrated kitchen and access to a private balcony with views of the dock and partial view of the river. There is a dressing area to the bedroom and wood flooring. Residents have the use of 24-HOUR CONCIERGE, GYM & SPA. On-site Sainsbury's Local, coffee shop and private kids club. SLOANE SQUARE & VICTORIA station with Gatwick Express trains are within walking distance. Battersea Park is also a short stroll away over Chelsea Bridge.

Please note the internal photographs are of an apartment on a lower floor (same layout).

Available via Garton Jones' on-site office at Grosvenor Waterside (underneath Bramah House).

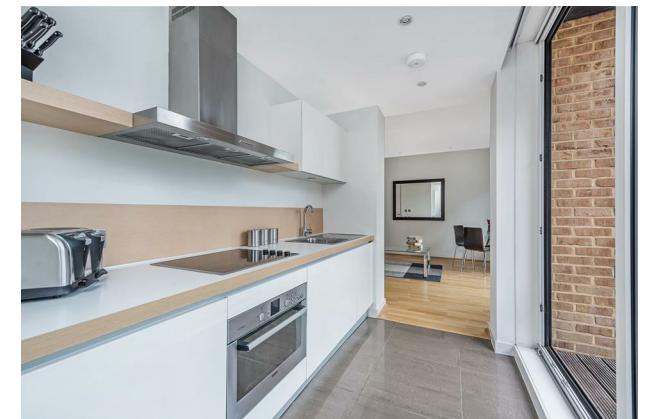
EPC Rating: C (73)

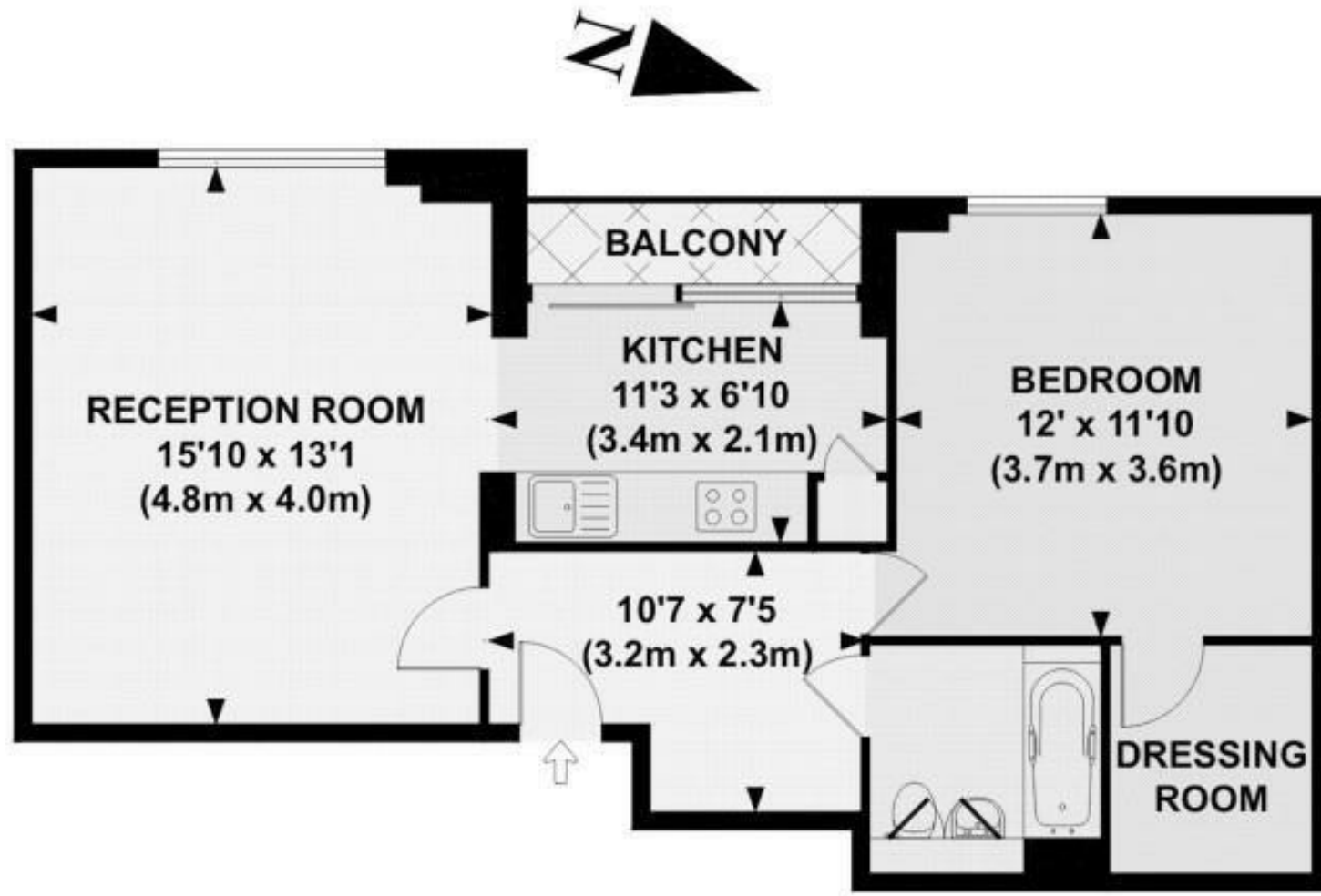
Council Tax: Westminster Council (band E)

To check broadband and mobile phone coverage, please visit Ofcom: [ofcom.org.uk/phones-telecoms-and-internet/advice-for-consumers/advice/ofcom-checker](https://www.ofcom.gov.uk/phones-telecoms-and-internet/advice-for-consumers/advice/ofcom-checker)

EPC certificate available on request.

- 578 Sq.ft (54 Sq.m)
- 1 Bedroom Apartment
- Open Plan Reception Room
- Kitchen With Integrated Appliances
- Modern Bathroom
- Private Balcony Facing The Historic Grosvenor Dock
- Dressing Area To The Bedroom
- 24 Hour Concierge Service
- On-Site Sainsbury's Local, Coffee Shop, Purple Dragon Private Kids' Club & Creche
- Close To Victoria Train Station & Sloane Square





APPROX. GROSS INTERNAL FLOOR AREA 578 SQ FT / 54 SQ M

