



Cubitt Building, 10 Gatliff Road
London SW1W

GARTON JONES.COM



Cubitt Building, 10 Gatliff Road London, SW1W

£675 Per Week

An very well-proportioned 1 DOUBLE BEDROOM apartment of approx. 678 sq.ft (63 sq.m) in Cubitt Building, one of the buildings forming the popular Grosvenor Waterside development that surrounds the historic Grosvenor Dock. This FURNISHED apartment overlooks the dock and further benefits from floor to ceiling windows, an open plan reception room, a smart fitted kitchen (with a worktop mounted dishwasher), 2 spacious balconies, a utility cupboard and wood flooring. 24 HOUR CONCIERGE, GYM & SPA. On-site Sainsbury's Local, coffee shop and private kids club. SLOANE SQUARE & VICTORIA station with Gatwick Express are within walking distance. Battersea Park is also just a short stroll away across Chelsea Bridge.

Available via Garton Jones' on-site office (underneath Bramah House).

Council Tax: Westminster Council (band E)

12 month minimum term. 5 week deposit.

EPC Rating: B (81)

Please note that furniture may differ to that shown in the current photos.

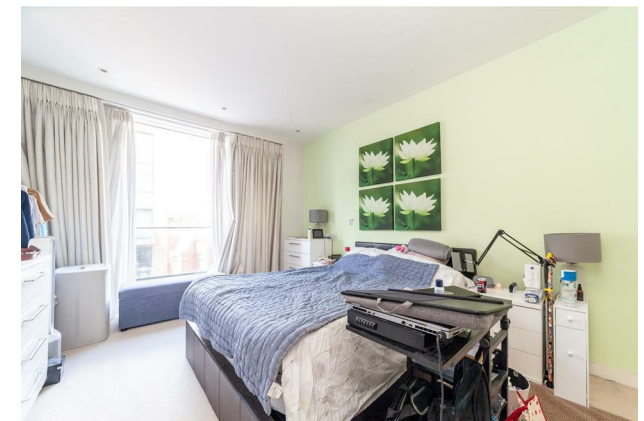
EPC certificate available on request.

GARTON JONES.COM

8 Gatliff Road
Grosvenor
Waterside
Chelsea
London
SW1W 8DP

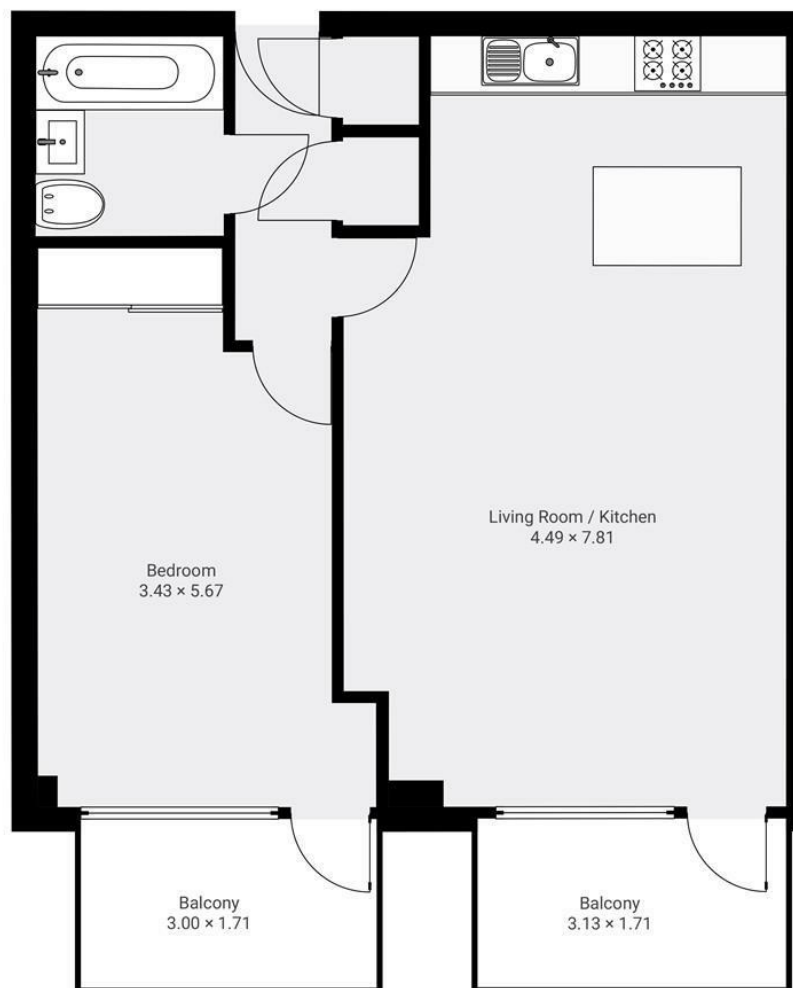
Sales +44 (0) 20 7730 5007
gws@gartonjones.com
www.gartonjones.com

- 678 Sq.ft (63 Sq.m)
- 1 Double Bedroom Apartment
- Open Plan Reception Room
- Kitchen With Integrated Appliances
- Bathroom Suite
- 24 Hour Concierge Service
- 2 Dock Facing Balconies
- On-Site Residents' Gym & Spa Facilities
- On-Site Sainsbury's, Coffee Shop, Crèche & Purple Dragon Private Kids Club
- Within Walking Distance Of Sloane Square & Victoria Station



Cubitt Building, 10 Gatliff Rd, SW1W, London
TOTAL AREA: 63 m² - 678 ft²

▼ 5th Floor



All measurements are approximate and for display purposes only

