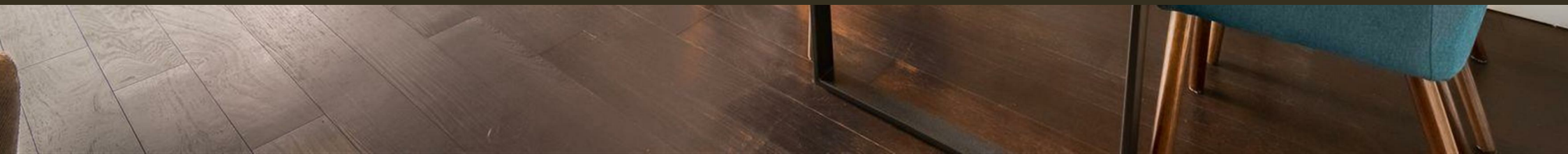




Bramah House, 9 Gatliff Road
London SW1W

GARTON JONES.COM



Bramah House, 9 Gatliff Road London, SW1W

£1,000 Per Week

GARTON JONES.COM

8 Gatliff Road
Grosvenor
Waterside
Chelsea
London
SW1W 8DP

Sales +44 (0) 20 7730 5007
gws@gartonjones.com
www.gartonjones.com

A TWO DOUBLE BEDROOM apartment to rent of approx. 828 sq.ft (76.9 sq.m) in Bramah House, part of the popular Grosvenor Waterside development that surrounds the historic Grosvenor Dock. This FURNISHED apartment has an open plan reception room with a modern kitchen with a breakfast bar and integrated appliances including a wine cooler. There is dark wood flooring, a full width PRIVATE TERRACE with DOCK VIEWS as well as partial views of the River Thames and Chelsea Bridge. There are 2 bathrooms (1 en-suite) and good storage including a utility cupboard housing a washing machine. Sloane Square & Victoria Station with Gatwick Express are within walking distance. Battersea Park is also a short stroll away via Chelsea Bridge.

Available via Garton Jones' on-site office at Grosvenor Waterside (underneath Bramah House).

*Please note furniture may differ to that shown in the current photos.

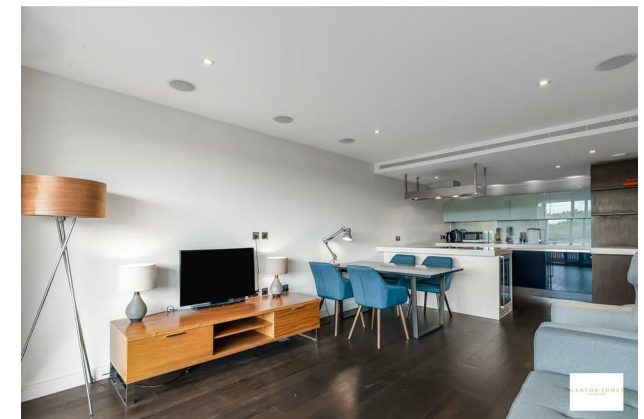
Council Tax: Westminster Council (band F).

EPC Rating: B (85)

12 month minimum term. 6 week deposit required.

To check broadband and mobile phone coverage, please visit Ofcom: [ofcom.org.uk/phones-telecoms-and-internet/advice-for-consumers/advice/ofcom-checker](https://www.ofcom.gov.uk/phones-telecoms-and-internet/advice-for-consumers/advice/ofcom-checker)

- 828 Sq.ft (76.9 Sq.m)
- 2 Double Bedroom Apartment
- Open Plan Reception Room
- Modern Kitchen With Breakfast Bar, Wine Cooler & Integrated Appliances
- 2 Bathrooms (1 En-Suite)
- Private Terrace Facing The Historic Grosvenor Dock & Partial Views Of The River Thames
- Air Conditioning
- 24 Hour Concierge Service
- On-Site Residents' Gym & Spa Facilities
- Within Walking Distance Of Sloane Square & Victoria Station



EPC certificate available on request.

Bramah House

Approximate Gross Internal Area = 822 sq ft / 76.3 sq m

