



Consort Rise House, Belgravia
London SW1W

GARTON JONES.COM



Consort Rise House, Belgravia London, SW1W

£825 Per Week

GARTON JONES.COM

8 Gatliff Road
Grosvenor
Waterside
Chelsea
London
SW1W 8DP

Sales +44 (0) 20 7730 5007
gws@gartonjones.com
www.gartonjones.com

A spacious 2 DOUBLE BEDROOM furnished apartment to rent of approx. 893 sq.ft (83 sq.m) in Consort Rise House, a secure development on Buckingham Palace Road. The accommodation comprised of a bright living room with dining area, fitted kitchen, good storage including fitted wardrobes to both bedrooms. There is air conditioning, wooden floors and UNDERGROUND PARKING, 24 HOUR CONCEIRGE & GYM. Consort Rise is a Short walk from Victoria train station with link to the Gatwick Express and Sloane Square and Kings Road are within easy reach with many shops, boutiques, galleries and restaurants on Pimlico Road too.

Available via our on-site office at Grosvenor Waterside (underneath Bramah House), approx. a 2 minute walk from the apartment.

EPC Rating: B (81)

5 week deposit required. 12 month minimum term.

To check broadband and mobile phone coverage, please visit Ofcom: ofcom.org.uk/phones-telecoms-and-internet/advice-for-consumers/advice/ofcom-checker

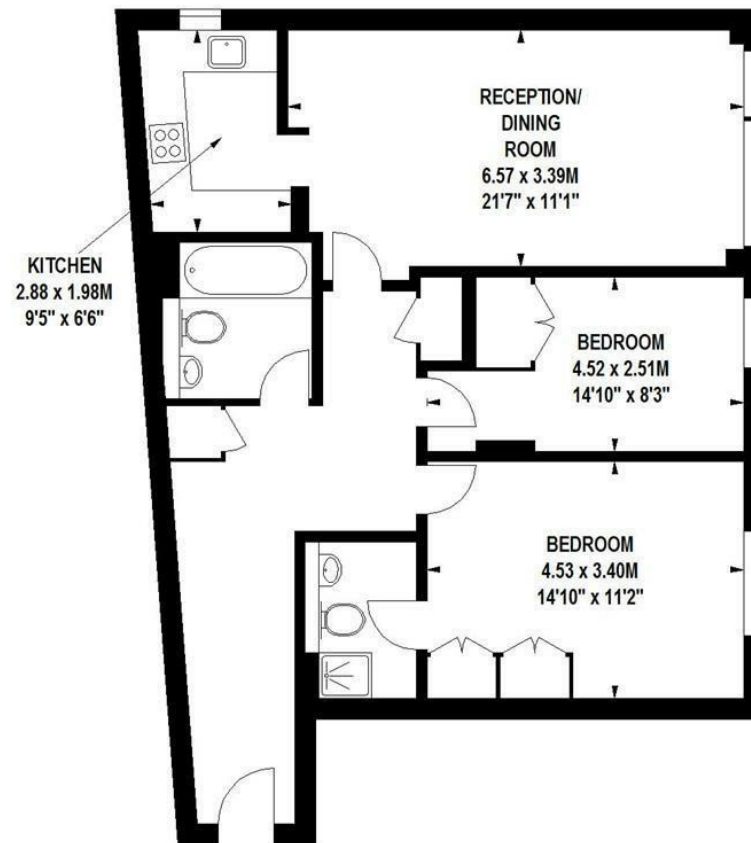
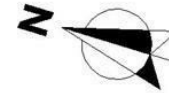
- 893 Sq.ft (83 Sq.m)
- 2 Double Bedrooms
- Bright Living Room & Dining Area
- Fitted Kitchen
- Bathroom & Separate Shower Room
- 24 Hour Concierge
- Secure Underground Parking
- On-Site Resident's Gym
- Air Conditioning
- Close to Victoria Station, Sloane Square & King's Road



EPC certificate available on request.

Consort Rise, SW1

Approximate gross internal area
83 sq m / 893 sq ft



Floor Plan produced for Andrew Reeves by Mays Floorplans © . Tel 020 3397 4594

Illustration for identification purposes only, not to scale

All measurements are maximum, and include wardrobes and window bays where applicable

