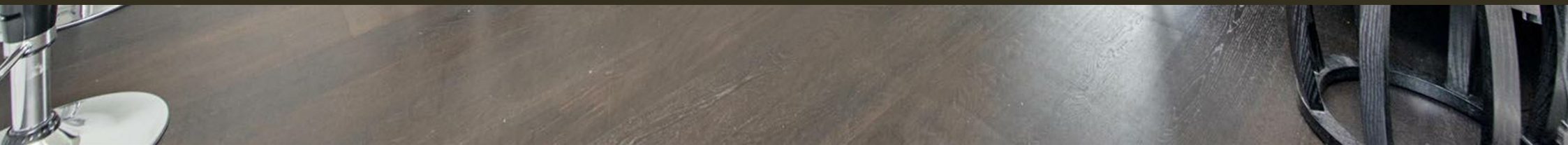




Moore House, 2 Gatliff Road  
London SW1W

GARTONJONES.COM



# Moore House, 2 Gatliff Road London, SW1W

## £1,153 Per Week

GARTON JONES.COM

8 Gatliff Road  
Grosvenor  
Waterside  
Chelsea  
London  
SW1W 8DP

Lettings:  
+44 (0) 20 7730 5007  
gws@gartonjones.com  
www.gartonjones.com

IMMEDIATELY AVAILABLE. A TWO BEDROOM apartment to rent of approx. 873sq.ft (80.1sq.m) in Moore House, part of the popular Grosvenor Waterside development. This beautifully FURNISHED apartment (with option to un-furnish) benefits from an open plan reception room, a smart kitchen with Miele integrated appliances (including a wine cooler), wood flooring, comfort cooling, en-suite bathroom plus separate shower room, good storage including a utility cupboard housing a washer dryer and built in wardrobes to the master bedroom. There is on-site UNDERGROUND PARKING. 24 HOUR CONCIERGE, GYM & SPA. On-site Sainsbury's Local, coffee shop and private kids club. SLOANE SQUARE & VICTORIA station with Gatwick Express are within walking distance.

- 873 Sq.ft (80.1. Sq.m)
- 2 Double Bedrooms
- Dual Aspect Open Plan Reception Room
- Kitchen with Miele Integrated Appliances
- 2 Bathrooms (1 En-Suite)
- 24 Hour Concierge
- Secure Underground Parking
- Residents Gym with Spa Facilities
- On-Site Sainsbury's, Coffee Shop & Bakery, Purple Dragon Private Kids Club & Crèche
- Walking Distance to Sloane Square & Victoria Station



Available via Garton Jones' on-site office at Grosvenor Waterside (underneath Bramah House).

Please note the furniture may differ or not be included to that shown in current photos.

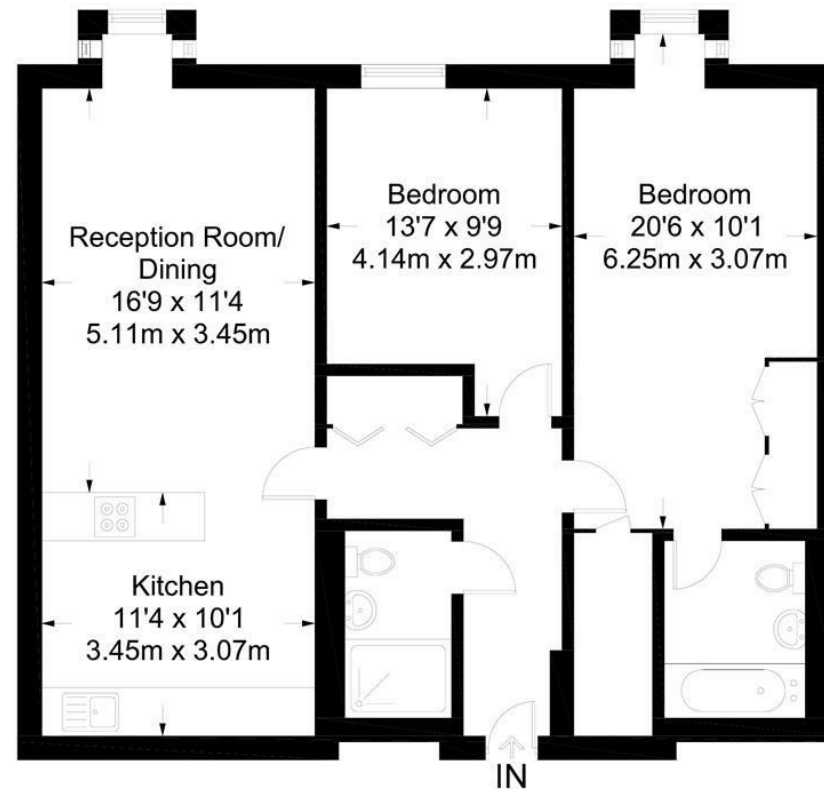
Westminster City Council (band F)

12 month minimum term. 6 week deposit required.

To check broadband and mobile phone coverage, please visit Ofcom: [ofcom.org.uk/phones-telecoms-and-internet/advice-for-consumers/advice/ofcom-checker](https://www.ofcom.gov.uk/phones-telecoms-and-internet/advice-for-consumers/advice/ofcom-checker)

## Moore House

Approximate Gross Internal Area = 868 sq ft / 80.6 sq m



Not to scale, for guidance only and must not be relied upon as a statement of fact.  
All measurements and areas are approximate only and have been prepared in  
accordance with the current edition of the RICS Code of Measuring Practice.

