



Cubitt Building, 10 Gatliff Road
London SW1W

GARTON JONES.COM



Cubitt Building, 10 Gatliff Road London, SW1W

GARTON JONES.COM

8 Gatliff Road
Grosvenor
Waterside
Chelsea
London
SW1W 8DP

Sales +44 (0) 20 7730 5007
gws@gartonjones.com
www.gartonjones.com

£750,000 Leasehold

A beautifully presented ONE DOUBLE bedroom apartment FOR SALE of approx. 577sq.ft (54 sq.m) in Cubitt Building, Grosvenor Waterside, close to Chelsea Bridge. There is an open plan reception room with integrated kitchen, wood flooring and modern bathroom. 24 HOUR CONCIERGE, GYM & SPA. On-site Sainsbury's Local, coffee shop and private kids club. SLOANE SQUARE & VICTORIA station with Gatwick Express are within walking distance. Battersea Park is also just a short stroll away across Chelsea Bridge.

Available via Garton Jones on-site office at Grosvenor Waterside (underneath Bramah House).

Council Tax: Westminster Council (band E).

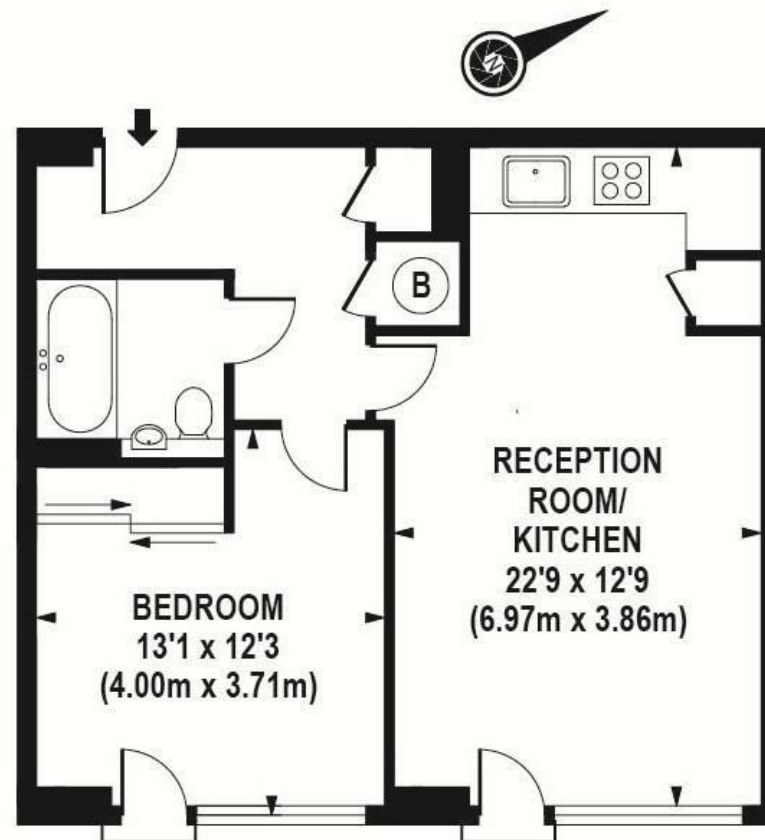
Ground Rent: approx. £1,050.00 per annum
Service Charges: approx. £4,600.00 per annum
Lease: 999 years from 2003 (approx. 979 years remaining)
EWS1 compliant

EPC Rating: B (84)

EPC certificate available on request.

- 577 Sq.ft (54 Sq.m)
- 1 Bedroom Apartment
- Open Plan Reception Room
- Kitchen With Integrated Appliances
- Bathroom
- 24 Hour Concierge
- On-Site Sainsbury's, Coffee Shop & Bakery, Purple Dragon Private Kids Club & Crèche
- Close To Local Shops & Amenities
- Walking Distance To Sloane Square & Victoria Station





APPROX. GROSS INTERNAL AREA 577 sq.ft / 53.60 sq.m

