



Hepworth Court, 30 Gatliff Road  
London SW1W

GARTON JONES.COM

# Hepworth Court, 30 Gatliff Road London, SW1W

GARTON JONES.COM

8 Gatliff Road  
Grosvenor  
Waterside  
Chelsea  
London  
SW1W 8DP

Sales +44 (0) 20 7730 5007  
gws@gartonjones.com  
www.gartonjones.com

## £945 Per Week

A 2 DOUBLE BEDROOM apartment to rent of approx. 915 sq.ft (85 sq.m). in Hepworth Court, part of the popular Grosvenor Waterside development in Chelsea. This FURNISHED property has an open plan reception with access to PRIVATE BALCONY and integrated kitchen, 2 BATHROOMS (1 en-suite), wood flooring, comfort cooling, SECURE PARKING may be available by separate negotiation. Good storage including built-in wardrobes to the master bedroom. 24 HOUR CONCIERGE, GYM & SPA. On-site Sainsbury's Local, coffee shop and private kids club. SLOANE SQUARE & VICTORIA station with Gatwick Express are within walking distance. Battersea Park is also just a short stroll away via Chelsea Bridge.

Available via Garton Jones' on-site office at Grosvenor Waterside (underneath Bramah House).

\*Please note furniture may differ to that shown in the current photos.

Council Tax: Westminster City Council (band F)

6 week security deposit required. 12 month minimum term.

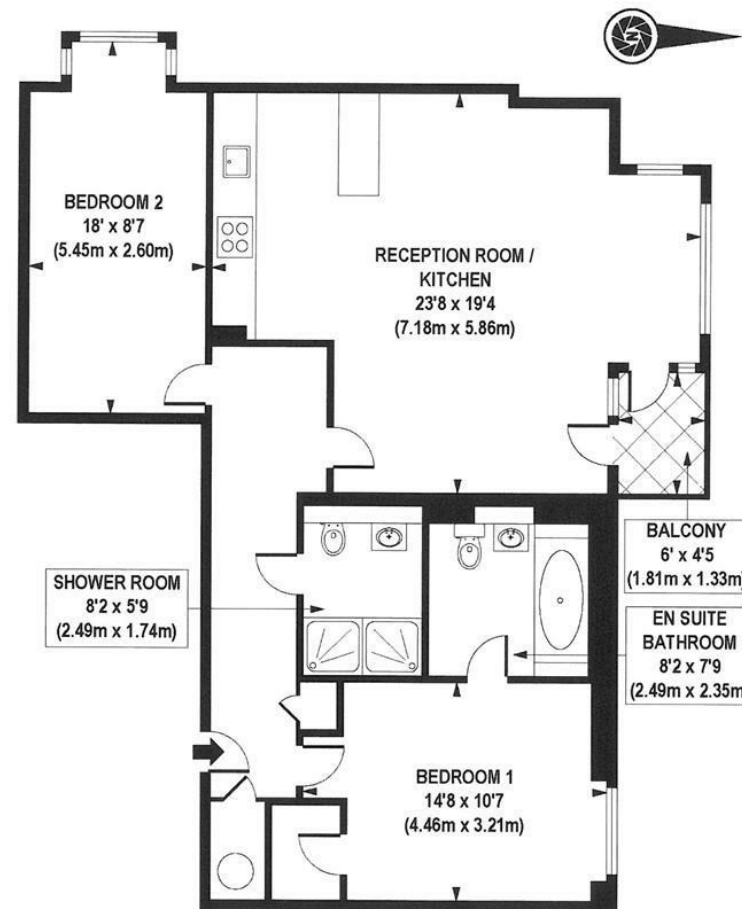
EPC Rating: C (70)

To check broadband and mobile phone coverage, please visit Ofcom: [ofcom.org.uk/phones-telecoms-and-internet/advice-for-consumers/advice/ofcom-checker](http://ofcom.org.uk/phones-telecoms-and-internet/advice-for-consumers/advice/ofcom-checker)

- 915 Sq.ft (85 Sq.m)
- 2 Double Bedrooms
- Open Plan Reception Room
- Modern Integrated Kitchen
- 2 Bathrooms
- 24 Hour Concierge
- Private Balcony
- Residents Leisure Suite With Gym & Spa Facilities
- On-Site Sainsbury's, Private Kids Club And Creche
- Walking Distance To Sloane Square & Victoria Station



EPC certificate available on request.



SECOND FLOOR

APPROXIMATE GROSS INTERNAL AREA 915 sq. ft / 85.06 sq. m



