



Consort Rise House, Belgravia
London SW1W

GARTON JONES.COM



Consort Rise House, Belgravia London, SW1W

£1,269 Per Week

A beautifully presented 3 DOUBLE BEDROOM PENTHOUSE apartment available to rent of approx. 1092 sq.ft (101.5sq.m), situated in this popular development located at the junction of Pimlico Road in Belgravia. The property has been repainted and is available UNFURNISHED with OPTION TO FURNISH by separate negotiation. There are THREE bedrooms and modern bathroom, plus en-suite shower room with walk-in double cubicle. There is an open plan reception room and modern kitchen and the apartment further benefits from a LARGE PRIVATE BALCONY. There wood flooring, comfort cooling, good storage, a utility cupboard housing a washing machine and a separate dryer. SECURE UNDERGROUND PARKING, 24 HOUR CONCEIRGE & GYM.

Victoria Train Station is only a short walk from the property and Sloane Square is also easily accessible. Local amenities including shops and restaurants located in Belgravia and on King's Road are close by.

Available via our office at Grosvenor Waterside (approx. a 2 minute walk from the property).

Please note the furniture shown IS NOT INCLUDED. The property is offered UNFURNISHED (OPTION TO FURNISH by separate negotiation).

Council Tax: Westminster City Council (band H)

12 month minimum term. 6 week deposit required.

EPC Rating: C (69)

- 1092 Sq.ft (101.5 Sq.m)
- 3 Double Bedrooms
- Open Plan Reception Room
- Kitchen With Neff Appliances
- Luxury Bathroom Plus En-Suite Shower Room
- 24 Hour Concierge
- Large Private Terrace
- Secure Underground Parking Space
- Gym With Sauna & Business/Conference Facilities
- Walking Distance To Victoria & Sloane Square Transport Links & Amenities

GARTON JONES.COM

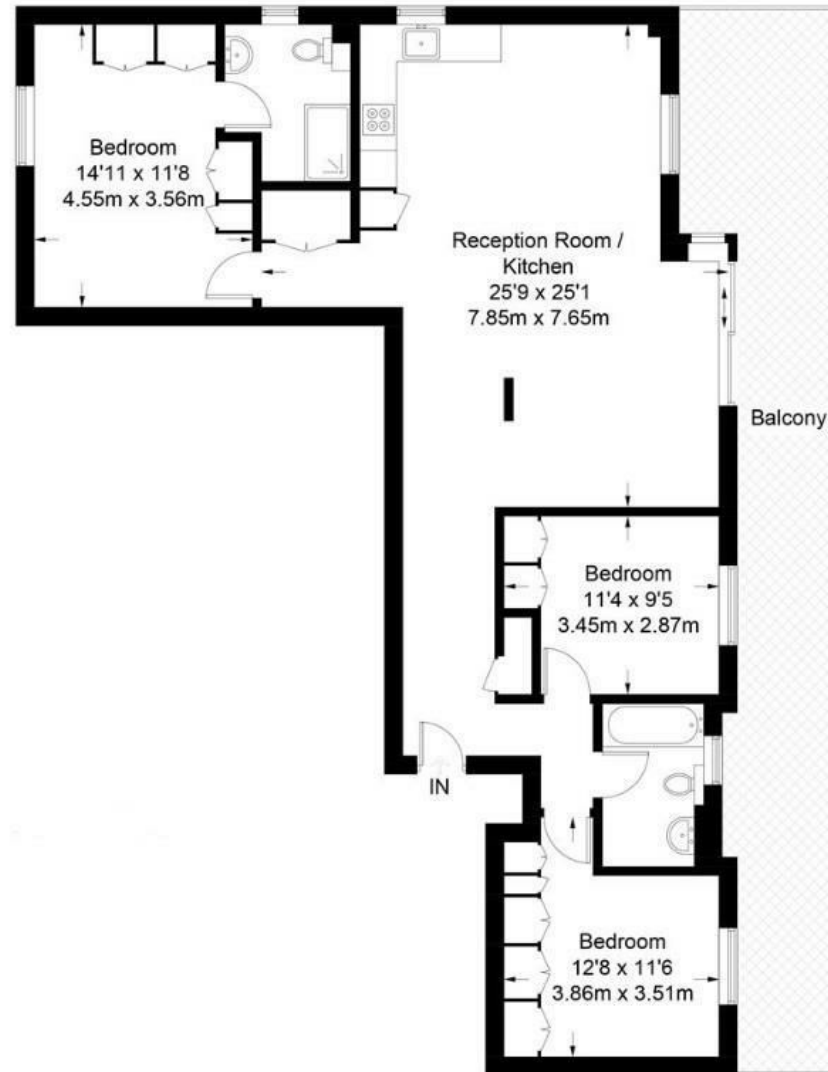
8 Gatliff Road
Grosvenor
Waterside
Chelsea
London
SW1W 8DP

Lettings:
+44 (0) 20 7730 5007
gws@gartonjones.com
www.gartonjones.com



Consort Rise

Approximate Gross Internal Area = 1092 sq ft / 101.5 sq m



Not to scale, for guidance only and must not be relied upon as a statement of fact.
All measurements and areas are approximate only and have been prepared in accordance with the current edition of the RICS Code of Measuring Practice.

