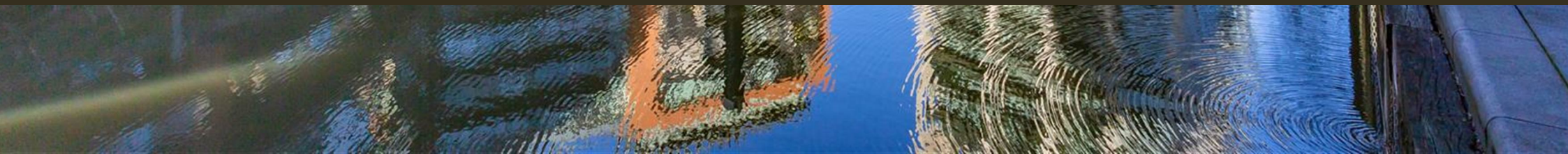




Caro Point, 5 Gatliff Road
London SW1W

GARTON JONES.COM



Caro Point, 5 Gatliff Road
London, SW1W

GARTON JONES.COM

8 Gatliff Road
Grosvenor
Waterside
Chelsea
London
SW1W 8DP

Sales +44 (0) 20 7730 5007
gws@gartonjones.com
www.gartonjones.com

£695,000 Leasehold

One DOUBLE BEDROOM apartment for sale of approx. 541 sq.ft (50 sq.m) on the popular Grosvenor Waterside development in Chelsea. This apartment has an open plan reception room with Juliette balcony. There is a modern kitchen with integrated appliances, a double bedroom, good storage including fitted wardrobes to the bedroom and a utility cupboard housing a washing machine. 24 HOUR CONCIERGE, GYM and SPA. On-site Sainsbury's Local, coffee shop and private kids club. SLOANE SQUARE and VICTORIA station with Gatwick Express are within walking distance.

Available via Garton Jones' on-site office at Grosvenor Waterside (underneath Bramah House).

Service Charges: approx. £2,500.00 per half year TBC
Ground Rent: approx. £1,065.00 per annum TBC

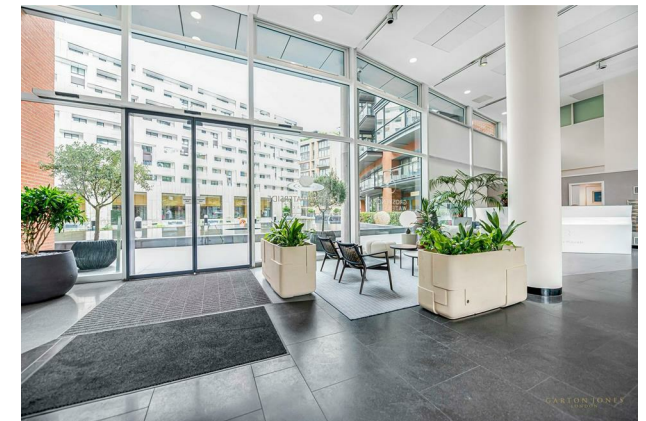
Council Tax: Westminster City Council (Band E)

Lease 999 years from 2003
EWS1 completed

EPC Rating: B

EPC certificate available on request.

- 541 Sq.ft (50.2 Sq.m)
- 1 Double Bedroom
- Open Plan Reception Room
- Kitchen With Miele Integrated Appliances
- Luxury Modern Bathroom
- 24 Hour Concierge
- Juliette Balcony
- Residents Leisure Suite With Gym & Spa Facilities
- On-Site Sainsbury's, Creche, Coffee Shop & Purple Dragon Private Kids Club
- Walking Distance To Sloane Square & Victoria Station



Caro Point

Approximate Gross Internal Area
541 sq ft / 50.2 sq m

