



Caro Point, 5 Gatliff Road
London SW1W

GARTONJONES.COM



Caro Point, 5 Gatliff Road London, SW1W

£623 Per Week

A one DOUBLE bedroom apartment to rent of approx. 527sq.ft (48.9sq.m) on the Grosvenor Waterside Development close to the banks of the River Thames by Chelsea Bridge. This FURNISHED apartment has an open plan reception room with full width floor to ceiling windows, Juliette balcony, an integrated kitchen with Miele appliances, a luxury bathroom, ceiling mounted surround sound speakers and good storage including a utility cupboard housing a washing machine, fitted wardrobes to the bedroom and a coat cupboard in the hallway. SECURE UNDERGROUND PARKING SPACE. There is a 24 HOUR CONCIERGE, GYM & SPA. On-site Sainsbury's Local, coffee shop and private kids club. SLOANE SQUARE & VICTORIA station with Gatwick Express are within walking distance.

Available via Garton Jones' on-site office at Grosvenor Waterside (underneath Bramah House).

Please note furniture may differ or not be included to that shown in the current photos.

Council Tax: Westminster City Council (band E)

5 week security deposit required. 12 month minimum term.

EPC Rating: B (82)

- 527 Sq.ft (48.9 Sq.m)
- 1 Double Bedroom
- Luxury Bathroom
- Open Plan Reception Room
- Kitchen with Miele Integrated Appliances
- Juliette Balcony
- 24 Hour Concierge + Secure Underground Parking
- Residents Leisure Suite with Gym & Spa Facilities
- On-Site Sainsbury's, Coffee Shop & Bakery, Purple Dragon Private Kids Club & Crèche
- Walking Distance to Sloane Square and Victoria Station

GARTON JONES.COM

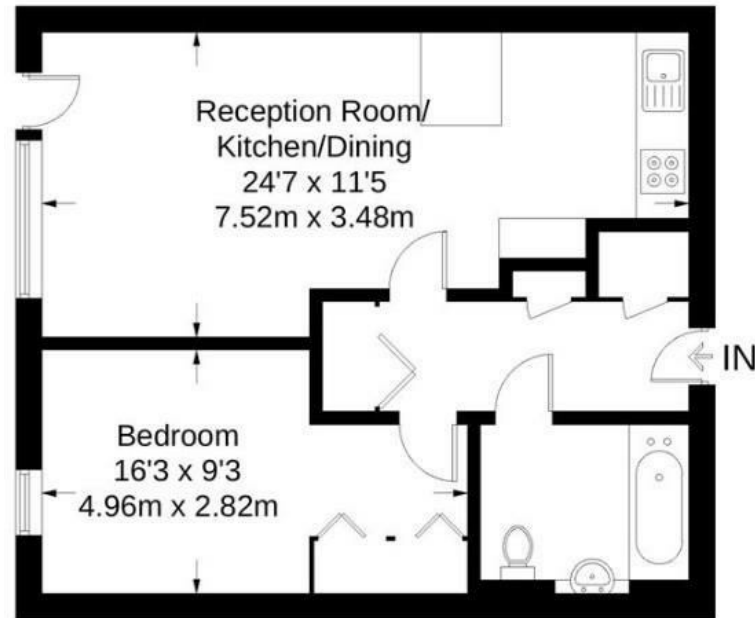
8 Gatliff Road
Grosvenor
Waterside
Chelsea
London
SW1W 8DP

Lettings:
+44 (0) 20 7730 5007
gws@gartonjones.com
www.gartonjones.com



Caro Point

Approximate Gross Internal Area = 527 sq ft / 48.9 sq m



Not to scale, for guidance only and must not be relied upon as a statement of fact.
All measurements and areas are approximate only and have been prepared in accordance with the current edition of the RICS Code of Measuring Practice.

