



Queens Court, Bayswater
London W2

GARTON JONES.COM



Queens Court, Bayswater London, W2

£1,100,000 Leasehold

A spacious 3 bedroom lateral apartment of 1567 sq.ft (145sqm) in this portered building in Bayswater. The living space comprises of a reception room with dining area, kitchen/breakfast room, master bedroom with en-suite shower room, two further double bedrooms and guest bathroom. There is parquet wood flooring and gas central heating. Queensway offers a great selection of shops and restaurants and is in close proximity of Kensington Gardens. The closest underground stations are Queensway (Central Line) and Bayswater (District & Circle Lines), both just a short distance away.

Available via our office is on-site at Grosvenor Waterside (underneath Bramah House)

Lease: 189 years from 24 June 1971 (expires 2160, approx. 136 years remaining)
Service Charges incl Ground Rent: approx. £8,466.46 half yearly

Council Tax: Westminster Council (band G)

EPC certificate available on request.

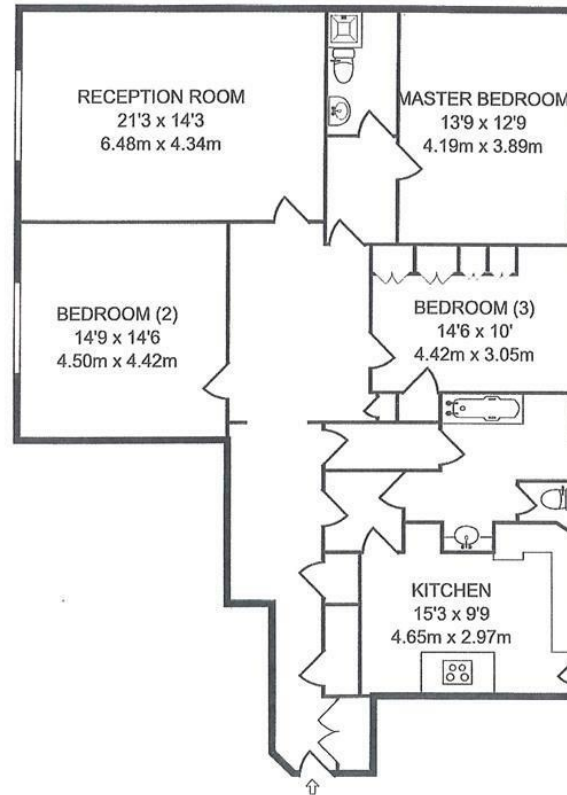
- Spacious Lateral Apartment
- 3 Double Bedrooms
- 2 Bathrooms (1 En-Suite)
- Large Eat-In Kitchen
- Lift
- Porter
- Close To Kensington Gardens
- Moments from Queensway & Bayswater Tube Links

GARTON JONES.COM

8 Gatliff Road
Grosvenor
Waterside
Chelsea
London
SW1W 8DP

Sales +44 (0) 20 7730 5007
gws@gartonjones.com
www.gartonjones.com





FIRST FLOOR GROSS INTERNAL FLOOR AREA
1,567 SQ FT/145.65 SQ M

Representation of current layout, floor area approx 1,567 Sq Ft (145 Sq M)

