



Hepworth Court, 30 Gatliff Road  
London SW1W

GARTON JONES.COM



Hepworth Court, 30 Gatliff Road  
London, SW1W

GARTON JONES.COM

8 Gatliff Road  
Grosvenor  
Waterside  
Chelsea  
London  
SW1W 8DP

Sales +44 (0) 20 7730 5007  
gws@gartonjones.com  
www.gartonjones.com

£725 Per Week

A ONE DOUBLE bedroom apartment to rent of approx. 536sq.ft (49.76sq.m) on Grosvenor Waterside, close to the banks of the River Thames by Chelsea Bridge. This FURNISHED property has an open plan reception room with access to a PRIVATE BALCONY, an integrated kitchen, bathroom and wood flooring and comfort cooling. PARKING IS AVAILABLE BY SEPARATE NEGOTIATION. 24 HOUR CONCIERGE, GYM & SPA. On-site Sainsbury's Local, coffee shop and private kids club. SLOANE SQUARE & VICTORIA station with Gatwick Express are within walking distance.

Available via Garton Jones on-site office at Grosvenor Waterside (underneath Bramah House).

Please note furniture may differ to that shown in the current photos.

EPC Rating: C (80)

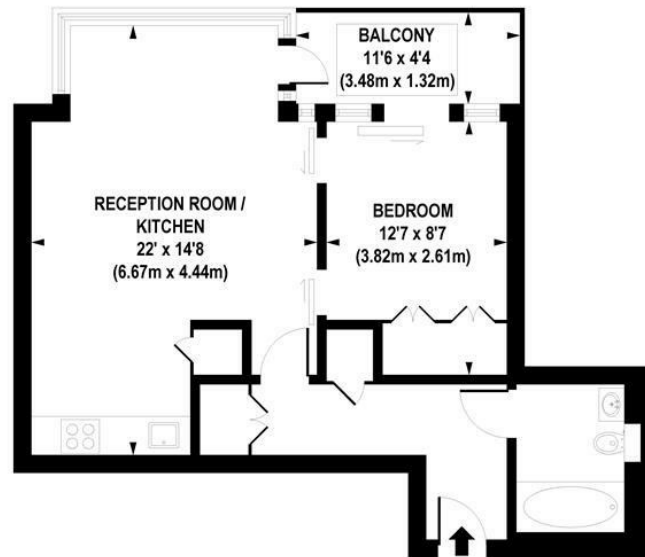
Council Tax: Westminster Council (band E).

12 month minimum term. 5 week deposit required.

EPC certificate available on request.

- 536 Sq.ft (49.76 Sq.m)
- One Double Bedroom
- Open Plan Reception Room
- Integrated Kitchen
- Modern Bathroom
- 24 Hour Concierge
- Private Balcony
- Secure Underground Parking Space (Available By Separate Negotiation)
- Close to Local Shops, Bars & Restaurants
- Walking Distance To Victoria Station & Sloane Avenue





**APPROX. GROSS INTERNAL FLOOR AREA 536 sq. ft / 49.76 sq. m**

Floorplan is for illustrative purposes only and is not to scale.  
Every attempt has been made to ensure the accuracy of the floorplan shown, however all measurements,  
fixtures, fittings and data shown are an approximate interpretation for illustrative purposes only.  
Liability for errors, omissions or mis-statement through negligence or otherwise is hereby excluded.

**CP CREATIVE**  
PROPERTY MARKETING

