



Hirst Court, 20 Gatliff Road
London SW1W

GARTON JONES.COM



Hirst Court, 20 Gatliff Road
London, SW1W

£750 Per Week

GARTON JONES.COM

8 Gatliff Road
Grosvenor
Waterside
Chelsea
London
SW1W 8DP

Lettings:
+44 (0) 20 7730 5007
gws@gartonjones.com
www.gartonjones.com

A TWO BEDROOM, one bathroom apartment to rent of approx. 607sq.ft (56.4sq.m) in Hirst Court, part of the popular Grosvenor Waterside development by Chelsea Bridge. This FURNISHED property benefits from an OPEN PLAN reception room, a modern kitchen with integrated appliances, wood flooring and storage including built in wardrobes to the master bedroom. 24 HOUR CONCIERGE, GYM and SPA. On-site Sainsbury's Local, coffee shop and private kids club. SLOANE SQUARE and VICTORIA station with Gatwick Express are within walking distance.

- 607 Sq.ft (56.4 Sq.m)
- Two Double Bedrooms
- Open Plan Reception Room
- Integrated Kitchen
- Modern Bathroom
- 24 Hour Concierge
- Furnished
- Residents' On-Site Leisure Suite with Gym & Spa Facilities
- On-Site Sainsbury's, The Locals Coffee Shop & Bakery, Big Horizons Crèche & Purple Dragon Private Kids Club
- Walking Distance to Sloane Square & Victoria Transport Links & Amenities



Available via Garton Jones on-site office at Grosvenor Waterside (underneath Bramah House).

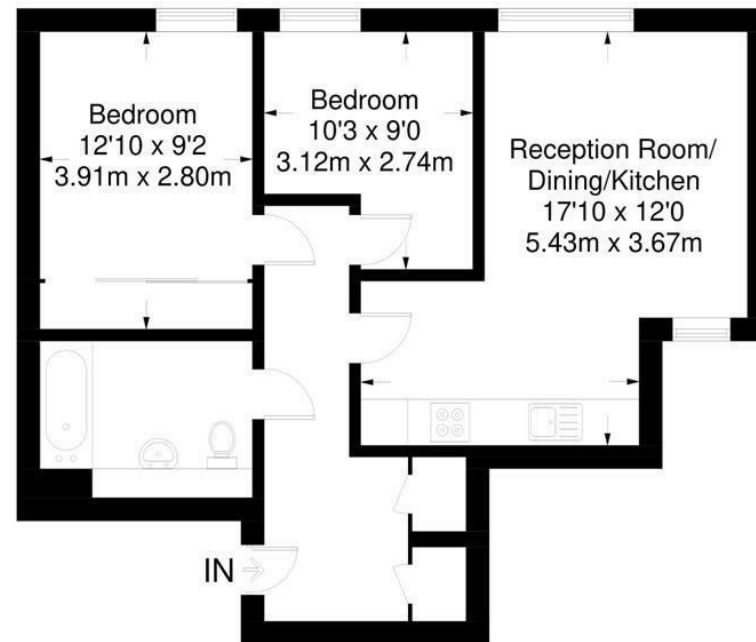
*Please note furniture may differ to that shown in the current photos.

12 month minimum term. 5 week deposit required.



Hirst Court

Approximate Gross Internal Area = 607 sq ft / 56.4 sq m



Not to scale, for guidance only and must not be relied upon as a statement of fact.
All measurements and areas are approximate only and have been prepared in accordance with the current edition of the RICS Code of Measuring Practice.

