



Chantrey House, Belgravia
London SW1W

GARTONJONES.COM



Chantrey House, Belgravia London, SW1W

£1,500 Per Week

A bright and spacious TWO DOUBLE BEDROOM apartment to rent of approx. 1159sq.ft (107.67sq.m) in this residential development in Belgravia. This impressive property is FURNISHED to a high standard and benefits from an OPEN PLAN reception room, a kitchen with a breakfast bar island and integrated appliances. There are two luxury en-suite bathrooms, a guest cloakroom, wood flooring, comfort cooling, good storage including fitted wardrobes to both bedrooms and a utility cupboard housing a washing machine and dryer. The property has also been fitted with Samsung flat screen televisions. 24 HOUR CONCIERGE.

Available via our on-site office at Grosvenor Waterside (underneath Bramah House), approximately a five minute walk from the property. Belgravia, Elizabeth Street, Knightsbridge, and SLOANE SQUARE are within easy access and Victoria Mainline station, with access to Gatwick Express trains, are just a few minutes' walk. Hot water and electricity are also included.

Council Tax Band: Westminster Council (band G).

Please note the furniture may differ or not be included to that shown in current photos.

6 week security deposit required. 12 month minimum term.

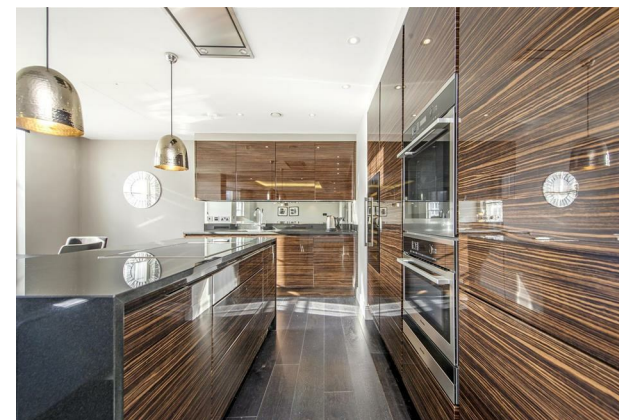
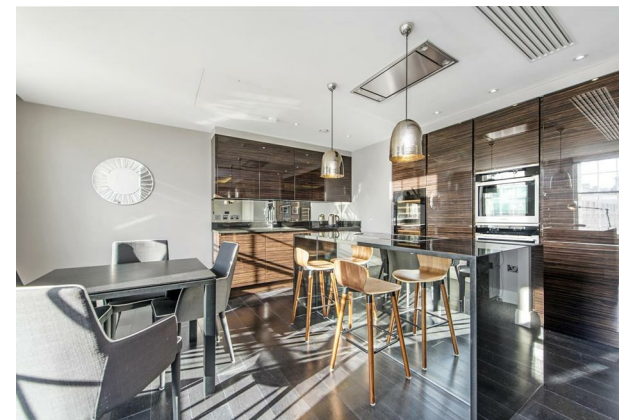
Please note this development does not accept pets.

- 1159 Sq.ft (107.67 Sq.m)
- 2 Double Bedrooms
- 2 En-Suite Bathrooms
- Open Plan Reception Room
- Kitchen with Miele Integrated Appliances
- Guest Cloak Room
- 24 Hour Concierge
- Hot Water & Electricity Included in Rent
- Close to Shops, Bars & Restaurants
- Moments from Victoria Mainline & Underground Station

GARTON JONES.COM

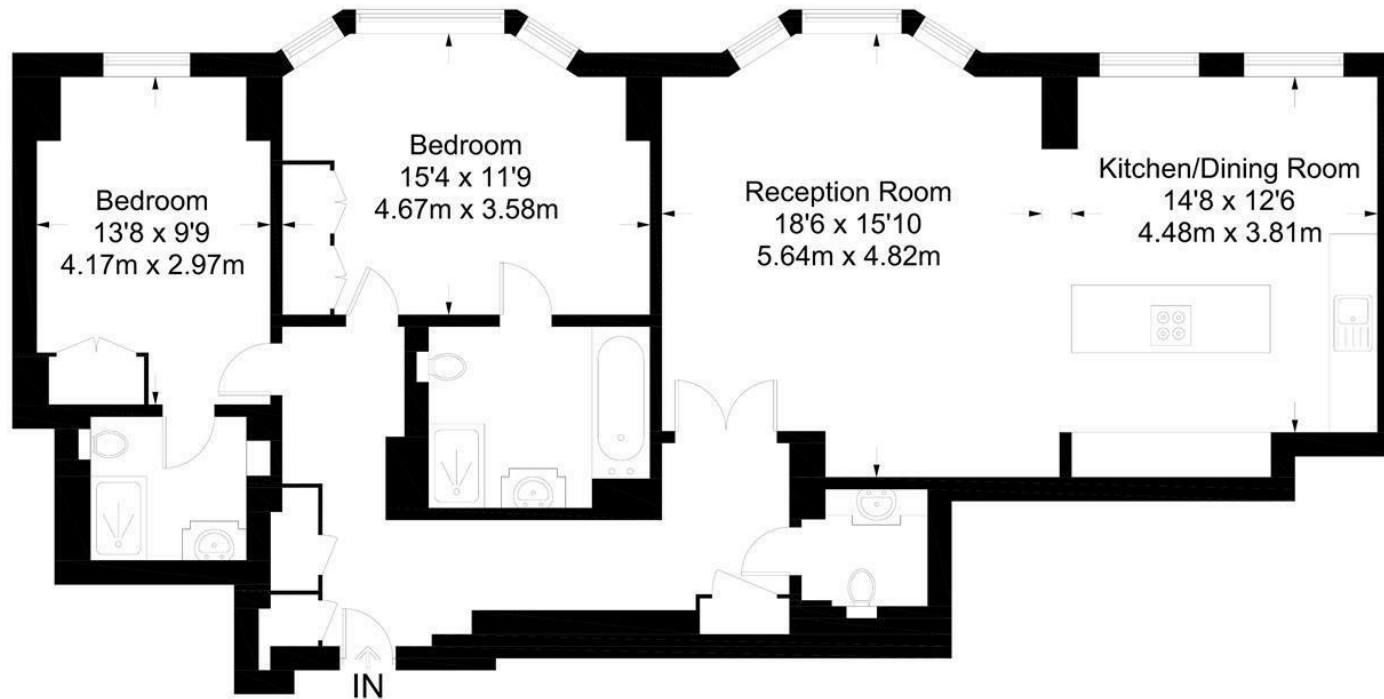
8 Gatliff Road
Grosvenor
Waterside
Chelsea
London
SW1W 8DP

Lettings:
+44 (0) 20 7730 5007
gws@gartonjones.com
www.gartonjones.com



Chantrey House

Approximate Gross Internal Area = 1159 sq ft / 107.67 sq m



Not to scale, for guidance only and must not be relied upon as a statement of fact.
All measurements and areas are approximate only and have been prepared in
accordance with the current edition of the RICS Code of Measuring Practice.

