



Hepworth Court, 30 Gatliff Road
London SW1W

GARTONJONES.COM



Hepworth Court, 30 Gatliff Road London, SW1W

£495 Per Week

IMMEDIATELY AVAILABLE. A bright and very spacious studio apartment for rent of approx. 410 sq.ft (38 sq.m) in Hepworth Court, part of the popular Grosvenor Waterside development in Chelsea. The development surrounds the former Grosvenor dock. This FURNISHED apartment benefits from an open plan reception room with a modern integrated kitchen, wood flooring and floor to ceiling windows leading to a PRIVATE BALCONY. 24 HOUR CONCIERGE, GYM & SPA. On-site Sainsbury's Local, coffee shop and private kids club. SLOANE SQUARE & VICTORIA station with Gatwick Express are within walking distance. Close to the shops, bars and eateries on King's Road. Battersea Park is also just a short stroll away across Chelsea Bridge.

Available via Garton Jones' on-site office at Grosvenor Waterside (underneath Bramah House).

Please note furniture may differ to that shown in the current photos.

Parking is not included but available under separate negotiation.

Council Tax: Westminster City Council (band E)

12 month minimum term. 5 week deposit required.

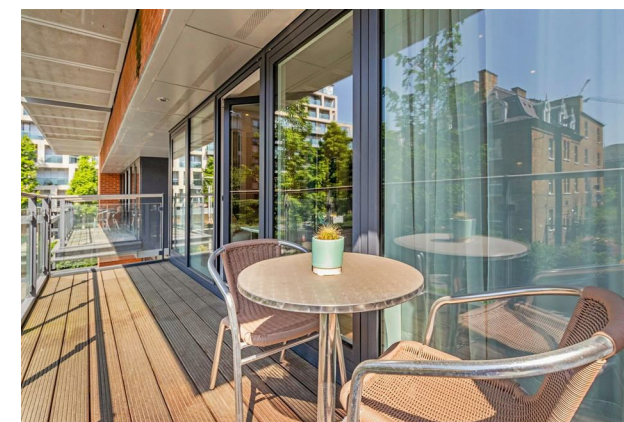
EPC Rating: B (82)

- IMMEDIATELY AVAILABLE
- 410 Sq.ft (38 Sq.m)
- Studio Apartment
- Modern Bathroom
- Kitchen With Miele Integrated Appliances
- Balcony
- 24 Hour Concierge
- Parking Available By Separate Negotiation
- On-Site Sainsbury's, Coffee Shop & Bakery, Purple Dragon Private Kids Club & Crèche
- Walking Distance To Sloane Square & Victoria Station

GARTON JONES.COM

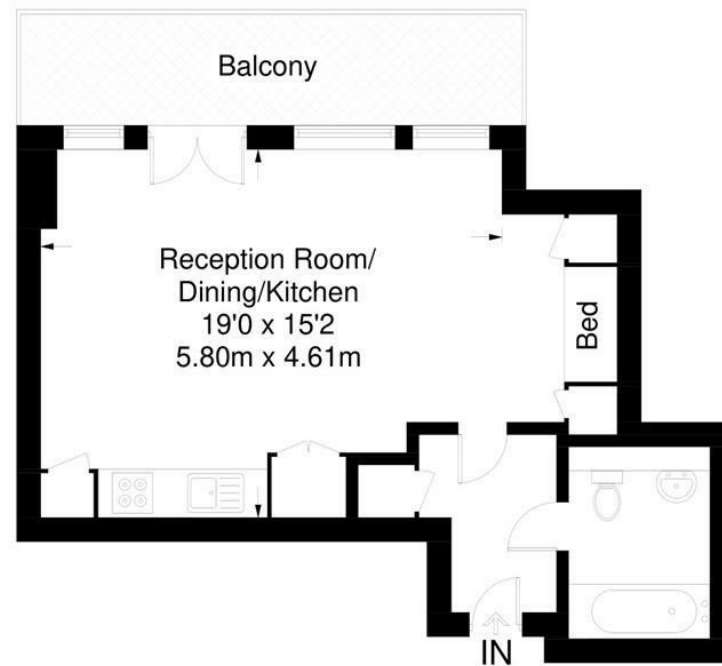
8 Gatliff Road
Grosvenor
Waterside
Chelsea
London
SW1W 8DP

Lettings:
+44 (0) 20 7730 5007
gws@gartonjones.com
www.gartonjones.com



Hepworth Court

Approximate Gross Internal Area = 410 sq ft / 38 sq m



Not to scale, for guidance only and must not be relied upon as a statement of fact.
All measurements and areas are approximate only and have been prepared in accordance with the current edition of the RICS Code of Measuring Practice.

