



Moore House, 2 Gatliff Road  
London SW1W

GARTON JONES.COM



# Moore House, 2 Gatliff Road London, SW1W

## £675 Per Week

A ONE DOUBLE BEDROOM apartment to RENT of approx. 547sq.ft (53.85sq.m) in Moore House, part of the popular Grosvenor Waterside development in Chelsea. This FURNISHED property benefits from an open plan reception room, a kitchen with integrated appliances, UNDERFLOOR HEATING, wood flooring, a luxury bathroom and good storage including fitted wardrobes to the bedroom and a utility cupboard housing a washing machine. 24 HOUR CONCIERGE, GYM & SPA. On-site Sainsbury's Local, coffee shop and private kids club. SLOANE SQUARE & VICTORIA station with Gatwick Express are within walking distance.

Available via Garton Jones' on-site office at Grosvenor Waterside (underneath Bramah House).

Please note the furniture may differ or not be included to that that shown in current photos.

Westminster Council (band E)

12 month minimum term. 5 week deposit required.

EPC Rating: B (84)

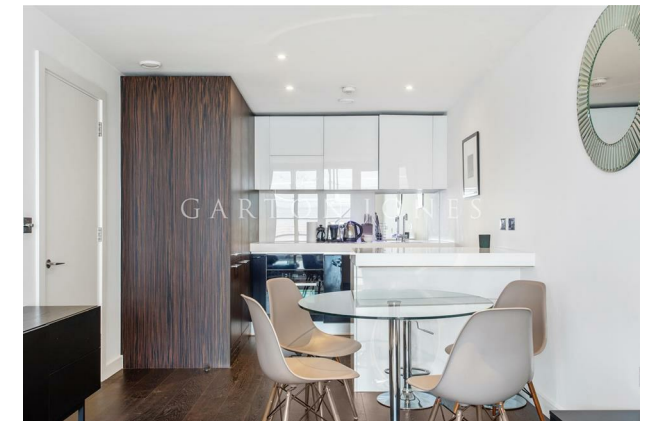
EPC certificate available on request.

- 547 Sq.ft (53.85 Sq.m)
- Open Plan Reception Room
- 1 Double Bedroom
- Kitchen With Integrated Appliances
- Modern Bathroom
- 24 Hour Concierge
- On-Site Residents' Gym & Spa Facilities
- On-Site Purple Dragon Kids' Club, Creche, Sainsbury's & Coffee Shop
- Within Walking Distance Of Victoria Train Station & Sloane Square

## GARTON JONES.COM

8 Gatliff Road  
Grosvenor  
Waterside  
Chelsea  
London  
SW1W 8DP

Sales +44 (0) 20 7730 5007  
gws@gartonjones.com  
www.gartonjones.com





**APPROX. GROSS INTERNAL FLOOR AREA 525 sq. ft / 48.73 sq. m**

Floorplan is for illustrative purposes only and is not to scale.  
Every attempt has been made to ensure the accuracy of the floorplan shown, however all measurements, fixtures, fittings and data shown are an approximate interpretation for illustrative purposes only.  
Liability for errors, omissions or mis-statement through negligence or otherwise is hereby excluded.

**CP CREATIVE**  
PROPERTY MARKETING

