



Caro Point, 5 Gatliff Road
London SW1W

GARTONJONES.COM



Caro Point, 5 Gatliff Road
London, SW1W

£575 Per Week

GARTON JONES.COM

8 Gatliff Road
Grosvenor
Waterside
Chelsea
London
SW1W 8DP

Lettings:
+44 (0) 20 7730 5007
gws@gartonjones.com
www.gartonjones.com

A Manhattan style STUDIO apartment to RENT of approx. 367sq.ft (34.1sq.m) in Caro Point, Grosvenor Waterside development. The apartment has wood flooring and an open plan reception room with an integrated kitchen, and sliding door to bedroom. There is very good storage including a utility cupboard housing a washer/dryer and built in wardrobes to the bedroom and there is a modern shower room. Residents also benefit from 24 HOUR CONCIERGE, GYM & SPA. On-site Sainsbury's Local, coffee shop and private kids club. SLOANE SQUARE & VICTORIA Station with Gatwick Express are within walking distance.

Available via Garton Jones on-site office at Grosvenor Waterside (underneath Bramah House).

Please note the furniture may differ or not be included to that shown in current photos.

Council Tax: Westminster Council (band D).

12 month minimum term. 5 week deposit required.

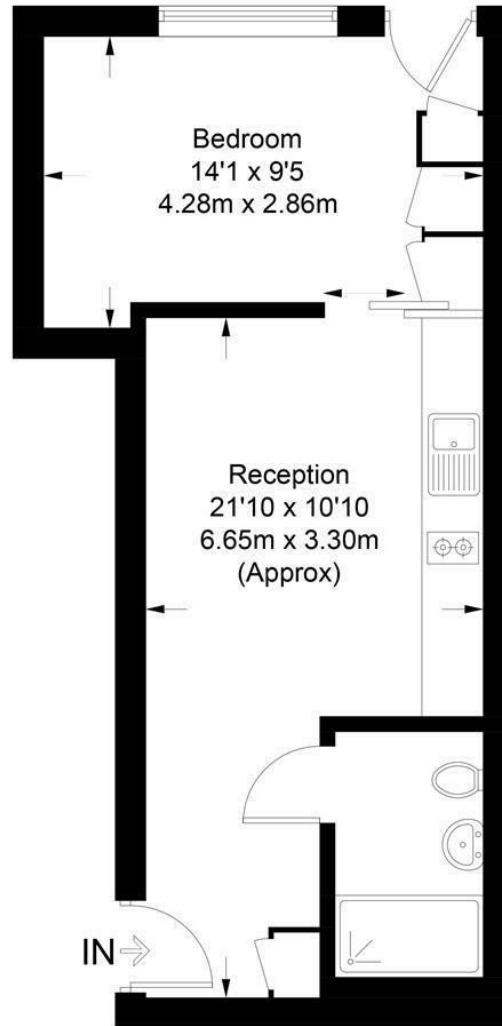
EPC Rating: (D)

- 367 Sq.ft (34.1 Sq.m)
- Manhattan Style Studio Apartment
- Open Plan Reception Room
- Integrated Kitchen
- Shower Room
- 24 Hour Concierge
- Good Storage
- Smart Leisure Suite With Gym & Spa Facilities
- On-Site Sainsbury's & Close to Sloane Square Transport Links & Amenities



Caro Point

Approximate Gross Internal Area = 367 sq ft / 34.1 sq m



© 2014 Garton Jones Ltd

