



Moore House, 2 Gatliff Road
London SW1W

GARTON JONES.COM



Moore House, 2 Gatliff Road
London, SW1W

£650 Per Week

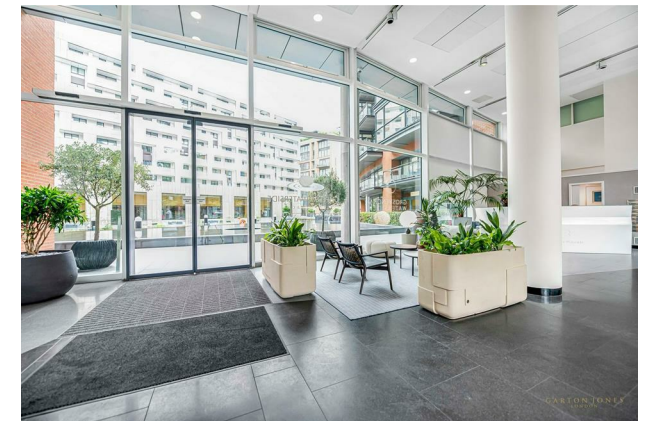
GARTON JONES.COM

8 Gatliff Road
Grosvenor
Waterside
Chelsea
London
SW1W 8DP

Sales +44 (0) 20 7730 5007
gws@gartonjones.com
www.gartonjones.com

A ONE DOUBLE BEDROOM apartment to RENT of approx. 660 sq.ft (61 sq.m) in Moore House, part of the popular Grosvenor Waterside development in Chelsea. This FURNISHED property benefits from an open plan reception room, a kitchen with integrated appliances, wood flooring throughout, a recently fitted modern bathroom and good storage including fitted wardrobes to the bedroom and a utility cupboard housing a recently installed Bosch washer dryer 24 HOUR CONCIERGE, GYM & SPA. On-site Sainsbury's Local, coffee shop and private kids club. SLOANE SQUARE & VICTORIA station with Gatwick Express are within walking distance. Battersea Park is also just a short stroll away across Chelsea Bridge.

- 660 Sq.ft (61 Sq.m)
- 1 Double Bedroom
- Open Plan Reception
- Kitchen With Integrated Appliances
- Recently Fitted Modern Bathroom
- Good Storage
- 24 Hour Concierge
- Residents' Gym & Spa Facilities
- On-Site Sainsbury's Local, Coffee Shop, Creche, & Private Kids Club
- Close To Victoria Train Station & Sloane Square



Available via Garton Jones' on-site office at Grosvenor Waterside (underneath Bramah House).

EPC Rating: B

5 week deposit required. 12 month minimum term.

Council Tax: Westminster Council (band E).

EPC certificate available on request.



Approximate Gross Internal Area
660 sq ft / 61.34 sq m
Type: 3.12

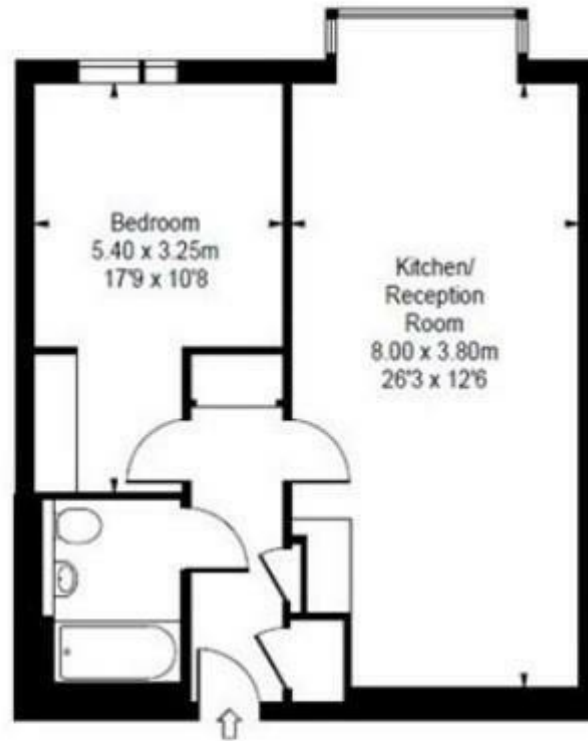


ILLUSTRATION FOR IDENTIFICATION PURPOSES ONLY

ALL MEASUREMENTS ARE MAXIMUM, AND INCLUDE WINDOW BAYS AND WARDROBES WHERE APPLICABLE
THIS PLAN MUST NOT BE REPRODUCED BY ANY OTHER PERSON WITHOUT PERMISSION

