



Hepworth Court, 30 Gatliff Road  
London SW1W

GARTON JONES.COM



Hepworth Court, 30 Gatliff Road  
London, SW1W

GARTON JONES.COM

8 Gatliff Road  
Grosvenor  
Waterside  
Chelsea  
London  
SW1W 8DP

Lettings:  
+44 (0) 20 7730 5007  
gws@gartonjones.com  
www.gartonjones.com

£650 Per Week

A bright and spacious ONE DOUBLE BEDROOM apartment of approx 440 Sq.ft (41sq.m) on Grosvenor Waterside located close to the banks of the River Thames by Chelsea Bridge. There is an open plan reception room with an integrated kitchen, a modern bathroom, comfort cooling, balcony, built in wardrobes to the bedroom. 24 HOUR CONCIERGE, GYM & SPA. UNDERGROUND PARKING available by separate negotiation. On-site Sainsbury's Local, coffee shop and private kids club. SLOANE SQUARE & VICTORIA station with Gatwick Express are within walking distance.

- 440 Sq.ft (40sq.m)
- 1 Double Bedroom
- Modern Bathroom
- Open Plan Reception Room
- Integrated Kitchen
- 24 Hour Concierge
- Close to Sloane Square & Victoria Station
- Secure Underground Parking Available By Separate Negotiation
- Residents Gym With Spa Facilities



Available via Garton Jones on-site office at Grosvenor Waterside (underneath Bramah House).

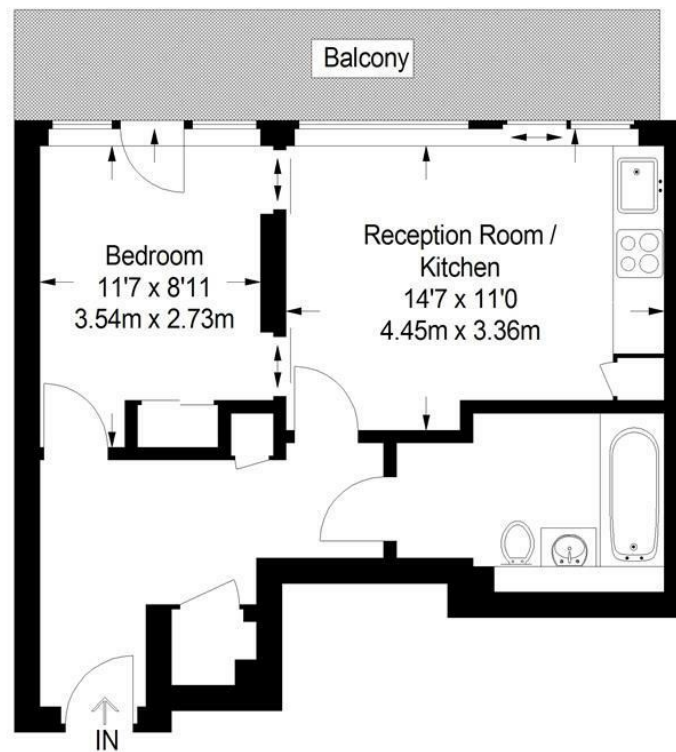
Please note furniture may differ to that shown in the current photos.

Westminster City Council (Band E) total  
£1,114.73 per annum 2023/2024

12 month minimum Term. 5 week deposit required

## Hepworth Court

Approximate Gross Internal Area  
440 sq ft / 40.9 sq m



Sixth Floor

