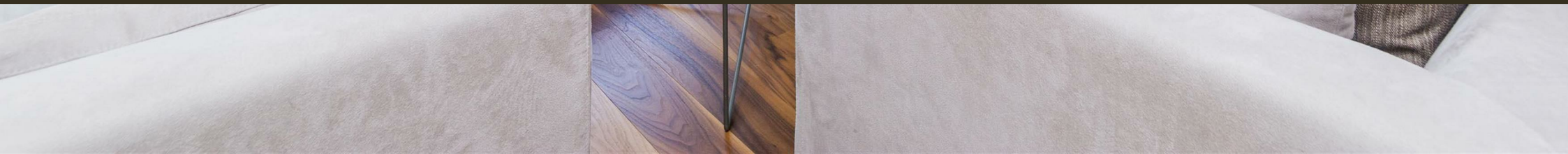




Cubitt Building, 10 Gatliff Road
London SW1W

GARTON JONES.COM



Cubitt Building, 10 Gatliff Road London, SW1W

£700 Per Week

A tasteful and spacious ONE DOUBLE BEDROOM apartment to rent of approx. 604 sq.ft (56 sq.m), in Cubitt Building, one of the buildings forming part of the popular Grosvenor Waterside development in Chelsea. This apartment benefits from an open plan reception room, a kitchen with integrated appliances, 2 BALCONIES, en-suite bathroom, wood flooring, comfort cooling, good storage including a utility cupboard housing a washing machine and fitted wardrobes to the bedroom plus DRESSING ROOM. 24 HOUR CONCIERGE, GYM & SPA. On-site Sainsbury's Local, coffee shop and private kids club. SLOANE SQUARE & VICTORIA station with Gatwick Express are within walking distance.

Available via Garton Jones' on-site office at Grosvenor Waterside (underneath Bramah House).

Please note furniture may differ or not be included to that shown in the current photos.

Council Tax: Westminster City Council (band E)

EPC Rating: C

5 week deposit required. 12 month minimum term.

EPC certificate available on request.

GARTON JONES.COM

8 Gatliff Road
Grosvenor
Waterside
Chelsea
London
SW1W 8DP

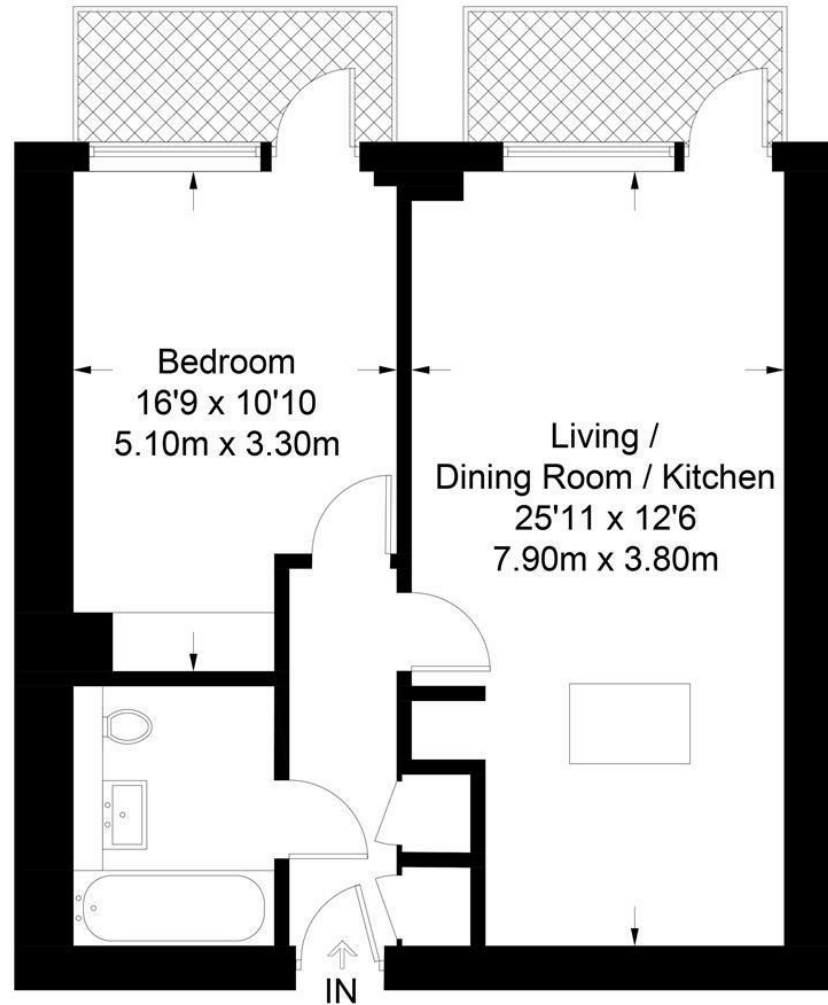
Sales +44 (0) 20 7730 5007
gws@gartonjones.com
www.gartonjones.com

- 604 Sq.ft (56 Sq.m)
- One Double Bedroom
- Open Plan Reception Room
- Integrated Kitchen
- En-Suite Bathroom
- 24 Hour Concierge Service
- 2 Private Balconies
- Dressing Room
- On-Site Residents' Gym, Spa, Sainsbury's Local, Coffee Shop Creche & Purple Dragon Private Kids' Club
- Within Walking Distance Of Sloane Square & Victoria Train Station



Cubitt Building

Approximate Gross Internal Area = 604 sq ft / 56 sq m



Not to scale, for guidance only and must not be relied upon as a statement of fact.
All measurements and areas are approximate only and have been prepared in
accordance with the current edition of the RICS Code of Measuring Practice.

