



Woods House, 7 Gatliff Road  
London SW1W

GARTONJONES.COM



# Woods House, 7 Gatliff Road London, SW1W

## £675 Per Week

A One DOUBLE BEDROOM apartment to rent of approx. 489sq.ft (45.4sq.m) on the 11th floor (with lift) of Woods House, on Grosvenor Waterside development in Chelsea. This FURNISHED property further benefits from an open plan reception room with a JULIETTE STYLE BALCONY with FAR REACHING VIEWS of the London skyline. There is modern kitchen, a bathroom, storage including built in wardrobes to the bedroom and wood flooring. 24 HOUR CONCIERGE. On-site Sainsbury's Local, coffee shop and private kids club. SLOANE SQUARE & VICTORIA station with Gatwick Express are within walking distance. Battersea Park is also just a short stroll away across Chelsea Bridge.

Available via Garton Jones on-site office at Grosvenor Waterside (underneath Bramah House).

Please note furniture may differ to that shown in the current photos

5 week deposit required. 12 month minimum term.

Council Tax: Westminster Council (band D)

EPC Rating: C (79)

- 489 Sq.ft (45.4 Sq.m)
- 1 Double Bedroom
- Open Plan Reception Room
- Modern Kitchen
- Bathroom
- 24 Hour Concierge
- Juliette Style Balcony
- On-Site Residents Gym & Spa Facilities (Payable)
- On-Site Sainsbury's, Creche, Coffee Shop & Purple Dragon Private Kids Club
- Walking Distance To Sloane Square & Victoria Station

## GARTON JONES.COM

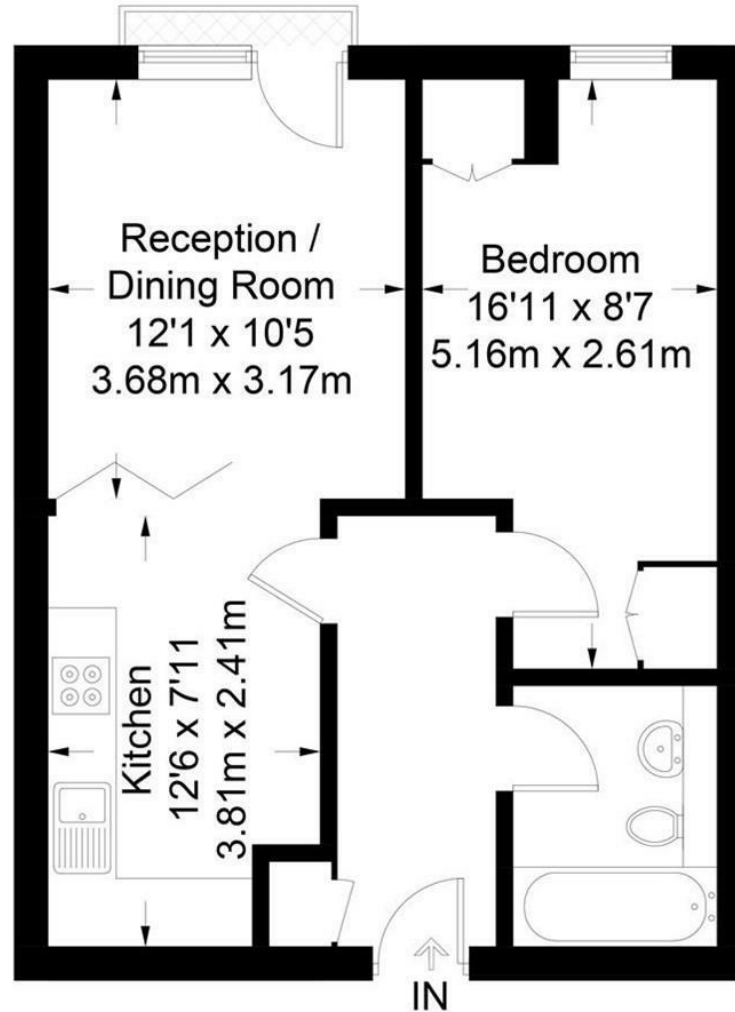
8 Gatliff Road  
Grosvenor  
Waterside  
Chelsea  
London  
SW1W 8DP

Lettings:  
+44 (0) 20 7730 5007  
gws@gartonjones.com  
www.gartonjones.com



**Woods House**

Approximate Gross Internal Area = 489 sq ft / 45.4 sq m



Not to scale, for guidance only and must not be relied upon as a statement of fact.  
All measurements and areas are approximate only and have been prepared in accordance with the current edition of the RICS Code of Measuring Practice.

