



Moore House, 2 Gatliff Road
London SW1W

GARTONJONES.COM

Moore House, 2 Gatliff Road London, SW1W

£495 Per Week

A stylish and modern studio apartment of approx. 409 sq.ft (38 sq.m) available to rent in Moore House, Grosvenor Waterside development. Overlooking Chelsea Barracks, this property is FURNISHED and has an open plan living area to include a fitted wall mounted pull down double bed, integrated kitchen with Miele appliances, wood flooring, good storage including wardrobe space and a utility cupboard and a sperate shower room. Residents will have the use of a 24 hour concierge service, a leisure suite with a well-equipped gym and spa facilities. There is an on-site Sainsbury's Local, a coffee shop, crèche and Purple Dragon private kids club. The additional amenities including shops, restaurants and the excellent transport links of both Sloane Square and Victoria with link to Gatwick Express, are within walking distance. Battersea Park is also just a short stroll away across Chelsea Bridge.

Available via Garton Jones' on-site office at Grosvenor Waterside (underneath Bramah House).

Council Tax: Westminster City Council (band D).

*Please note the furniture may differ or not be included to that shown in the current photos.

12 month minimum term. 5 week deposit required.

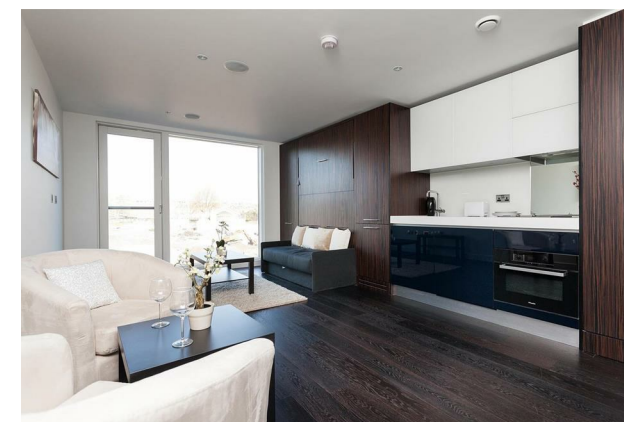
EPC Rating: B (81)

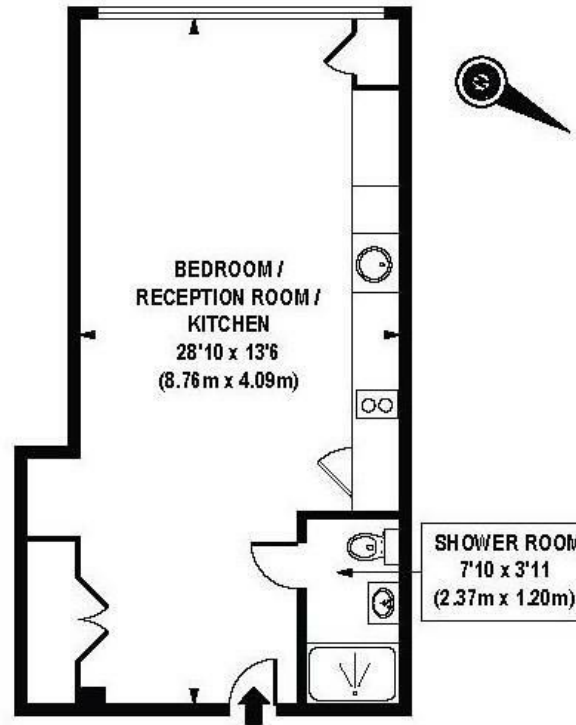
- 409sq.ft (37.98 sq.m)
- Studio Apartment
- Modern Bathroom
- Open Plan Living
- Kitchen with Miele Integrated Appliances
- Furnished
- 24 Hour Concierge
- Residents Leisure Suite with Gym & Spa Facilities
- On-Site Sainsbury's, Coffee Shop & Bakery, Purple Dragon Private Kids Club & Crèche
- Walking Distance to Sloane Square and Victoria Station

GARTON JONES.COM

8 Gatliff Road
Grosvenor
Waterside
Chelsea
London
SW1W 8DP

Lettings:
+44 (0) 20 7730 5007
gws@gartonjones.com
www.gartonjones.com





APPROX. GROSS INTERNAL FLOOR AREA 409 sq. ft / 37.98 sq. m

