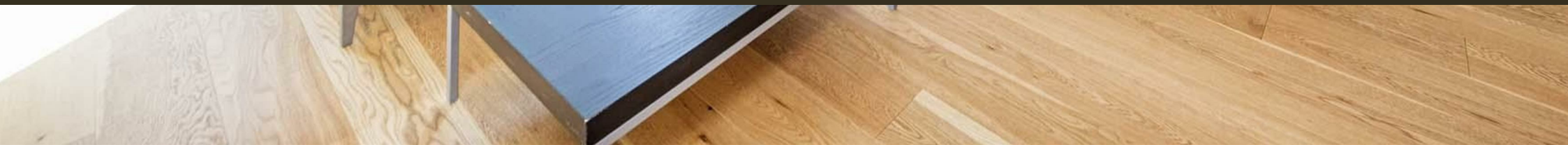




Hirst Court, 20 Gatliff Road  
London SW1W

GARTONJONES.COM



Hirst Court, 20 Gatliff Road  
London, SW1W

£795 Per Week

GARTON JONES.COM

8 Gatliff Road  
Grosvenor  
Waterside  
Chelsea  
London  
SW1W 8DP

Lettings:  
+44 (0) 20 7730 5007  
gws@gartonjones.com  
www.gartonjones.com

A TWO DOUBLE BEDROOM of approx. 796 sq.ft (74 sq.m) in Hirst Court, one of the buildings forming the popular Grosvenor Waterside development in Chelsea. There are two en-suite bathrooms & a guest cloakroom, wood flooring in the reception room with access to a PRIVATE BALCONY and a modern fitted kitchen. 24 HOUR CONCIERGE, GYM & SPA. On-site Sainsbury's Local, coffee shop and private kids club. SLOANE SQUARE & VICTORIA station with Gatwick Express are within walking distance.

Available via Garton Jones' on-site office at Grosvenor Waterside (underneath Bramah House).

Please note furniture may differ to that shown in the current photos.

Council Tax: Westminster City Council (band F)

12 month minimum term. 5 week deposit required.

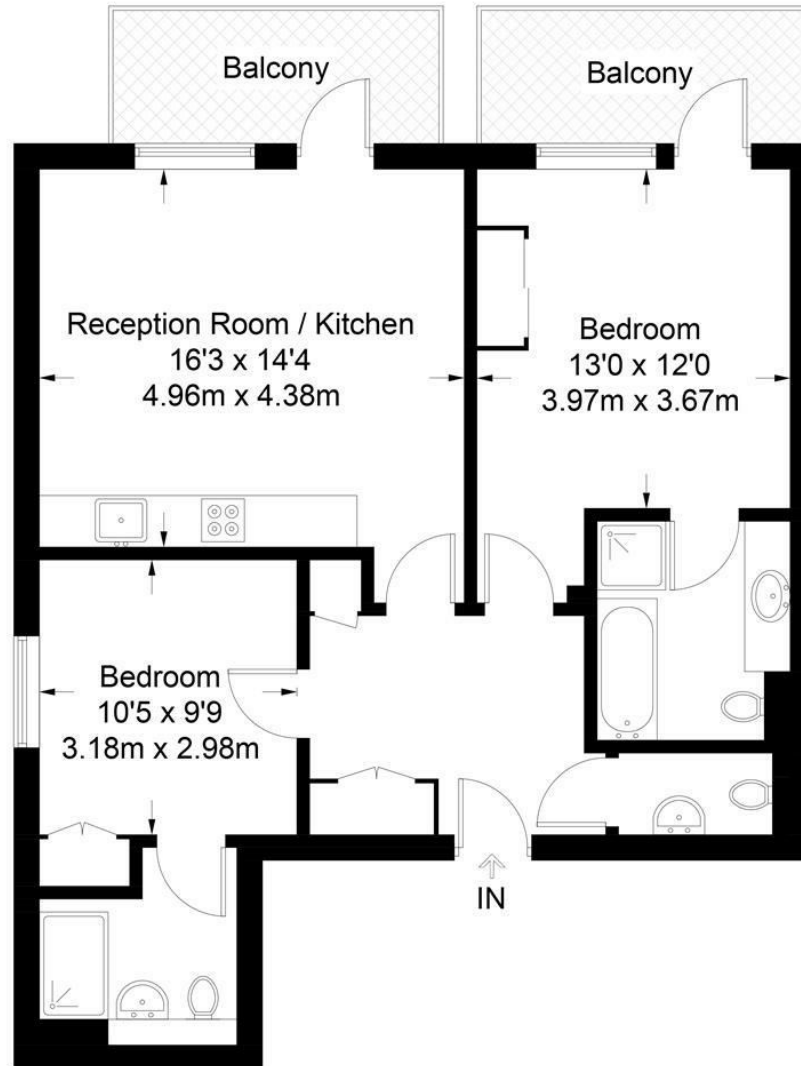
EPC Rating: C (74)

- 796 Sq.ft (74 Sq.m)
- 2 Double Bedrooms
- 2 Bathrooms (1 En-Suite)
- Open Plan Reception Room
- Kitchen with Miele Integrated Appliances
- 24 Hour Concierge Service
- Dock Facing Balcony
- Residents Leisure Suite with Gym & Spa Facilities
- On-Site Sainsbury's, Coffee Shop & Bakery, Purple Dragon Private Kids Club & Crèche
- Walking Distance To Sloane Square & Victoria Station



**Hirst Court**

Approximate Gross Internal Area = 796 sq ft / 74 sq m



Not to scale, for guidance only and must not be relied upon as a statement of fact.  
All measurements and areas are approximate only and have been prepared in accordance with the current edition of the RICS Code of Measuring Practice.

