



Cubitt Building, 10 Gatliff Road
London SW1W

GARTONJONES.COM

Cubitt Building, 10 Gatliff Road London, SW1W

£460 Per Week

GARTON JONES.COM

8 Gatliff Road
Grosvenor
Waterside
Chelsea
London
SW1W 8DP

Lettings:
+44 (0) 20 7730 5007
gws@gartonjones.com
www.gartonjones.com

A studio apartment to rent of approx. 339sq.ft (32sq.m) in Cubitt Building, one of the buildings forming the popular Grosvenor Waterside development in Chelsea that surrounds the historic Grosvenor Dock. This furnished apartment has open plan living with a modern kitchen, a wall mounted pull down double bed, storage and a utility cupboard housing a washer dryer and a modern bathroom. Residents will have the use of a 24 hour concierge service and the gym and spa facilities. There is an on-site Sainsbury's Local, a coffee shop, crèche and Purple Dragon private kids club. The additional amenities including shops, restaurants and the excellent transport links of both Sloane Square and Victoria are within walking distance.

Available via Garton Jones' on-site office at Grosvenor Waterside (underneath Bramah House).

*Please note the furniture may differ or not be included to that shown in current photos.

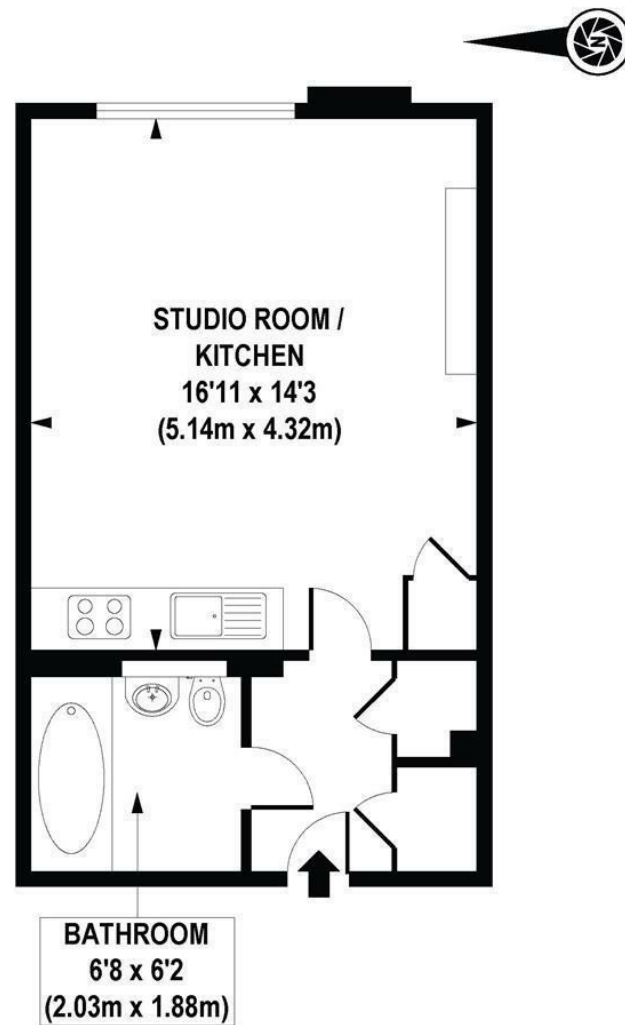
Council Tax: Westminster Council (band E)

5 week deposit required. 12 month minimum term.

EPC Rating:

- 339 Sq.ft (32 Sq.m)
- Studio Apartment
- Open Plan Living
- Modern Integrated Kitchen
- Bathroom
- Furnished
- 24 Hour Concierge
- Leisure Suite With Gym & Spa Facilities
- On-Site Sainsbury's, Coffee Shop, Crèche & Purple Dragon Kids Club
- Walking Distance To Sloane Square & Victoria Station





APPROXIMATE GROSS INTERNAL AREA 339 sq. ft / 31.46 sq. m

