



Hirst Court, 20 Gatliff Road
London SW1W

GARTON JONES.COM

Hirst Court, 20 Gatliff Road
London, SW1W

GARTON JONES.COM

8 Gatliff Road
Grosvenor
Waterside
Chelsea
London
SW1W 8DP

Sales +44 (0) 20 7730 5007
gws@gartonjones.com
www.gartonjones.com

£775 Per Week

A spacious and well-presented one DOUBLE BEDROOM apartment to rent of approx. 646 sq.ft (60 sq.m). in Hirst Court, Grosvenor Waterside development near Chelsea Bridge. This FURNISHED apartment comprises of an OPEN PLAN reception room, a kitchen with integrated appliances, TWO BALCONIES, wood flooring, good storage, a guest cloakroom plus an en-suite bathroom with a separate shower. Residents have use of the 24 HOUR CONCIERGE, GYM and SPA. On-site Sainsbury's Local, coffee shop and private kids club. SLOANE SQUARE and VICTORIA station with Gatwick Express are within walking distance.

- 646 Sq.ft (60 Sq.m)
- One Double Bedroom
- Open Plan Reception Room
- Modern Integrated Kitchen
- En-Suite Bathroom With Separate Shower
- 24 Hour Concierge
- Two Balconies
- Residents' On-Site Gym & Spa Facilities
- On-Site Sainsbury's Local, Coffee Shop and Private Kids' Club
- Close to Sloane Square & Victoria Stations



Available via Garton Jones on-site office at Grosvenor Waterside (underneath Bramah House).

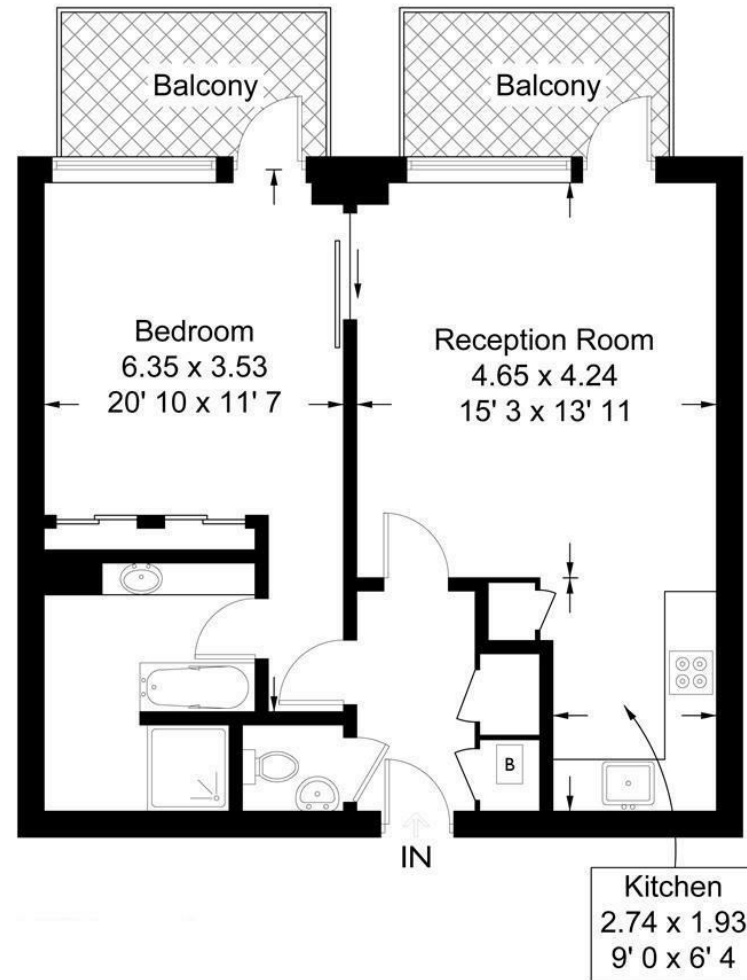
Council Tax: Westminster City Council (band E)

5 week deposit required. 12 month minimum term.

EPC certificate available on request.

Hirst Court

Approximate Gross Internal Area = 646 sq ft / 60 sq m



Not to scale, for guidance only and must not be relied upon as a statement of fact
All measurements and areas are approximate only and have been prepared in
accordance with the current edition of the RICS Code of Measuring Practice

