



Hepworth Court, 30 Gatliff Road
London SW1W

GARTONJONES.COM

Hepworth Court, 30 Gatliff Road
London, SW1W

GARTON JONES.COM

8 Gatliff Road
Grosvenor
Waterside
Chelsea
London
SW1W 8DP

Lettings:
+44 (0) 20 7730 5007
gws@gartonjones.com
www.gartonjones.com

£695 Per Week

A ONE DOUBLE BEDROOM apartment for rent of approx. 568sq.ft (48sq.m) in Hepworth Court, Grosvenor Waterside. The development is located in Chelsea and surrounds the historic Grosvenor Dock. This FURNISHED apartment has an open plan reception room with an integrated kitchen, wood flooring, floor to ceiling windows leading to a balcony and comfort cooling. 24 HOUR CONCIERGE, GYM & SPA. On-site Sainsbury's Local, coffee shop and private kids club. SLOANE SQUARE & VICTORIA station with Gatwick Express are within walking distance.

- 568 sq.ft (52.8sq.m)
- One Double Bedroom Apartment
- Open Plan Reception Room
- Modern Bathroom
- Integrated Kitchen Appliances
- Private Balcony
- 24 Hour Concierge Service
- Residents' On-Site Gym & Spa Facilities
- On-Site Sainsburys, Coffee Shop & Bakery, Crèche & Purple Dragon Private Kids' Club
- Walking Distance To Sloane Square & Victoria



Available via Garton Jones on-site office at Grosvenor Waterside (underneath Bramah House).

Council Tax: Westminster City Council (Band E)

Please note the furniture may differ or not be included to that shown in current photos.

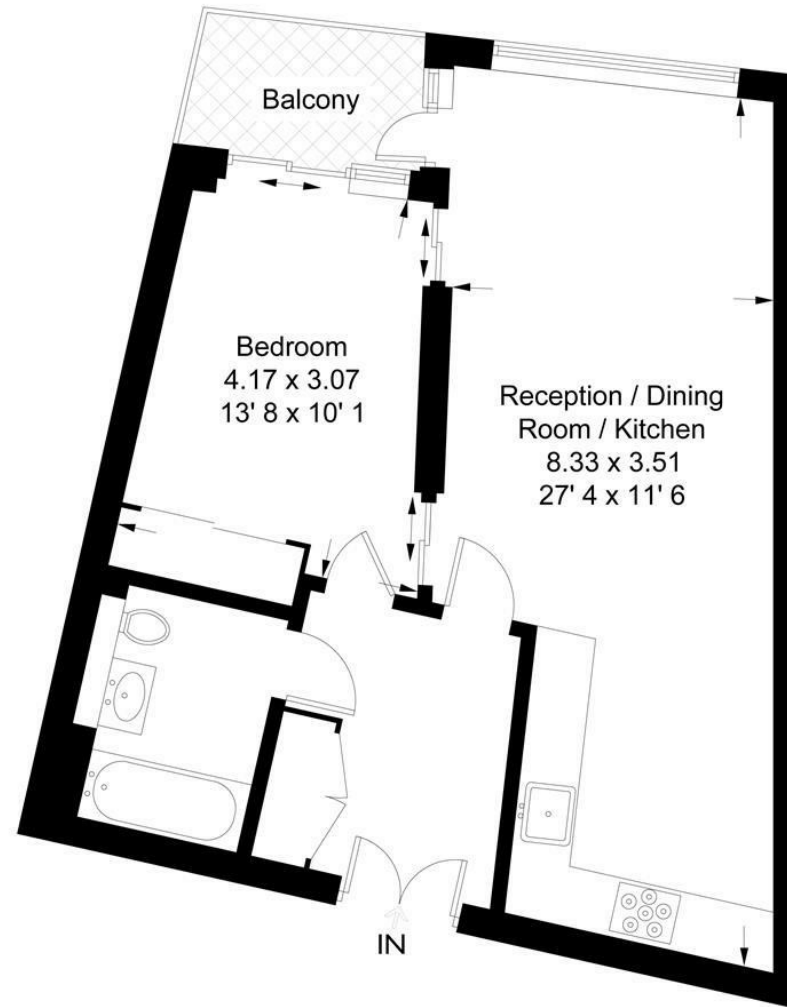
12 month minimum term. 5 week deposit required.

EPC Rating: D (64)



Hepworth Court

Approximate Gross Internal Area = 568 sq ft / 52.8 sq m



Not to scale, for guidance only and must not be relied upon as a statement of fact
All measurements and areas are approximate only and have been prepared in
accordance with the current edition of the RICS Code of Measuring Practice

