



Cubitt Building, 10 Gatliff Road  
London SW1W

GARTON JONES.COM



# Cubitt Building, 10 Gatliff Road London, SW1W

GARTON JONES.COM

8 Gatliff Road  
Grosvenor  
Waterside  
Chelsea  
London  
SW1W 8DP

Sales +44 (0) 20 7730 5007  
gws@gartonjones.com  
www.gartonjones.com

## £785 Per Week

An very well-proportioned 1 DOUBLE BEDROOM apartment of approx. 650 sq.ft (60 sq.m) in Cubitt Building, one of the buildings forming the popular Grosvenor Waterside development that surrounds the historic Grosvenor Dock. This FURNISHED apartment overlooks the dock and further benefits from floor to ceiling windows, an open plan reception room, a smart fitted kitchen (with a worktop mounted dishwasher), 2 spacious balconies, a utility cupboard and wood flooring. 24 HOUR CONCIERGE, GYM & SPA. On-site Sainsbury's Local, coffee shop and private kids club. SLOANE SQUARE & VICTORIA station with Gatwick Express are within walking distance. Battersea Park is also just a short stroll away across Chelsea Bridge.

Available via Garton Jones' on-site office (underneath Bramah House).

Council Tax: Westminster Council (band E)

12 month minimum term. 5 week deposit.

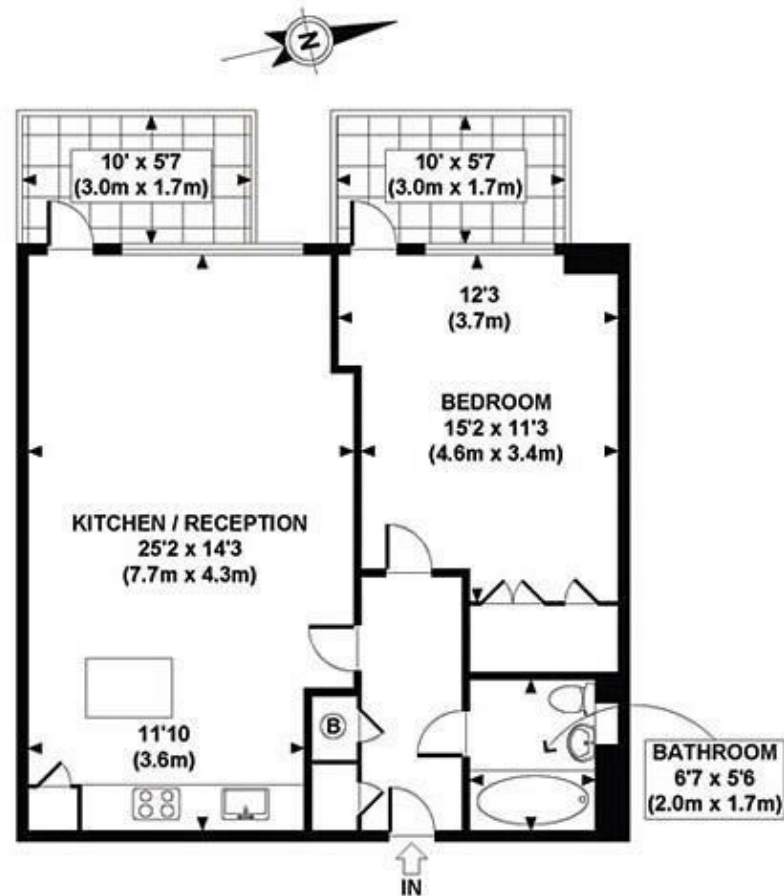
EPC Rating: B (81)

Please note that furniture may differ to that shown in the current photos.

EPC certificate available on request.

- 650 Sq.ft (60 Sq.m)
- 1 Double Bedroom Apartment
- Open Plan Reception Room
- Kitchen With Integrated Appliances
- Bathroom Suite
- 24 Hour Concierge Service
- 2 Dock Facing Balconies
- On-Site Residents' Gym & Spa Facilities
- On-Site Sainsbury's, Coffee Shop, Crèche & Purple Dragon Private Kids Club
- Within Walking Distance Of Sloane Square & Victoria Station





GROSS INTERNAL  
FLOOR AREA 650 SQ FT

APPROX. GROSS INTERNAL FLOOR AREA 650 SQ FT / 60 SQ M  
GCGJW - 131009 Copyright [photoplan.co.uk](http://photoplan.co.uk)

Floorplans are for identification and guideline purposes only, not to scale.  
Compliant with RICS code of measuring practice.

