



Cubitt Building, 10 Gatliff Road
London SW1W

GARTONJONES.COM



Cubitt Building, 10 Gatliff Road
London, SW1W

GARTON JONES.COM

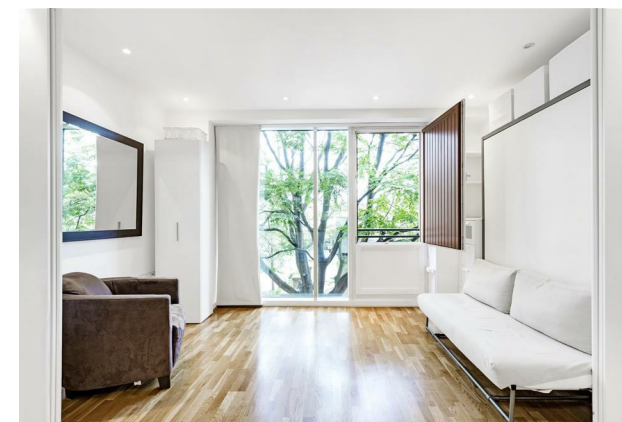
8 Gatliff Road
Grosvenor
Waterside
Chelsea
London
SW1W 8DP

Lettings:
+44 (0) 20 7730 5007
gws@gartonjones.com
www.gartonjones.com

£485 Per Week

IMMEDIATELY AVAILABLE. A FURNISHED studio apartment to rent of approx. 348 sq.ft (32 sq.m) in Cubitt Building, part of the popular Grosvenor Waterside development close to the banks of the River Thames in Chelsea. This furnished apartment has open plan living with an integrated kitchen, a wall mounted pull down double bed, good storage, a utility cupboard housing a washer dryer and a modern bathroom. Residents have the use of 24-HOUR CONCIERGE, GYM & SPA. On-site Sainsbury's Local, coffee shop and private kids club. SLOANE SQUARE & VICTORIA station with Gatwick Express are within walking distance.

- 348 Sq.ft (32 Sq.m)
- Studio Apartment
- Open Plan Living
- Modern Integrated Kitchen
- Bathroom
- Wood Flooring
- 24 Hour Concierge
- Residents Gym with Spa Facilities
- On-Site Sainsbury's, Coffee Shop & Bakery, Purple Dragon Private Kids Club & Crèche
- Walking Distance to Sloane Square and Victoria Station



Available via Garton Jones on-site office at Grosvenor Waterside (underneath Bramah House).

*Please note the furniture may differ or not be included to that shown in current photos.

12 month minimum term. 5 week deposit.

Council Tax: Westminster Council (band E)

EPC Rating: B (85)

Cubitt Building

Approximate Gross Internal Area = 348 sq ft / 32 sq m

