



Wolfe House, Kensington  
London W14

GARTON JONES.COM



# Wolfe House, Kensington London, W14

## £995 Per Week

IMMEDIATELY AVAILABLE. A TWO DOUBLE bedroom FURNISHED apartment of approx. 895 sq.ft (83.2 sq.m) in Wolfe House, part of the popular 375 Kensington High Street development. The apartment has a dual aspect open plan reception room with far reaching views across London, a kitchen with integrated Miele appliances, 2 luxury bathrooms (1 en-suite), a utility cupboard with washer dryer and ample storage including wardrobes to both bedrooms. There is PARKING, UNDERFLOOR HEATING and COMFORT COOLING. 24 HOUR CONCIERGE SERVICE, private cinema screening room, INDOOR SWIMMING POOL, GYM & SAUNA. Shops and restaurants and transport links are within walking distance.

Available via Garton Jones Chelsea & Belgravia office.

\*Please note furniture may differ to that shown in the current photos.

Council Tax: Kensington & Chelsea London Borough Council (band G).

12 month minimum term. 6 week deposit required.

EPC Rating: B (83)

EPC certificate available on request.

- 895 Sq.ft (83.2 Sq.m)
- 2 Double Bedrooms
- 2 Bathrooms (1 En-Suite)
- Open Plan Reception Room
- Kitchen With Miele Integrated Appliances
- Private Balcony
- 24 Hour Concierge
- Residents' Cinema, Gym, Swimming Pool & Spa Facilities
- Close to Local Shops, Bars & Restaurants
- Walking Distance To High Street Kensington

## GARTON JONES.COM

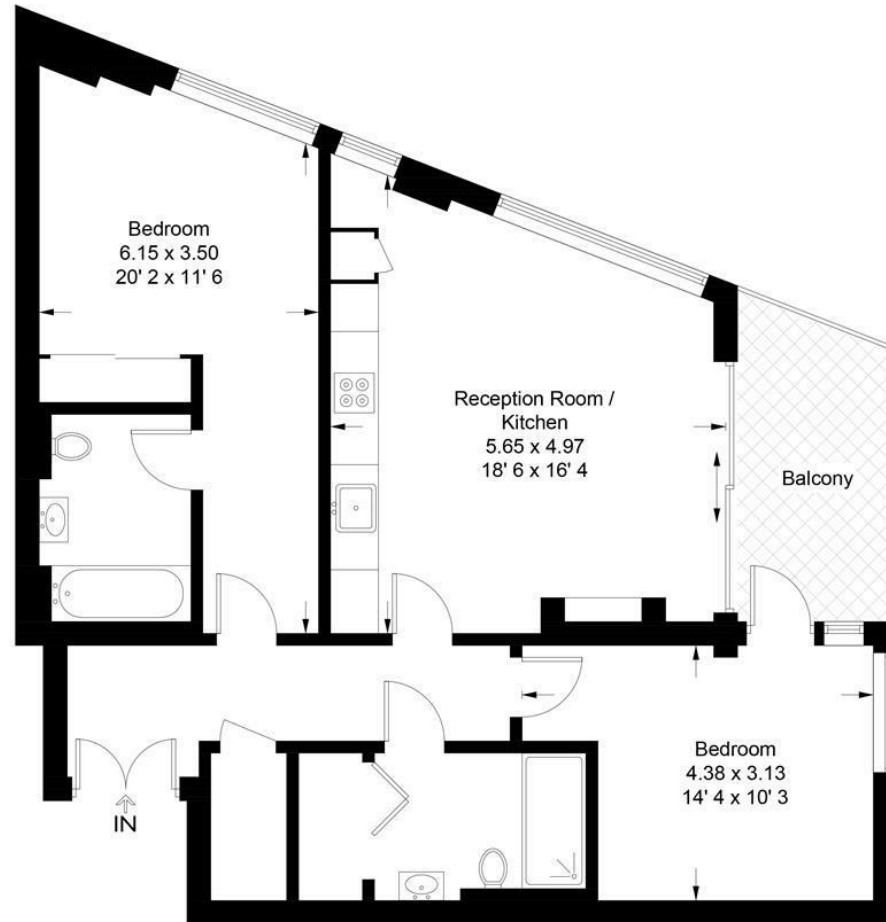
8 Gatliff Road  
Grosvenor  
Waterside  
Chelsea  
London  
SW1W 8DP

Sales +44 (0) 20 7730 5007  
gws@gartonjones.com  
www.gartonjones.com



**Wolfe House**

Approximate Gross Internal Area = 895 sq ft / 83.2 sq m



Not to scale, for guidance only and must not be relied upon as a statement of fact  
All measurements and areas are approximate only and have been prepared in  
accordance with the current edition of the RICS Code of Measuring Practice

