



Bramah House, 9 Gatliff Road  
London SW1W

GARTON JONES.COM



# Bramah House, 9 Gatliff Road London, SW1W

## £1,000 Per Week

GARTON JONES.COM

8 Gatliff Road  
Grosvenor  
Waterside  
Chelsea  
London  
SW1W 8DP

Sales +44 (0) 20 7730 5007  
gws@gartonjones.com  
www.gartonjones.com

A TWO DOUBLE BEDROOM apartment to rent of approx. 900 sq.ft (83.59 sq.m) in Bramah House, part of the popular Grosvenor Waterside development in Chelsea. This furnished property has an open plan reception room with access to TWO BALCONIES with DOCK FACING VIEWS. There is a smart kitchen with a breakfast bar and Gaggenau integrated appliances, storage including a utility cupboard housing a washing machine, solid wood flooring, 2 bathrooms (1 en-suite), air conditioning and ceiling mounted surround sound speakers. A SECURE UNDERGROUND PARKING space is also included. Residents also benefit from 24 HOUR CONCIERGE, GYM & SPA. On-site Sainsbury's Local, coffee shop and private kids club. SLOANE SQUARE & VICTORIA station with Gatwick Express are within walking distance. Battersea Park is also just a short walk away across Chelsea Bridge.

Available via Garton Jones on-site office at Grosvenor Waterside (underneath Bramah House).

\*Please note furniture may differ to that shown in the current photos.

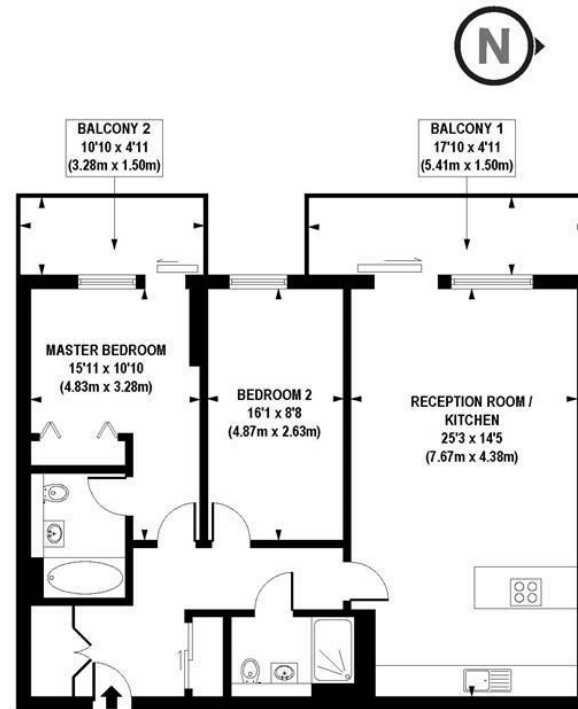
Council Tax: Westminster City Council (band F)

6 week security deposit required. 12 month minimum term.

EPC certificate available on request.

- Approx. 900 Sq.ft (83.59 Sq.m) & Furnished
- 2 Double Bedrooms
- Open Plan Reception Room
- Integrated Kitchen
- 2 Bathrooms (1 En-Suite)
- 2 Balconies With Dock Views
- Secure Underground Parking
- Residents' On-Site Gym, 24 Hour Concierge and Spa Facilities
- On-Site Sainsbury's, Coffee Shop, Crèche & Purple Dragon Private Kids Club
- Walking Distance To Sloane Square & Victoria Transport Links





APPROX. GROSS INTERNAL FLOOR AREA 900 sq. ft / 83.59 sq. m

Floorplan is for illustrative purposes only and is not to scale.  
Every attempt has been made to ensure the accuracy of the floorplan shown, however all measurements, fixtures, fittings and data shown are an approximate interpretation for illustrative purposes only.  
Liability for errors, omissions or mis-statement through negligence or otherwise is hereby excluded.

**CP CREATIVE**  
PROPERTY MARKETING



