



Kings Tower, Chelsea Creek
London SW6

GARTON JONES.COM



Kings Tower, Chelsea Creek London, SW6

£800 Per Week

Be the first tenant to occupy this BRAND NEW FURNISHED ONE BEDROOM apartment soon to be released in The Kings Tower which offers high quality accommodation with enviable high-class facilities. The 3rd floor apartment offers 685sqft/ 63.6sqm of elegant accommodation comprising of a spacious lounge and balcony, double bedroom with built in wardrobe, bathroom, and ample storage space. The Kings Tower is a stunning building offering two resident cinema's, lounge area and roof top terrace and sky lounge on the 32nd floor, as well as access to the spa with fully equipped gym, swimming pool, sauna & steam room. Chelsea Creek is a unique dockside development within easy reach of Imperial wharf overground station (0.1mile) as well as Fulham Broadway Tube line, District Line (0.6mile) and the stylish King's Road and Chelsea Harbour, with its many restaurants, bars and boutiques.

5 Weeks Security Deposit
12 Month Tenancy
Council Tax — London Borough Of
Hammersmith & Fulham — Band TBC

EPC B (84)

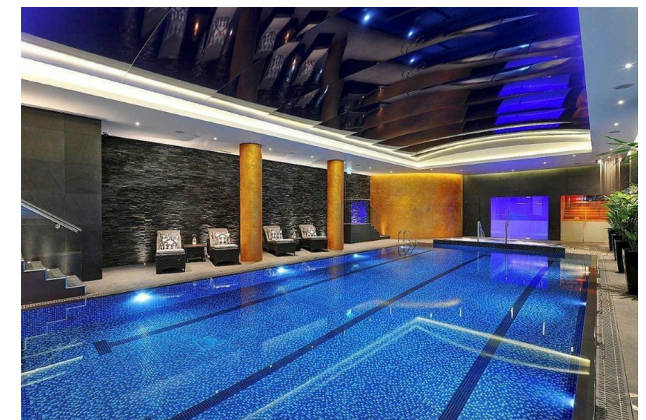
EPC certificate available on request.

- Brand New Apartment
- One Bedroom
- 685sqft (63.6sqm)
- Furnished
- 3rd Floor
- Balcony
- Residents Sky Roof Terrace & Lounge At The Halcyon Club, Residents Cinema & Business Lounge
- 24 Hour Concierge
- Fitness Centre, Indoor Pool, Sauna & Steam Room, Gymnasium
- EPC B (84)

GARTON JONES.COM

8 Gatliff Road
Grosvenor
Waterside
Chelsea
London
SW1W 8DP

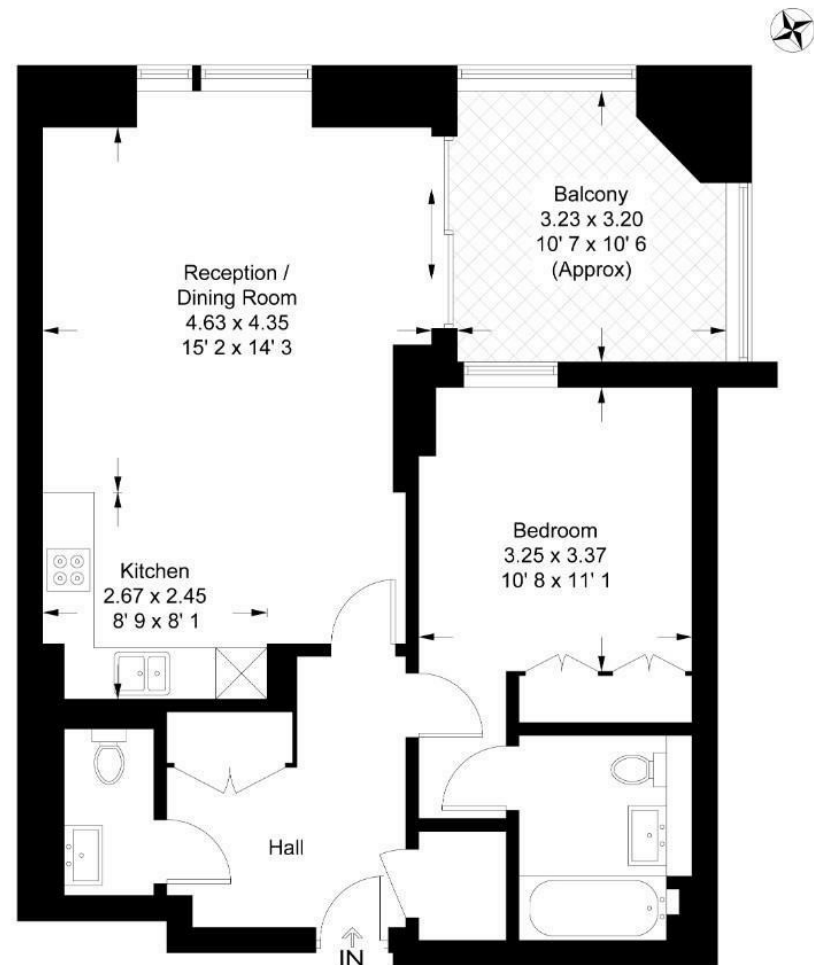
Sales +44 (0) 20 7730 5007
gws@gartonjones.com
www.gartonjones.com



Kings Tower

Approximate Gross Internal Area = 685 sq ft / 63.7 sq m
 Balcony = 108 sq ft / 10.1 sq m

GARTON JONES
 LONDON



This plan is not to scale and must be used as layout guidance only. All measurements and areas are approximate and should not be relied upon to provide accurate information. This plan must not be relied upon when making property valuations, design considerations or any other such relevant decisions. We accept no responsibility or liability (whether in contract, tort or otherwise) in relation to any loss whatsoever arising from or in connection with any use of this plan or the adequacy, accuracy or completeness of it or any information within it.



