



Charles House, Kensington
London W14

GARTON JONES.COM



Charles House, Kensington London, W14

£1,200,000 Leasehold

A beautifully presented, bright and spacious one DOUBLE BEDROOM apartment of approx. 773 sq.ft (71.84sq.m) for sale in Charles House, Kensington High Street. The apartment has an OPEN PLAN reception room with ENCLOSED BALCONY and a modern kitchen with Miele integrated appliances. The double bedroom has a walk-in dressing area plus there is a luxury bathroom, comfort cooling, wood flooring, under floor heating and good storage. There is also a secure underground parking space. Residents will also have the use of a 24 hour concierge service, an on-site leisure suite (which includes an indoor swimming pool, gym, sauna, steam room and cinema) and beautiful landscaped gardens. Charles House is located within easy reach of the transport links High Street Kensington, Olympia and Earls Court, as well as the many local amenities including shops and restaurants.

Available via Garton Jones Chelsea & Belgravia.

Council Tax: Band G - Royal Borough of Kensington & Chelsea

Service Charges: £8,072.00 per annum

Ground Rent: £776.00 per annum

Lease: 999 years from 1st January 2011 (expires circa 3010)

EWS1 completed

EPC Rating: B (85)

EPC certificate available on request.

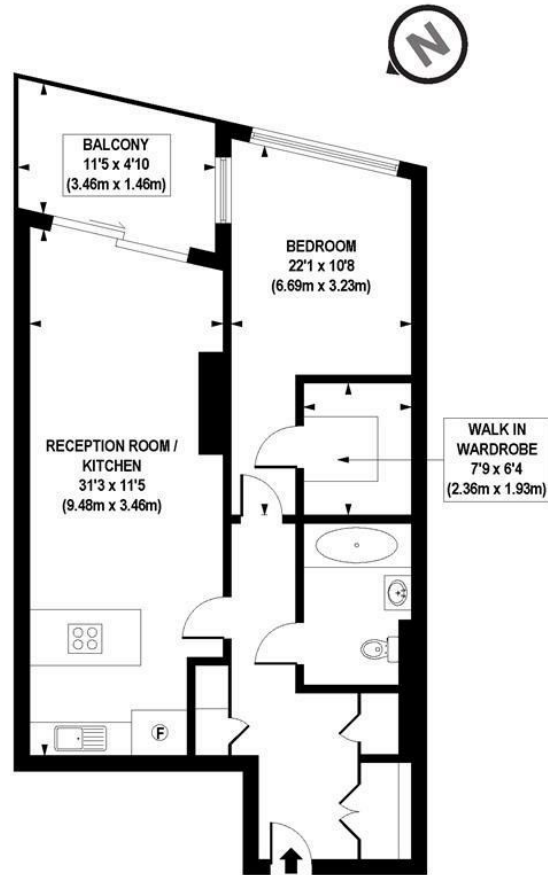
- 773 Sq.ft (71.84 Sq.m)
- 1 Double Bedroom
- Open Plan Reception Room
- Integrated Kitchen
- Luxury Bathroom
- 24 Hour Concierge
- Enclosed Private Balcony
- Access To Private Cinema Screening Room & Leisure Suite With Indoor Swimming Pool, Gym and Sauna
- Amenities Close By Including Shops & Restaurants
- Excellent Transport Links Within Walking Distance

GARTON JONES.COM

8 Gatliff Road
Grosvenor
Waterside
Chelsea
London
SW1W 8DP

Sales +44 (0) 20 7730 5007
gws@gartonjones.com
www.gartonjones.com





APPROX. GROSS INTERNAL FLOOR AREA 773 sq. ft / 71.84 sq. m

Floorplan is for illustrative purposes only and is not to scale.
Every attempt has been made to ensure the accuracy of the floorplan shown, however all measurements, fixtures, fittings and data shown are an approximate interpretation for illustrative purposes only.
Liability for errors, omissions or mis-statement through negligence or otherwise is hereby excluded.

