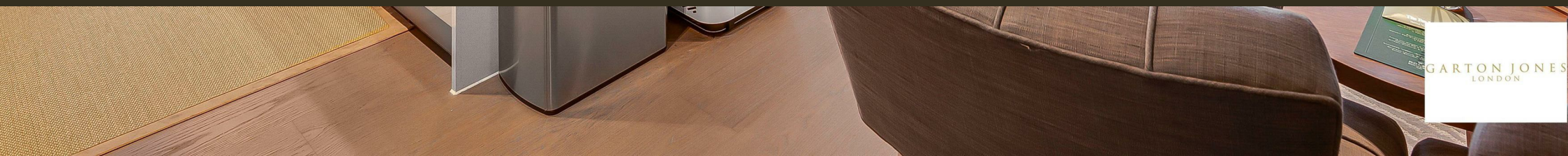




Bridgeman House, 1 Radnor Terrace  
London W14

GARTON JONES.COM



GARTON JONES  
LONDON

# Bridgeman House, 1 Radnor Terrace London, W14

## £1,845 Per Week

A TWO DOUBLE BEDROOM apartment of approx. 989 sq.ft (91.9 sq.m) located in Bridgeman House at 375 Kensington High Street. This FURNISHED apartment has a dual aspect open plan reception room with a modern kitchen with integrated appliances. There are 2 luxury bathrooms (1 en-suite), a BALCONY, a utility cupboard and storage including wardrobes to both bedrooms. There is a SECURE PARKING space, underfloor heating and comfort cooling. The development provides a 24 hour concierge service, a private cinema screening room and a leisure suite with a swimming pool, gym and sauna. There are also plenty of amenities close by including shops and restaurants. Transport links are excellent with rail, bus and taxi services all within walking distance.

Available via Garton Jones Chelsea & Belgravia (based on-site at Grosvenor Waterside).

Please note furniture may differ to that show in the current photos.

Royal Borough of Kensington & Chelsea Council (band G).

12 month minimum term. 6 week deposit required.

EPC Rating: B (84)

EPC certificate available on request.

- 989 Sq.ft (91.9 Sq.m)
- 2 Double Bedroom Apartment
- Open Plan Reception Area
- Kitchen With Integrated Appliances
- 2 Luxury Bathrooms (1 En-Suite)
- 24 Hour Concierge Service
- Secure Underground Parking Space
- Excellent Transport Links
- Residents Have Access To A Private Cinema Screening Room & A Leisure Suite With A Swimming Pool, Gym & Sauna
- Close To Local Amenities Such As Shops, Bars & Restaurants

## GARTON JONES.COM

8 Gatliff Road  
Grosvenor  
Waterside  
Chelsea  
London  
SW1W 8DP

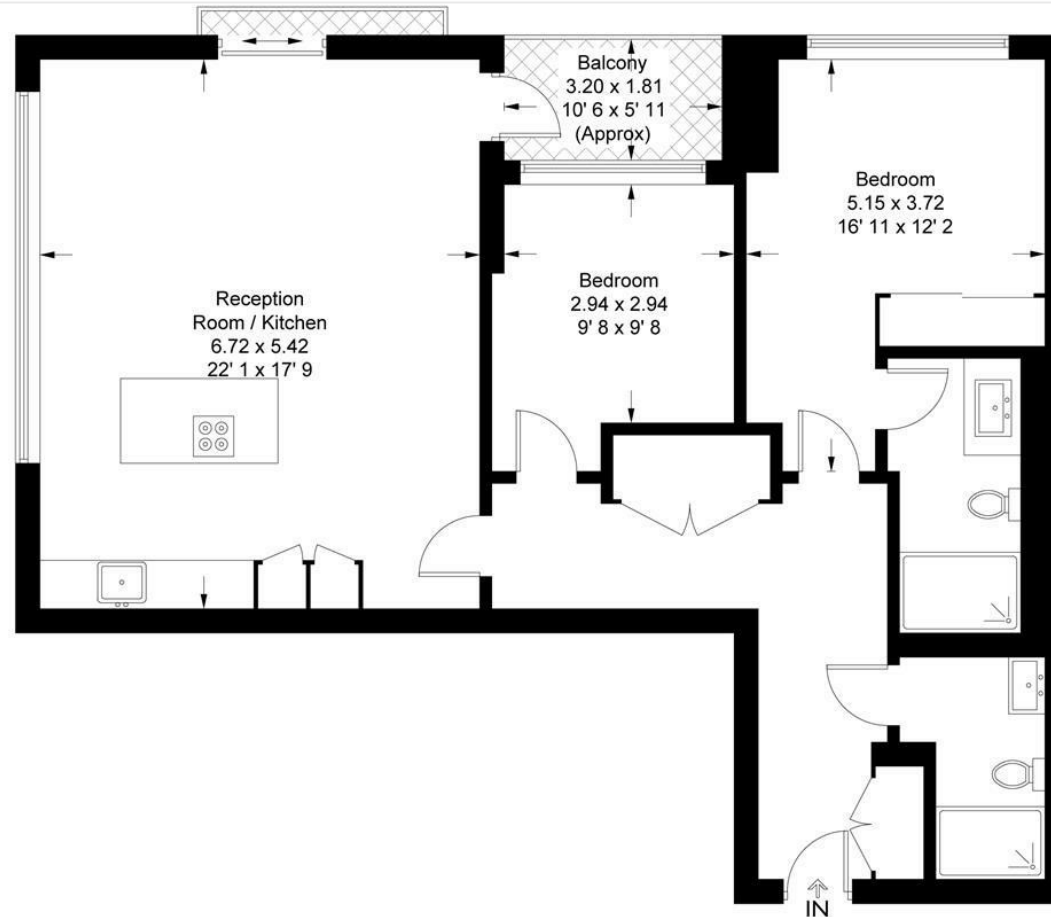
Sales +44 (0) 20 7730 5007  
gws@gartonjones.com  
www.gartonjones.com



## Bridgeman House

Approximate Gross Internal Area = 989 sq ft / 91.9 sq m  
Balcony = 62 sq ft / 5.8 sq m

GARTON JONES  
LONDON



This plan is not to scale and must be used as layout guidance only. All measurements and areas are approximate and should not be relied upon to provide accurate information. This plan must not be relied upon when making property valuations, design considerations or any other such relevant decisions. We accept no responsibility or liability (whether in contract, tort or otherwise) in relation to any loss whatsoever arising from or in connection with any use of this plan or the adequacy, accuracy or completeness of it or any information within it.



