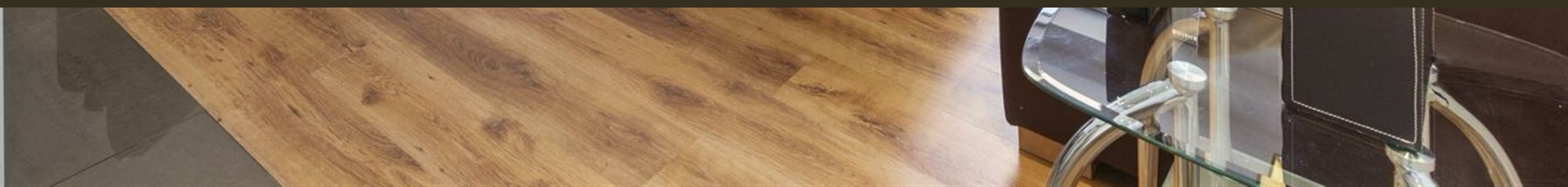




Cubitt Building, 10 Gatliff Road
London SW1W

GARTON JONES.COM



Cubitt Building, 10 Gatliff Road
London, SW1W

GARTON JONES.COM

8 Gatliff Road
Grosvenor
Waterside
Chelsea
London
SW1W 8DP

Sales +44 (0) 20 7730 5007
gws@gartonjones.com
www.gartonjones.com

£775 Per Week

A well presented ONE DOUBLE BEDROOM apartment to rent of approx. 644 sq.ft(60 sq.m) in Grosvenor Waterside development in Chelsea. This FURNISHED apartment has a DOCK FACING ASPECT with partial views of the river. There is an open plan reception room, modern integrated kitchen, built in wardrobes to the bedroom, utility cupboard housing washing machine. 24 HOUR CONCIERGE, GYM & SPA. On-site Sainsbury's Local, coffee shop and private kids club. SLOANE SQUARE & VICTORIA station with Gatwick Express are within walking distance.

- 644 Sq.ft (60 Sq.m)
- 1 Double Bedroom
- Open Plan Reception Room
- Integrated Kitchen
- Modern Bathroom
- 24 Hour Concierge
- Dock Facing Aspect with Partial Views of the River Thames
- On-Site Sainsbury's, Coffee Shop & Bakery, Purple Dragon Private Kids Club & Crèche
- Close to Local Shops and Amenities
- Walking Distance to Sloane Square and Victoria Station



Available via Garton Jones' on-site office at Grosvenor Waterside (underneath Bramah House).

Please note furniture may differ to that shown in the current photos.

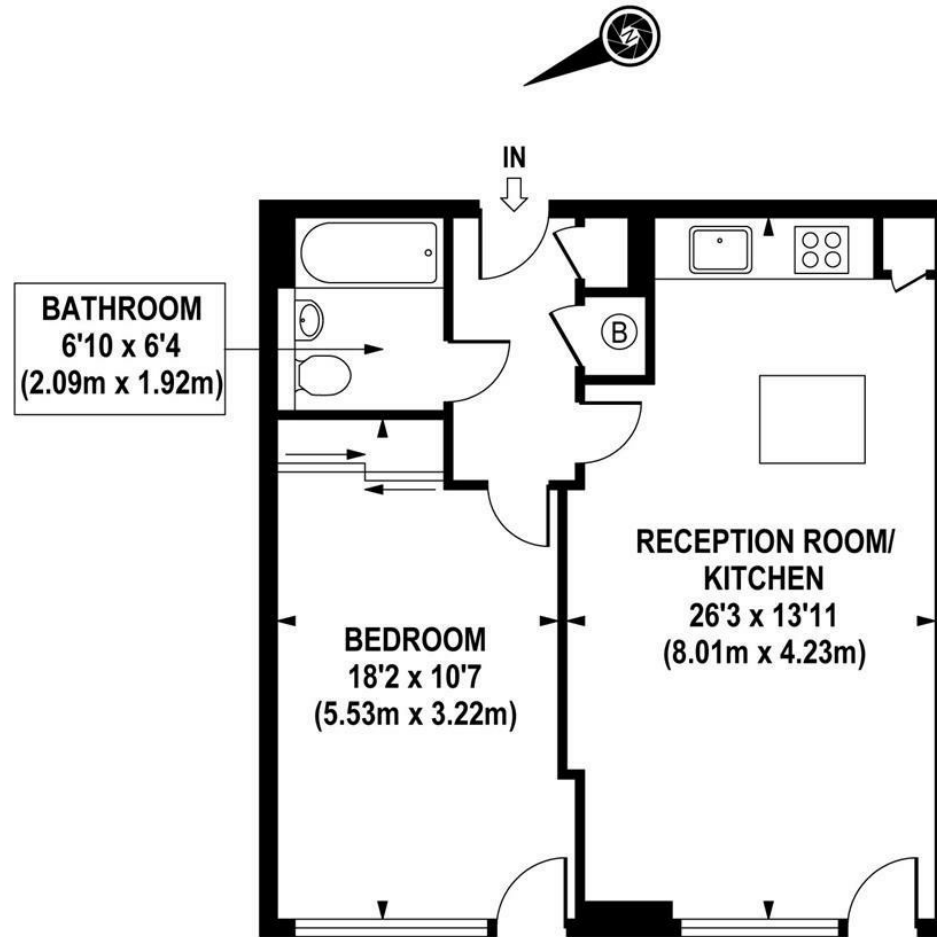
5 week deposit. 12 month minimum term.

EPC rating: B (83)

Council Tax: Westminster Council (band E).

EPC certificate available on request.





THIRD FLOOR

APPROX. GROSS INTERNAL AREA 644 sq.ft / 59.84 sq.m

