



93 Ebury Bridge Road, Chelsea
London SW1W

GARTONJONES.COM



93 Ebury Bridge Road, Chelsea
London, SW1W

£945 Per Week

A spacious TWO DOUBLE BEDROOM apartment to rent of approx. 928sq.ft (86sq.m). The development is located close to the River Thames and Chelsea Bridge. This FURNISHED property has a large dual aspect reception room, a separate kitchen, a BALCONY, TWO BATHROOMS (one en-suite) and built in wardrobes to both bedrooms. SECURE PARKING, 24 HOUR CONCEIRGE and GYM. Available via our on-site office at Grosvenor Waterside (underneath Bramah House, approx. a 2 minute walk from the property) with on-site Sainsbury's Local, coffee shop, and private kids club. SLOANE SQUARE and VICTORIA station with link to the Gatwick Express are within walking distance. Please note furniture may differ or not be included to that shown in the current photos.

Council Tax: Westminster City Council (band G).

12 month minimum term. 5 week deposit required.

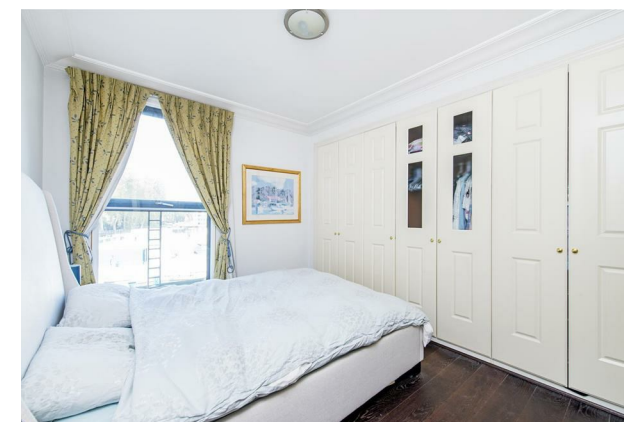
EPC Rating: 84 (B)

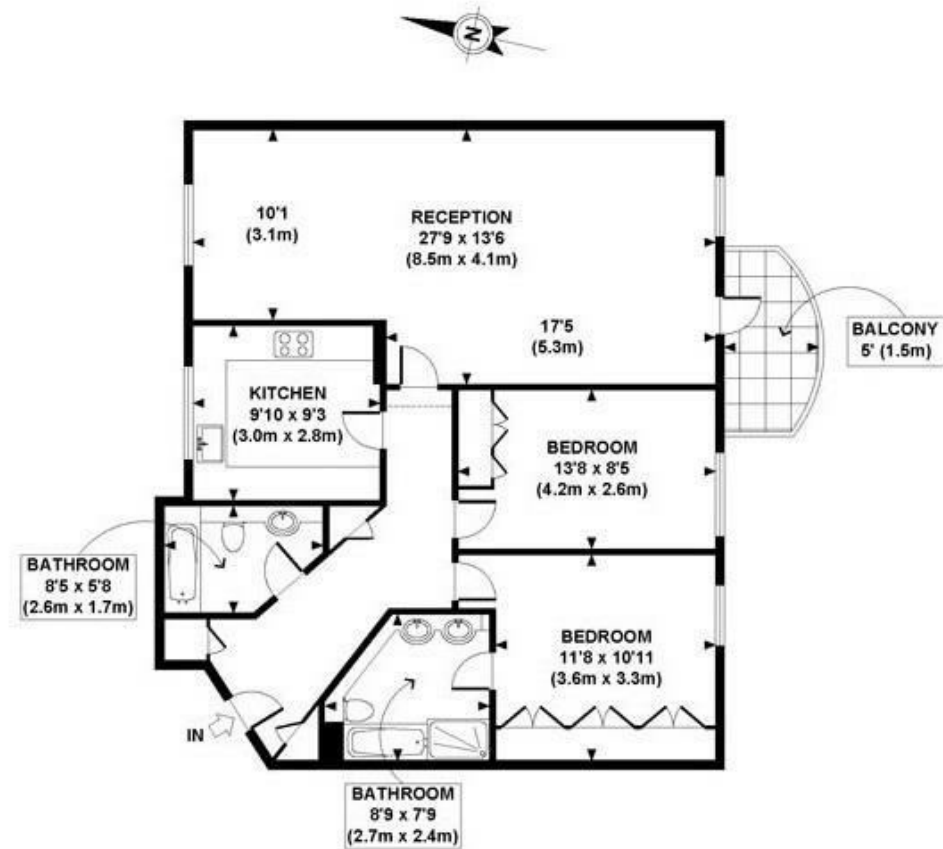
- 928 Sq.ft (86 Sq.m)
- 2 Double Bedrooms
- Large Dual Aspect Reception Room
- Separate Kitchen
- 2 Bathrooms (1 En-Suite)
- 24 Hour Concierge
- Balcony
- On-Site Gym
- Within Walking Distance Of Sloane Square & Victoria Train Station

GARTON JONES.COM

8 Gatliff Road
Grosvenor
Waterside
Chelsea
London
SW1W 8DP

Lettings:
+44 (0) 20 7730 5007
gws@gartonjones.com
www.gartonjones.com





SECOND FLOOR
GROSS INTERNAL
FLOOR AREA 928 SQ FT

APPROX. GROSS INTERNAL FLOOR AREA 928 SQ FT / 86 SQ M

