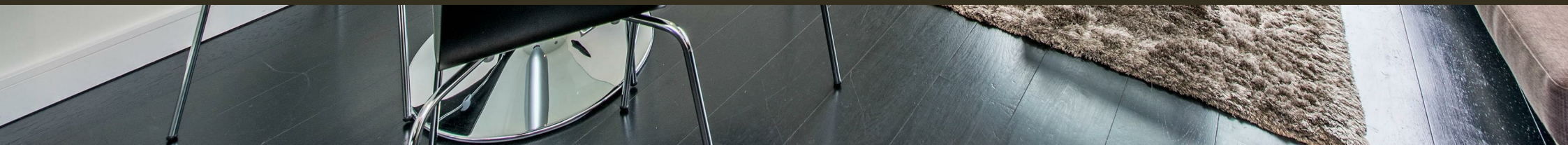




Caro Point, 5 Gatliff Road
London SW1W

GARTONJONES.COM



Caro Point, 5 Gatliff Road
London, SW1W

£745 Per Week

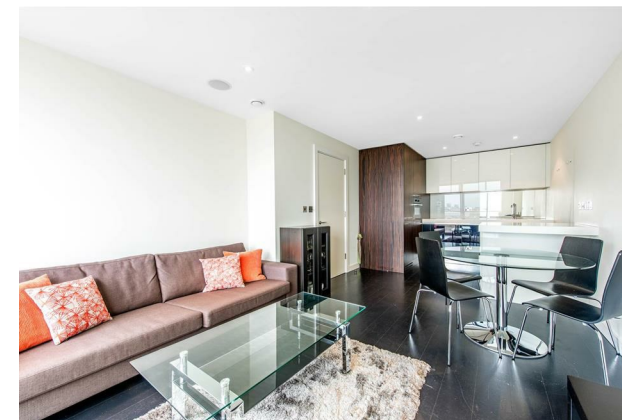
GARTON JONES.COM

8 Gatliff Road
Grosvenor
Waterside
Chelsea
London
SW1W 8DP

Lettings:
+44 (0) 20 7730 5007
gws@gartonjones.com
www.gartonjones.com

A bright 1 double bedroom apartment to rent of approx. 525sq.ft (48.8sq.m) in Caro Point, part of the popular Grosvenor Waterside development in Chelsea. This furnished property further benefits from an open plan reception room with full width floor to ceiling windows accessing a balcony enjoying far reaching views of the London skyline taking in many iconic landmarks. There is an integrated kitchen with Miele appliances, a luxury bathroom suite, dark wood flooring, a utility cupboard with an AEG washing dryer and good storage including fitted wardrobes to the bedroom. 24 HOUR CONCIERGE, GYM and SPA. On-site Sainsbury's Local, coffee shop and private kids club. SLOANE SQUARE and VICTORIA station with Gatwick Express are within walking distance.

- 525 Sq.ft (48.8 Sq.m)
- 1 Double Bedroom
- Open Plan Reception Room
- Kitchen With Integrated Miele Appliances
- Luxury Bathroom Suite
- Balcony With Far Reaching Views Of The London Skyline
- 24 Hour Concierge
- Residents Leisure Suite With Gym & Spa Facilities
- On-Site Sainsbury's, Coffee Shop, Private Kids Club & Crèche
- Walking Distance To The Shops, Restaurants & Transport Links of Sloane Square & Victoria



Available via Garton Jones' on-site office at Grosvenor Waterside (underneath Bramah House).

Please note furniture may differ to that shown in the current photos.

Council Tax: Westminster City Council (Band E)

EPC Rating:

12 month minimum term. 5 week deposit required.

Caro Point

Approximate Gross Internal Area = 525 sq ft / 48.8 sq m

