



Hepworth Court, 30 Gatliff Road
London SW1W

GARTON JONES.COM



Hepworth Court, 30 Gatliff Road London, SW1W

GARTON JONES.COM

8 Gatliff Road
Grosvenor
Waterside
Chelsea
London
SW1W 8DP

Sales +44 (0) 20 7730 5007
gws@gartonjones.com
www.gartonjones.com

£660 Per Week

A ONE DOUBLE BEDROOM apartment to rent of approx. 504 sq.ft (47sq.m) in Hepworth Court, Grosvenor Waterside, located close to the banks of the River Thames by Chelsea Bridge. This FURNISHED apartment has an open plan reception room with access to a private balcony with dock views, a modern fitted kitchen with integrated appliances and a luxury bathroom. There is wood flooring, comfort cooling, good storage including a utility cupboard housing a washer dryer and fitted wardrobes. Residents have the use of 24-HOUR CONCIERGE, GYM & SPA. On-site Sainsbury's Local, coffee shop and private kids club. SLOANE SQUARE & VICTORIA station with Gatwick Express are within walking distance.

- 504 Sq.ft (46.8 Sq.m)
- 1 Bedroom Apartment
- Open Plan Reception Room
- Integrated Kitchen
- Modern Bathroom
- 24 Hour Concierge
- Private Balcony
- Comfort Cooling
- On-Site Sainsbury's, Crèche, Coffee Shop & Private Kids club
- Walking Distance to Sloane Square & Victoria



Available via Garton Jones on-site office at Grosvenor Waterside (underneath Bramah House).

Please note the furniture may differ or not be included to that shown in current photos and an allocated parking space may be available by separate negotiation.

Council Tax: Westminster City Council (band E).

12 month minimum term. 5 week deposit required.

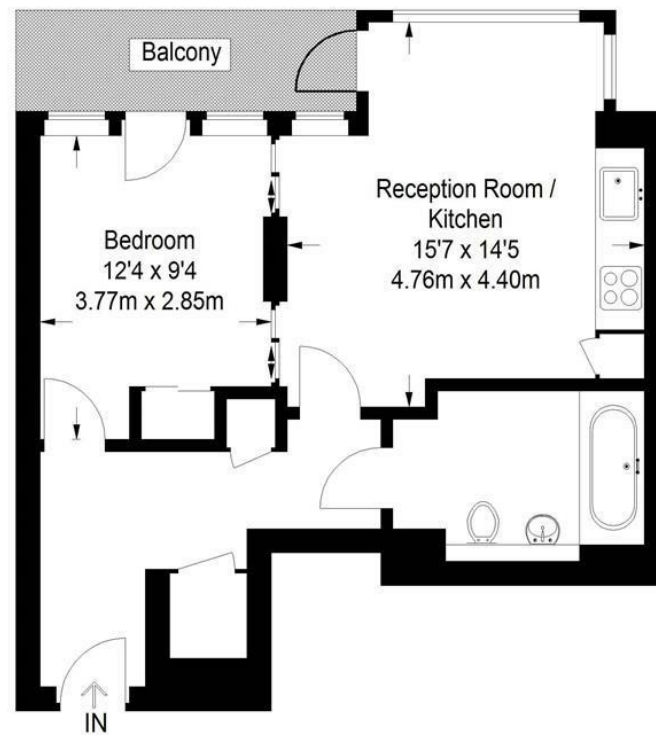
EPC Rating: C (76)

EPC certificate available on request.



Hepworth Court

Approximate Gross Internal Area
504 sq ft / 46.8 sq m



Third Floor

