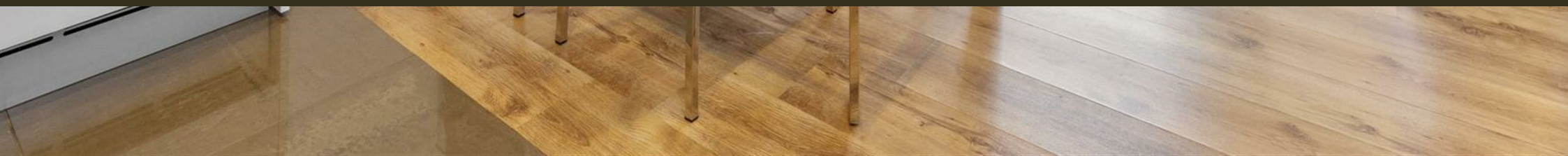




Cubitt Building, 10 Gatliff Road  
London SW1W

GARTON JONES.COM



# Cubitt Building, 10 Gatliff Road London, SW1W

## £775 Per Week

A ONE DOUBLE bedroom apartment to rent of approx. 577sq.ft (54 sq.m) in Cubitt Building at Grosvenor Waterside, close to Chelsea Bridge. The apartment is FURNISHED and was recently re-decorated. There is an open plan reception room with integrated kitchen, wood flooring and a luxury bathroom suite. 24 HOUR CONCIERGE, GYM & SPA. On-site Sainsbury's Local, coffee shop and private kids club. SLOANE SQUARE & VICTORIA station with Gatwick Express are within walking distance.

Available via Garton Jones on-site office at Grosvenor Waterside (underneath Bramah House).

Please note furniture may differ to that shown in the current photos.

Council Tax: Westminster Council (band E).

12 month minimum term. 5 week deposit required.

EPC Rating: B (84)

EPC certificate available on request.

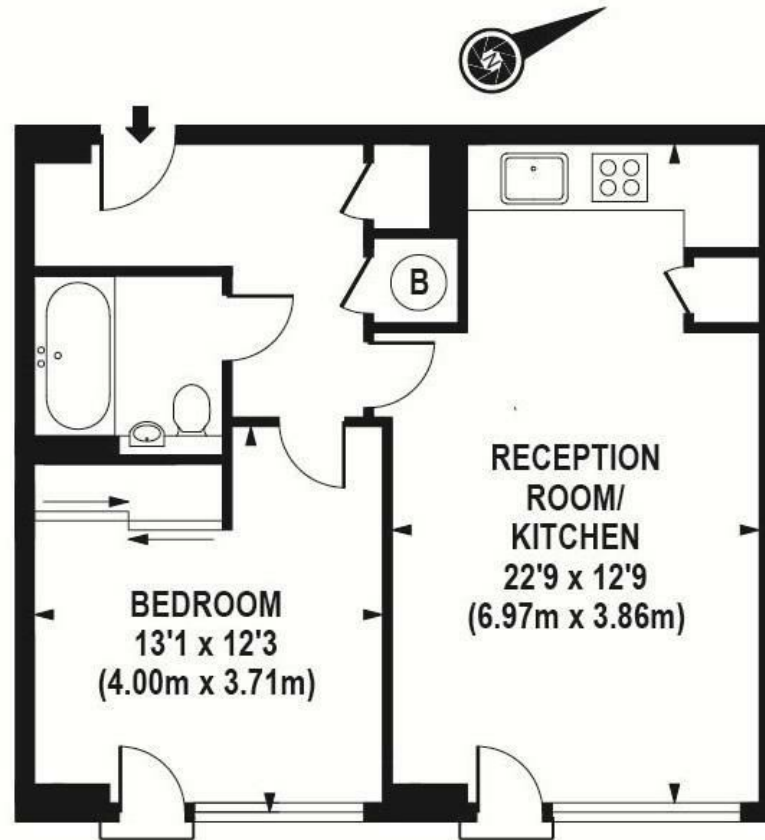
- 577 Sq.ft (54 Sq.m)
- 1 Double Bedroom
- Open Plan Reception Room
- Integrated Kitchen
- Luxury Bathroom Suite
- 24 Hour Concierge
- On-Site Residents' Gym & Spa Facilities
- On-Site Sainsbury's Local, Coffee Shop, Crèche and Private Kids' Club
- Close to Sloane Square and Victoria Stations

## GARTON JONES.COM

8 Gatliff Road  
Grosvenor  
Waterside  
Chelsea  
London  
SW1W 8DP

Sales +44 (0) 20 7730 5007  
gws@gartonjones.com  
www.gartonjones.com





APPROX. GROSS INTERNAL AREA 577 sq.ft / 53.60 sq.m

---



