



Hepworth Court, 30 Gatliff Road  
London SW1W

GARTON JONES.COM



# Hepworth Court, 30 Gatliff Road London, SW1W

GARTON JONES.COM

8 Gatliff Road  
Grosvenor  
Waterside  
Chelsea  
London  
SW1W 8DP

Sales +44 (0) 20 7730 5007  
gws@gartonjones.com  
www.gartonjones.com

## £760 Per Week

A bright and spacious ONE DOUBLE BEDROOM apartment to rent of approx. 632 sq.ft (58.75 sq.m) in Hepworth Court, Grosvenor Waterside development by Chelsea Bridge. The property has an open plan reception room with access to a PRIVATE BALCONY. There is a fitted kitchen with integrated appliances, a modern bathroom, fitted wardrobes to the bedroom, comfort cooling, recently installed wood flooring and a utility cupboard housing a washing machine. \*Parking by separate negotiation. Residents have the use of 24 HOUR CONCIERGE, GYM and SPA. On-site Sainsbury's Local, coffee shop and private kids club. SLOANE SQUARE and VICTORIA station with Gatwick Express are within walking distance. Battersea Park is also just a short stroll away across Chelsea Bridge.

- 632 Sq.ft (58.75 Sq.m)
- One Double Bedroom
- Open Plan Reception Room with Integrated Kitchen
- \*Parking available by separate negotiation.
- Modern Bathroom
- 24 Hour Concierge
- Private Balcony
- Residents' Gym with Spa Facilities
- On-Site Sainsbury's, The Locals Coffee Shop & Bakery, Big Horizons Nursery & Purple Dragon Private Kids Club
- Walking Distance To Sloane Square & Victoria Train Station



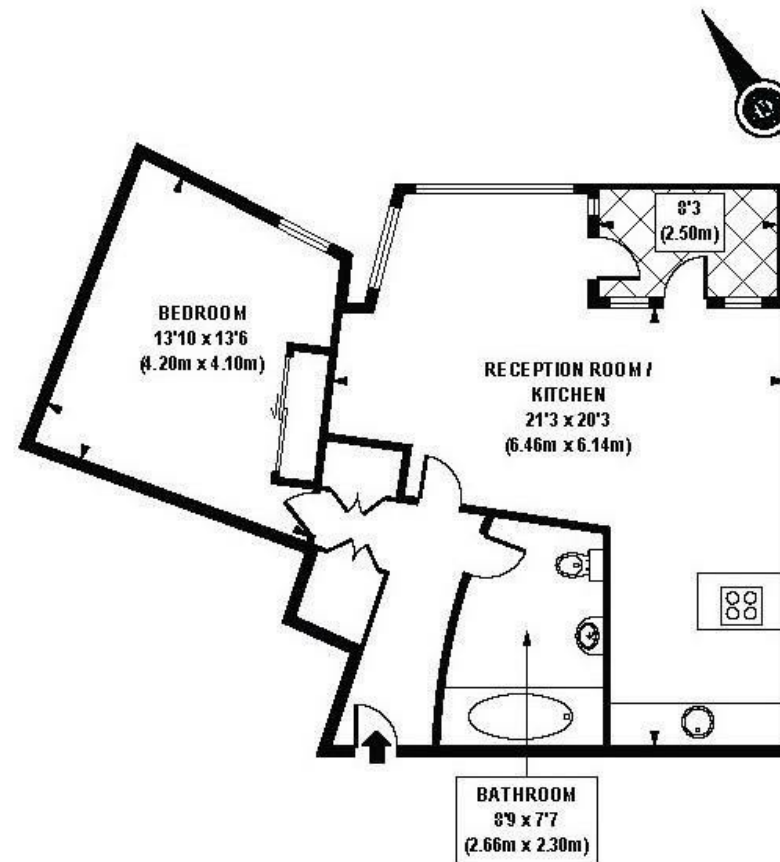
Please note the furniture is NOT included however a furniture package may be negotiated.

12 month minimum term. 5 week deposit required.

EPC Rating: B (83)

Council Tax: Westminster Council (band E)

EPC certificate available on request.



APPROX. GROSS INTERNAL FLOOR AREA 632 sq. ft / 58.75 sq. m



