



Caro Point, 5 Gatliff Road
London SW1W

GARTONJONES.COM



Caro Point, 5 Gatliff Road London, SW1W

£735 Per Week

GARTON JONES.COM

8 Gatliff Road
Grosvenor
Waterside
Chelsea
London
SW1W 8DP

Lettings:
+44 (0) 20 7730 5007
gws@gartonjones.com
www.gartonjones.com

A well-presented One DOUBLE BEDROOM apartment to rent of approx. 529sq.ft (49sq.m) in Caro Point, Grosvenor Waterside development in Chelsea. This FURNISHED apartment further comprises of an open plan reception room with full width floor to ceiling windows, there is an integrated kitchen, a luxury bathroom storage including a utility cupboard housing a washing machine, fitted wardrobes to the bedroom and a coat cupboard in the entrance. Residents will have the use of a 24 hour concierge service, a leisure suite with a well-equipped gym and spa facilities. Available via our office on-site here at Grosvenor Waterside (underneath Bramah House). There is also an on-site Sainsbury's Local, a coffee shop, crèche and Purple Dragon private kids club. The additional amenities including shops, restaurants of both Sloane Square and Victoria with its excellent transport links and Gatwick Express are within walking distance.

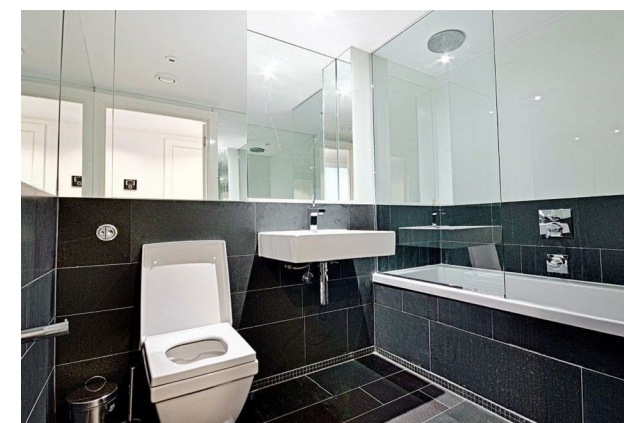
*Please note furniture may differ to that shown in the current photos

12 month minimum term. 5 week deposit required.

Council Tax: Westminster City Council (band E)

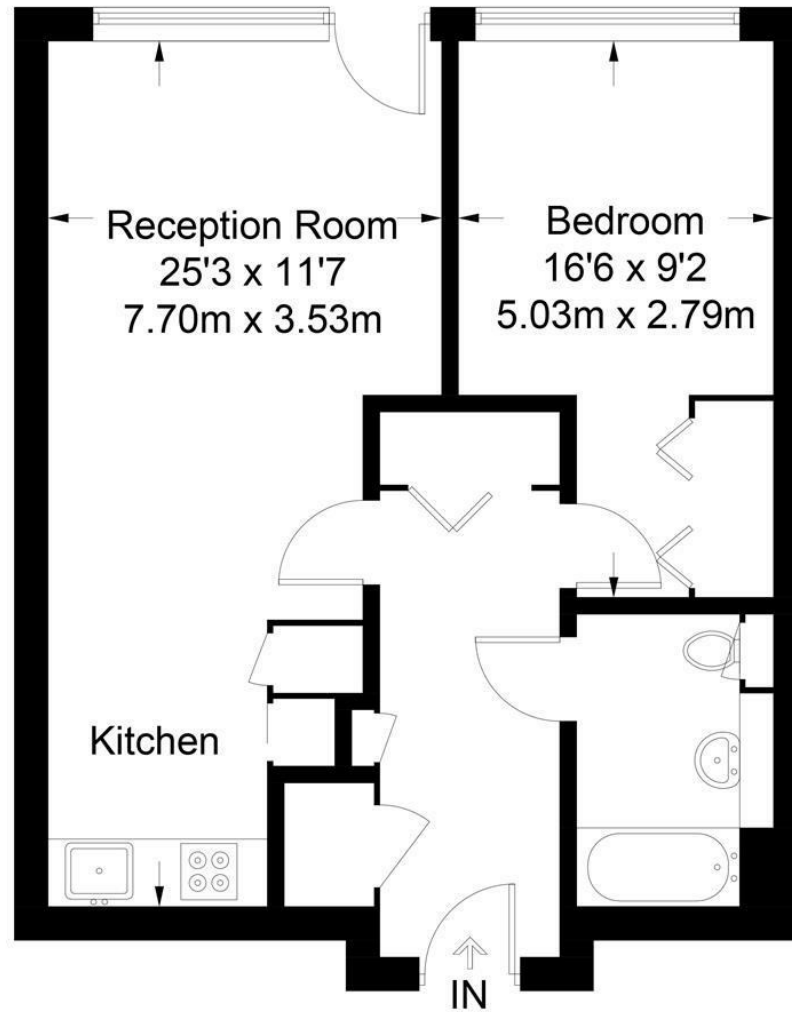
EPC Rating: C (73)

- 529sq.ft (49sq.m)
- 1 Double Bedroom
- Open Plan Reception Room
- Kitchen with Miele Integrated Appliances
- Modern Bathroom
- 24 Hour Concierge
- Furnished
- Residents Leisure Suite with Gym, Indoor Swimming Pool & Spa Facilities
- On-Site Sainsbury's, The Locals Coffee Shop & Bakery, Big Horizons Crèche & Purple Dragon Private Kids Club
- Walking Distance to Sloane Square & Victoria Station



Caro Point

Approximate Gross Internal Area = 529 sq ft / 49.0 sq m



Fifth Floor

