



Cubitt Building, 10 Gatliff Road  
London SW1W

GARTON JONES.COM



# Cubitt Building, 10 Gatliff Road London, SW1W

## £695 Per Week

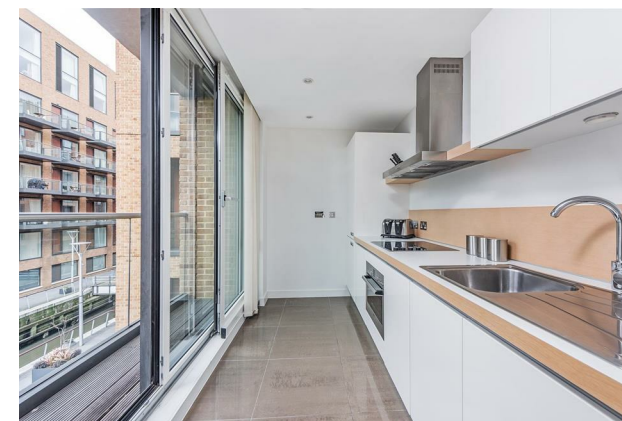
## GARTON JONES.COM

8 Gatliff Road  
Grosvenor  
Waterside  
Chelsea  
London  
SW1W 8DP

Lettings:  
+44 (0) 20 7730 5007  
gws@gartonjones.com  
www.gartonjones.com

IMMEDIATELY AVAILABLE. A bright and spacious ONE DOUBLE BEDROOM apartment to rent of approx. 658sq.ft (61sq.m) on Grosvenor Waterside, located close to the banks of the River Thames by Chelsea Bridge. This well-presented apartment has an open plan reception room with integrated kitchen and access to a private balcony with dock views. There is a dressing area to the bedroom and wood flooring. Residents have the use of 24-HOUR CONCIERGE, GYM & SPA. On-site Sainsbury's Local, coffee shop and private kids club. SLOANE SQUARE & VICTORIA station with Gatwick Express are within walking distance. Battersea Park is also a short stroll away over Chelsea Bridge.

- IMMEDIATELY AVAILABLE
- 658 Sq.ft (61 Sq.m)
- 1 Double Bedroom
- Open Plan Reception Room
- Modern Integrated Kitchen
- 24 Hour Concierge
- Balcony With Dock Views
- Residents Suite With Gym & Spa Facilities
- On-Site Sainsbury's, The Locals Coffee Shop & Bakery, Big Horizons Crèche & Purple Dragon Private Kids' Club
- Walking Distance To Sloane Square & Victoria Transport Links & Amenities



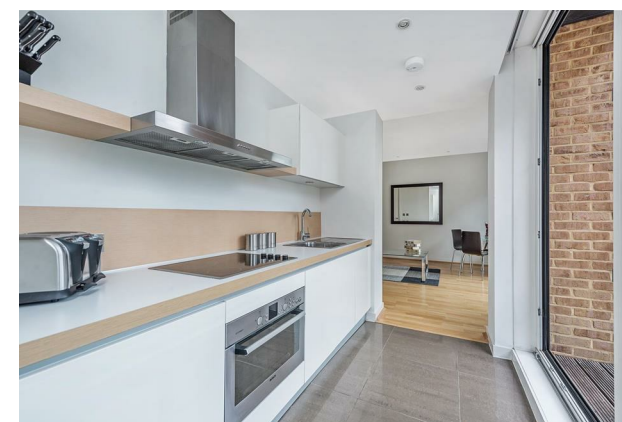
Available via Garton Jones' on-site office at Grosvenor Waterside (underneath Bramah House).

\*Please note furniture may differ or not be included to that shown in the current photos.

12 month minimum term. 5 week deposit required.

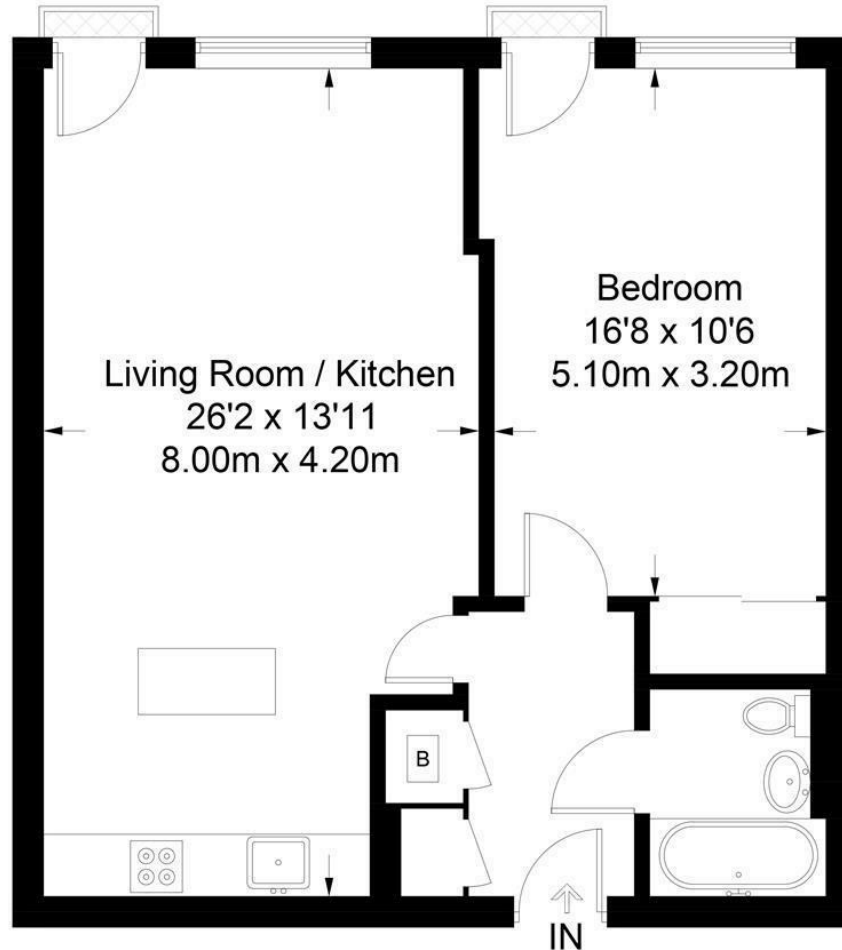
Westminster Council (band E).

EPC Rating: C (75)



**Cubitt Building**

Approximate Gross Internal Area = 658 sq ft / 61 sq m



Not to scale, for guidance only and must not be relied upon as a statement of fact.  
All measurements and areas are approximate only and have been prepared in accordance with the current edition of the RICS Code of Measuring Practice.

