



Cubitt Building, 10 Gatliff Road
London SW1W

GARTON JONES.COM



Cubitt Building, 10 Gatliff Road
London, SW1W

£715 Per Week

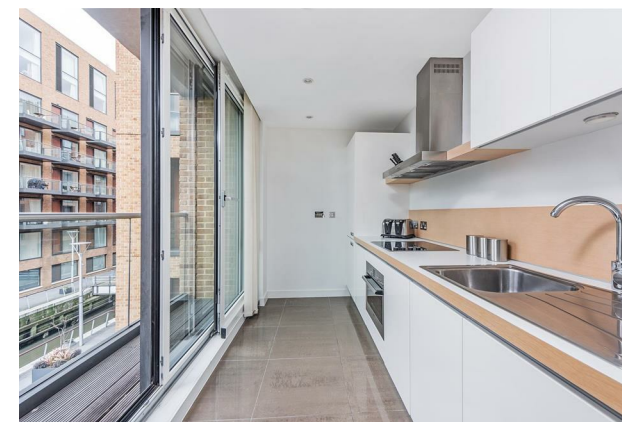
GARTON JONES.COM

8 Gatliff Road
Grosvenor
Waterside
Chelsea
London
SW1W 8DP

Lettings:
+44 (0) 20 7730 5007
gws@gartonjones.com
www.gartonjones.com

A bright and spacious ONE DOUBLE BEDROOM apartment to rent of approx. 658sq.ft (61sq.m) on Grosvenor Waterside, located close to the banks of the River Thames by Chelsea Bridge. This well-presented apartment has an open plan reception room with integrated kitchen and access to a private balcony with dock views. There is a dressing area to the bedroom and wood flooring. Residents have the use of 24-HOUR CONCIERGE, GYM & SPA. On-site Sainsbury's Local, coffee shop and private kids club. SLOANE SQUARE & VICTORIA station with Gatwick Express are within walking distance. Battersea Park is also a short stroll away over Chelsea Bridge.

- 658 Sq.ft (61 Sq.m)
- 1 Double Bedroom
- Open Plan Reception Room
- Modern Integrated Kitchen
- Bathroom
- 24 Hour Concierge
- Balcony With Dock Views
- Residents Suite With Gym & Spa Facilities
- On-Site Sainsbury's, The Locals Coffee Shop & Bakery, Big Horizons Crèche & Purple Dragon Private Kids' Club
- Walking Distance To Sloane Square & Victoria Transport Links & Amenities



Available via Garton Jones' on-site office at Grosvenor Waterside (underneath Bramah House).

*Please note furniture may differ or not be included to that shown in the current photos.

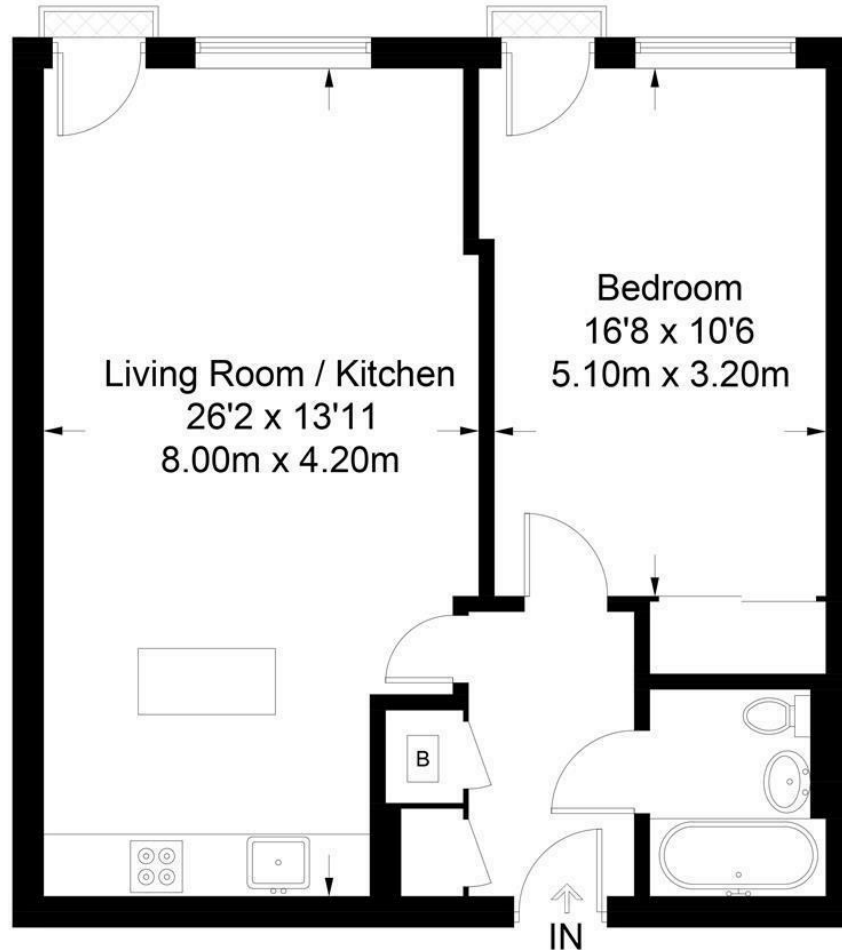
12 month minimum term. 5 week deposit required.

Westminster Council (band E).

EPC Rating: C (75)

Cubitt Building

Approximate Gross Internal Area = 658 sq ft / 61 sq m



Not to scale, for guidance only and must not be relied upon as a statement of fact.
All measurements and areas are approximate only and have been prepared in
accordance with the current edition of the RICS Code of Measuring Practice.

