



Gatliff Close, Chelsea  
London SW1W

GARTON JONES.COM





# Gatliff Close, Chelsea London, SW1W

## £300,000 Leasehold

A studio apartment available to buy of approx. 291 sq.ft (27 sq.m) in a secure and desirable location close the banks of the River Thames. The living/sleeping area has a built-in bed and fitted wardrobes, plus there is a separate kitchen and bathroom. The apartment is situated opposite Chelsea Barracks and is a few minutes' walk to Chelsea Bridge. The many shops, boutiques and shopping facilities on King's Road are just a short walk away from the property. The apartment does require updating and would be an ideal first time purchase or investment property. There is an on-site Sainsbury's Local, a coffee shop, crèche and Purple Dragon private kids' club. The additional amenities and the excellent transport links of both Sloane Square and Victoria Station with link to the Gatwick Express are within walking distance. Battersea Park is also just a short stroll away across Chelsea Bridge.

Available via Garton Jones Chelsea & Belgravia (approx. 2 minute walk away from the property).

Leasehold - 90 years remaining expires July 2113  
Service Charges approx £750.00 per annum TBC  
Ground Rent: £25.00 per annum

Council Tax: Westminster Council (band A). Total: £608.04 per annum 2023-2024.

EPC Rating: E (45)

EPC certificate available on request.

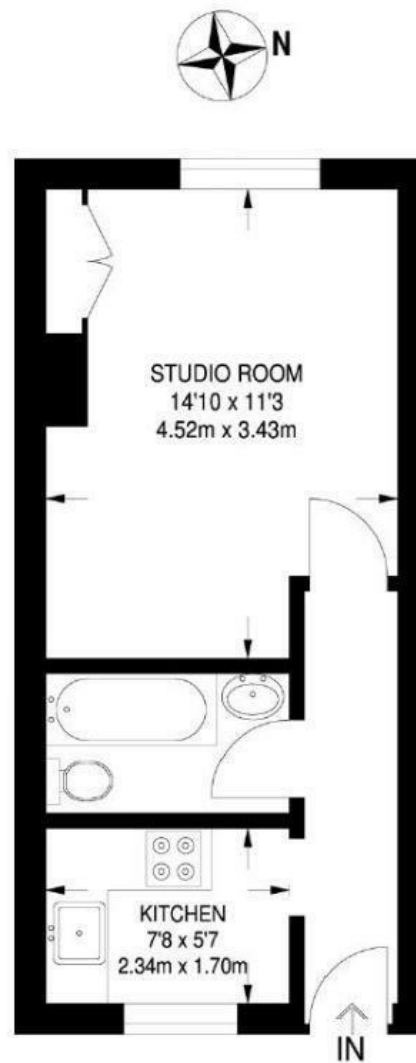
- 291 Sq.ft (27 Sq.ft)
- Studio Apartment
- Open Plan Living
- Separate Kitchen
- Bathroom
- Ideal First Time Purchase Or Investment Property
- Close To Victoria Station & Sloane Square
- Easy Access To The Many Shops, Boutiques & Shopping Facilities On King's Road
- On-Site Sainsbury's Local, Coffee Shop, Crèche & Purple Dragon Private Kids' Club
- Available Via Garton Jones Chelsea & Belgravia (Based On-Site)

# GARTON JONES.COM

8 Gatliff Road  
Grosvenor  
Waterside  
Chelsea  
London  
SW1W 8DP

Sales +44 (0) 20 7730 5007  
gws@gartonjones.com  
www.gartonjones.com





291 SQ FT / 27.0 SQ M



