



Hirst Court, 20 Gatliff Road  
London SW1W

GARTON JONES.COM



Hirst Court, 20 Gatliff Road  
London, SW1W

GARTON JONES.COM

8 Gatliff Road  
Grosvenor  
Waterside  
Chelsea  
London  
SW1W 8DP

Sales +44 (0) 20 7730 5007  
gws@gartonjones.com  
www.gartonjones.com

£675 Per Week

A spacious ONE DOUBLE BEDROOM apartment to rent of approx. 671sq.ft (62.3sq.m). Hirst Court, Grosvenor Waterside.. This FURNISHED apartment has an open plan reception room, with floor to ceiling windows with BALCONY OVERLOOKING THE DOCK. There is a modern kitchen with integrated appliances, good storage including built in wardrobes to the bedroom and a utility cupboard housing a washer dryer. There is an EN-SUITE BATHROOM WITH SERPATE SHOWER plus GUEST CLOAKROOM. 24 HOUR CONCIERGE, GYM & SPA. On-site Sainsbury's Local, coffee shop and private kids club. SLOANE SQUARE & VICTORIA station with Gatwick Express are within walking distance.

- 671sq.ft (62.3sq.m)
- 1 Double Bedroom
- Open Plan Reception Room
- Kitchen with Miele Integrated Appliances
- Dock Facing Balcony
- Bathroom & Guest Cloakroom
- Residents Gym & Spa
- 24 Hour Concierge
- On-Site Sainsburys, Coffee Shop & Bakery, Crèche & Purple dragon Private Kids Club
- Walking Distance to Sloane Square & Victoria



Available via Garton Jones on-site office at Grosvenor Waterside (underneath Bramah House).

Furniture may differ or not be included to that show in current photos.

Council Tax: Westminster City Council (band).

EPC Rating: C (78)

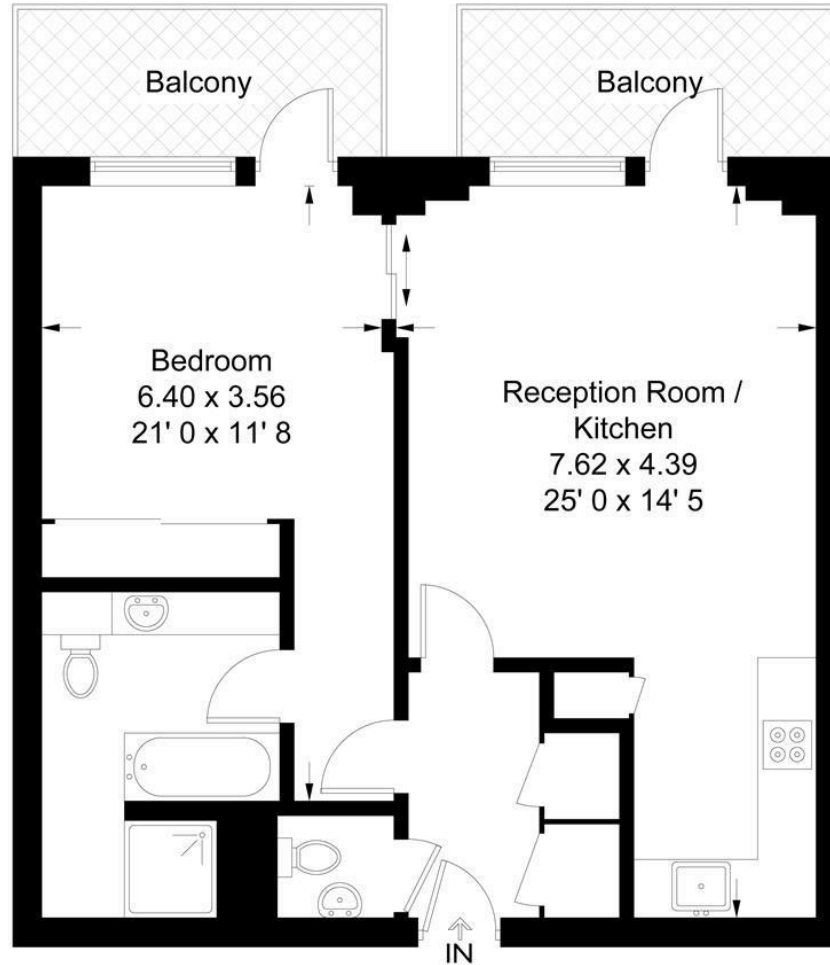
12 month minimum term. 5 week deposit.

EPC certificate available on request.



Hirst Court

Approximate Gross Internal Area = 671 sq ft / 62.3 sq m



Not to scale, for guidance only and must not be relied upon as a statement of fact  
All measurements and areas are approximate only and have been prepared in  
accordance with the current edition of the RICS Code of Measuring Practice

