



Hepworth Court, 30 Gatliff Road
London SW1W

GARTON JONES.COM

Hepworth Court, 30 Gatliff Road London, SW1W

GARTON JONES.COM

8 Gatliff Road
Grosvenor
Waterside
Chelsea
London
SW1W 8DP

Sales +44 (0) 20 7730 5007
gws@gartonjones.com
www.gartonjones.com

£1,380,000 Leasehold

A 2 DOUBLE BEDROOM apartment for sale of approx. 915 sq.ft (85 sq.m) in Hepworth Court, part of the popular Grosvenor Waterside development in Chelsea that surrounds the historic Grosvenor Dock. This bright apartment has an open plan reception room with a modern integrated kitchen and access to PRIVATE BALCONY and two bathrooms (1 en-suite). There is good storage including built-in wardrobes to the master bedroom. The apartment has newly restored wood flooring and has been recently repainted. There is comfort cooling and a SECURE UNDERGROUND PARKING SPACE. 24 HOUR CONCIERGE, GYM & SPA. On-site Sainsbury's Local, coffee shop and private kids club. SLOANE SQUARE & Victoria Station (with Gatwick Express links) are within walking distance. Battersea Park is also just a short stroll away across Chelsea Bridge.

Available via Garton Jones' on-site office at Grosvenor Waterside (underneath Bramah House).

Leasehold: 999 years from January 2003
Service Charges: approx. £8,400.00 per annum
Ground Rent: approx. £1,800.00 per annum
EWS1 Complete

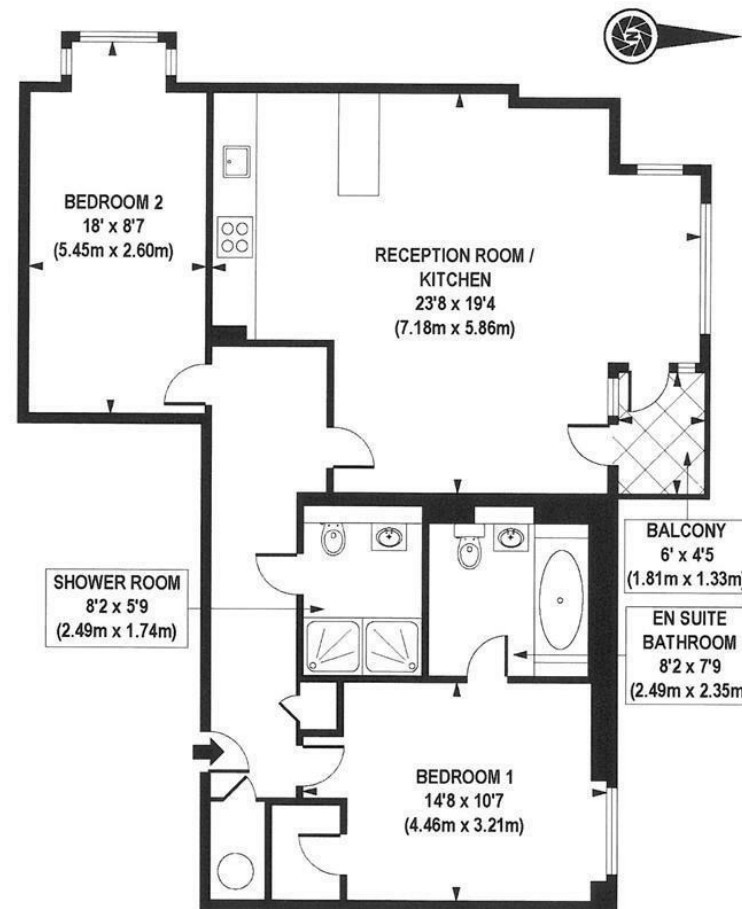
Westminster City Council (band F)

EPC Rating: C (70)

- 915 Sq.ft (85 Sq.m)
- 2 Double Bedrooms
- Open Plan Reception Room
- Modern Integrated Kitchen
- 2 Bathrooms
- 24 Hour Concierge
- Private Balcony
- Residents Leisure Suite With Gym & Spa Facilities
- On-Site Sainsbury's, Private Kids Club And Crèche
- Walking Distance To Sloane Square & Victoria Station



EPC certificate available on request.



APPROXIMATE GROSS INTERNAL AREA 915 sq. ft / 85.06 sq. m

