



Bramah House, 9 Gatliff Road  
London SW1W

GARTON JONES.COM



Bramah House, 9 Gatliff Road  
London, SW1W

GARTON JONES.COM

8 Gatliff Road  
Grosvenor  
Waterside  
Chelsea  
London  
SW1W 8DP

Sales +44 (0) 20 7730 5007  
gws@gartonjones.com  
www.gartonjones.com

£1,050 Per Week

A furnished THREE BEDROOM apartment available to rent of approx. 884 sq.ft (82.1 sq.m) in Bramah House, Grosvenor Waterside development in Chelsea that surrounds the historic Grosvenor dock. This well-presented property benefits from an OPEN PLAN RECEPTION ROOM with an integrated kitchen 3 bedrooms. Two doubles and one single (currently used as a study). Two bathrooms (1 en-suite), a utility cupboard, wood flooring and a SECURE UNDERGROUND PARKING SPACE.

Available via Garton Jones' on-site office at Grosvenor Waterside (underneath Bramah House).

Residents have the use of 24-HOUR CONCIERGE, GYM & SPA. On-site Sainsbury's Local, coffee shop and private kids club. SLOANE SQUARE & VICTORIA station with Gatwick Express are within walking distance.

Council Tax: Westminster Council (band G)

EPC Rating: B (82)

12 month minimum term. 6 week deposit required.

EPC certificate available on request.

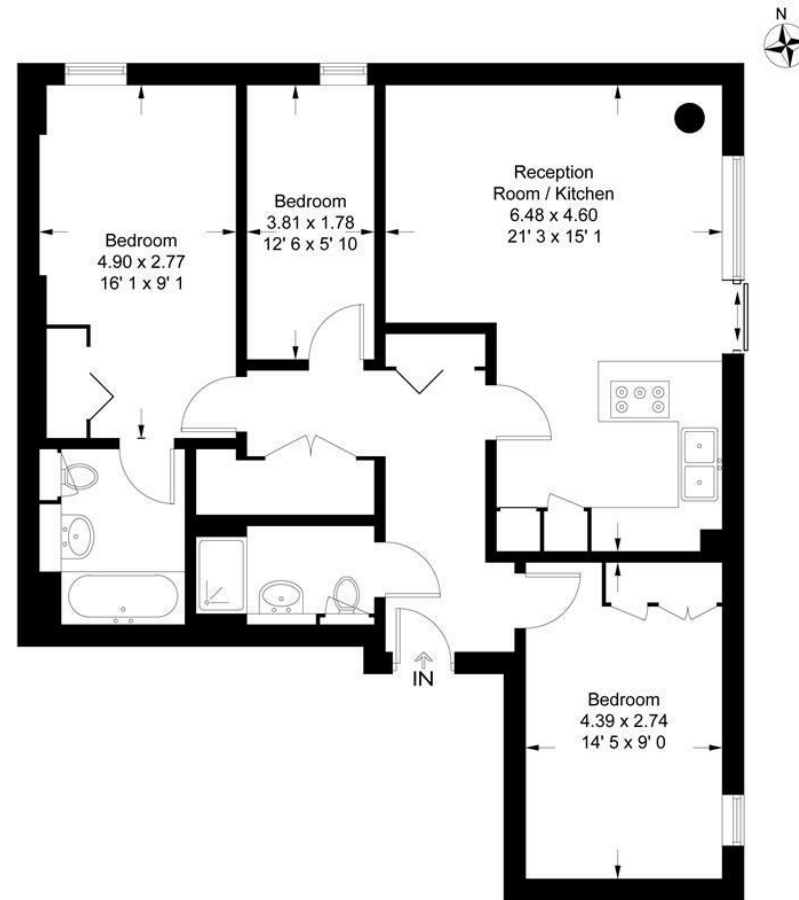
- 884 Sq.ft (82.1 Sq.m)
- Three Bedroom Apartment
- Open Plan Reception Room
- Two Bathrooms (1 En-Suite)
- Secure Underground Parking Space
- 24 Hour Concierge Service
- Wood Flooring
- On-Site Residents' Gym & Spa Facilities
- On-Site Purple Dragon Private Kids Club, Creche, Coffee Shop & Sainsbury's Local
- Within Walking Distance Of Sloane Square & Victoria Station



**Bramah House**

Approximate Gross Internal Area = 884 sq ft / 82.1 sq m

GARTON JONES  
LONDON



This plan is not to scale and must be used as layout guidance only. All measurements and areas are approximate and should not be relied upon to provide accurate information. This plan must not be relied upon when making property valuations, design considerations or any other such relevant decisions. We accept no responsibility or liability (whether in contract, tort or otherwise) in relation to any loss whatsoever arising from or in connection with any use of this plan or the adequacy, accuracy or completeness of it or any information within it.



