



Moore House, 2 Gatliff Road  
London SW1W

GARTON JONES.COM



# Moore House, 2 Gatliff Road London, SW1W

## £1,500 Per Week

A 3 bedroom apartment to rent of approx. 1160sq.ft (107.8sq.m) in Moore House, one of the buildings forming the popular Grosvenor Waterside development, located close to the banks of the River Thames by Chelsea Bridge. The apartment is available FURNISHED or UNFURNISHED and further benefits from an open plan reception room with a balcony with far reaching views, a smart kitchen with Miele integrated appliances including a wine cooler, wood flooring, air conditioning, en-suite bathroom plus a separate shower room, excellent storage including a utility cupboard housing a Bosch washer dryer and built in wardrobes to the master bedroom. There is secure underground parking and as a resident you will also benefit from a 24 hour concierge service, a smart leisure suite with gym and spa facilities, there is an on-site Sainsbury's, a coffee shop & bakery, crèche and a Purple Dragon private kids club. You will be within walking distance to the amenities and transport links of both Sloane Square and Victoria including the Gatwick Express rail connection.

Available via Garton Jones (on-site underneath Bramah House).

Please note the furniture may differ or not be included to that shown in current photos.

Council Tax: Westminster Council (band). Total: per annum 2023/2024.

6 week deposit required. 12 month minimum term.

Commencement of the removal of scaffolding August 2023 and scaffolding estimated to be fully removed by end of December 2023.

EPC rating: C

EPC certificate available on request.

## GARTON JONES.COM

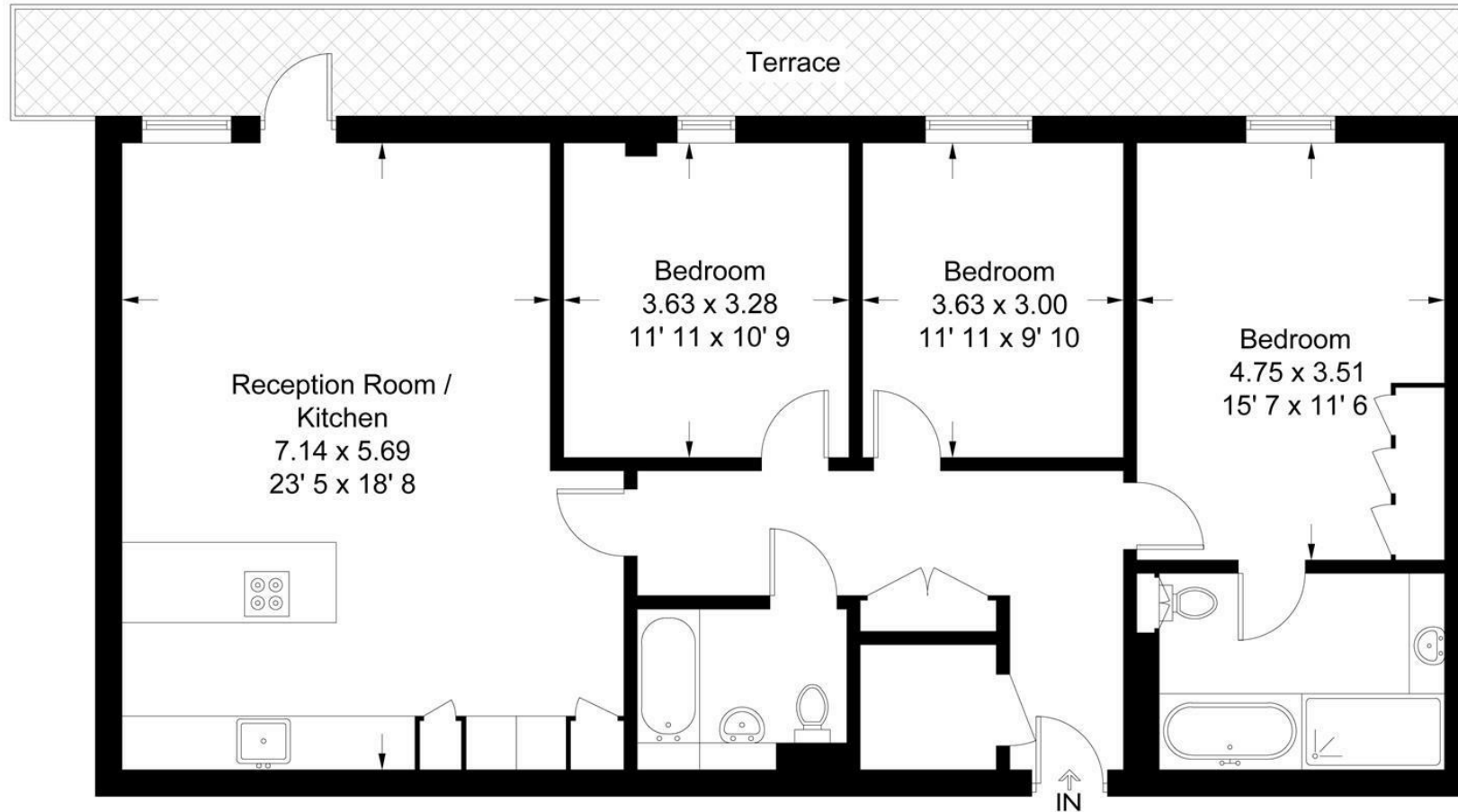
8 Gatliff Road  
Grosvenor  
Waterside  
Chelsea  
London  
SW1W 8DP

Sales +44 (0) 20 7730 5007  
gws@gartonjones.com  
www.gartonjones.com



### Moore House

Approximate Gross Internal Area = 1160 sq ft / 107.8 sq m



Not to scale, for guidance only and must not be relied upon as a statement of fact  
All measurements and areas are approximate only and have been prepared in accordance with the current edition of the RICS Code of Measuring Practice

