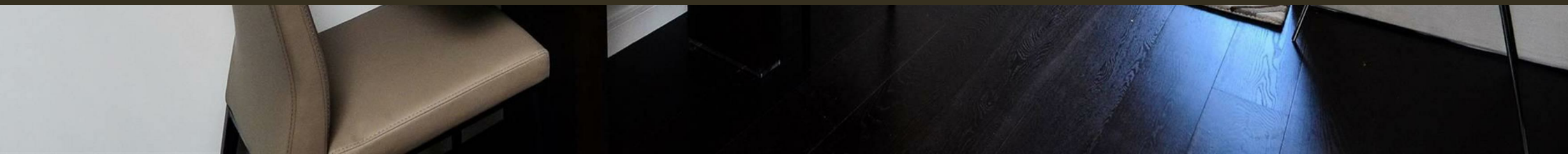




Moore House, 2 Gatliff Road  
London SW1W

GARTON JONES.COM



# Moore House, 2 Gatliff Road London, SW1W

## £375,000 Leasehold

## GARTON JONES.COM

8 Gatliff Road  
Grosvenor  
Waterside  
Chelsea  
London  
SW1W 8DP

Sales +44 (0) 20 7730 5007  
gws@gartonjones.com  
www.gartonjones.com

A studio apartment for sale of approx. 271 sq.ft (26 sq.m) in Moore House, one of the buildings forming the popular Grosvenor Waterside development in Chelsea. There is an open plan reception room, a fitted kitchen, luxury bathroom and wood flooring with underfloor heating. Residents will have the use of a 24 hour concierge service, a leisure suite with a well-equipped gym and spa facilities. This would make an ideal investment and there is a current tenancy until September 2024. There is also an on-site Sainsbury's Local, a coffee shop, crèche and Purple Dragon private kids club. The additional amenities including shops, restaurants of both Sloane Square and Victoria with its excellent transport links and Gatwick Express are within walking distance.

- 271 Sq.ft (25.22 Sq.m)
- Fitted Pull Down Double Bed
- Studio Apartment
- Modern Kitchen
- Luxury Bathroom
- 24 Hour Concierge
- Underfloor Heating
- Residents' Gym With Leisure Suite
- On-Site Sainsbury's Local and Coffee Shop
- Moments from Sloane Square and Victoria Station with and Close to Local Shops and Amenities



Service Charges: approx. £2,343.00 per annum  
Ground Rent: approx. £779.43 per annum  
Lease: 999 years from 2003

Available via our office on-site here at Grosvenor Waterside (underneath Bramah House).

Council Tax: Westminster City Council (band D)

EWS1 COMPLETE

EPC Rating: B (81)

EPC certificate available on request.

Approximate Gross Internal Area  
271 sq ft / 25.22 sq m  
Type: 30.1

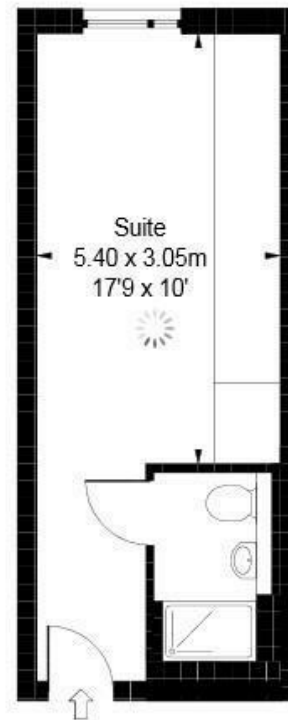


ILLUSTRATION FOR IDENTIFICATION PURPOSES ONLY

ALL MEASUREMENTS ARE MAXIMUM, AND INCLUDE WINDOW BAYS AND WARDROBES WHERE APPLICABLE  
THIS PLAN MUST NOT BE REPRODUCED BY ANY OTHER PERSON WITHOUT PERMISSION



